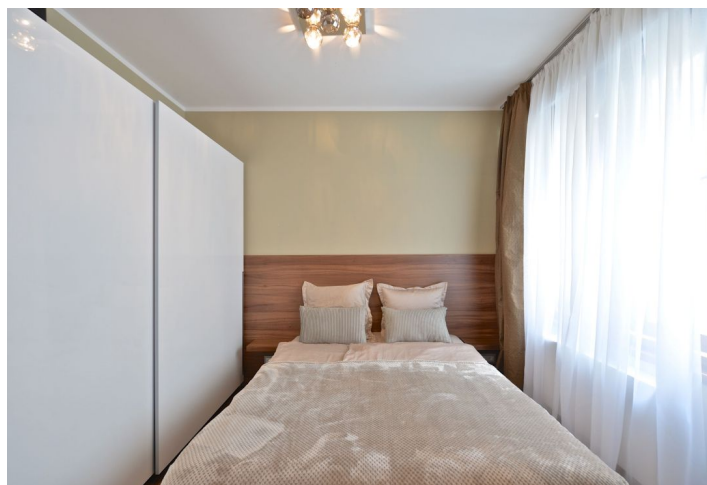
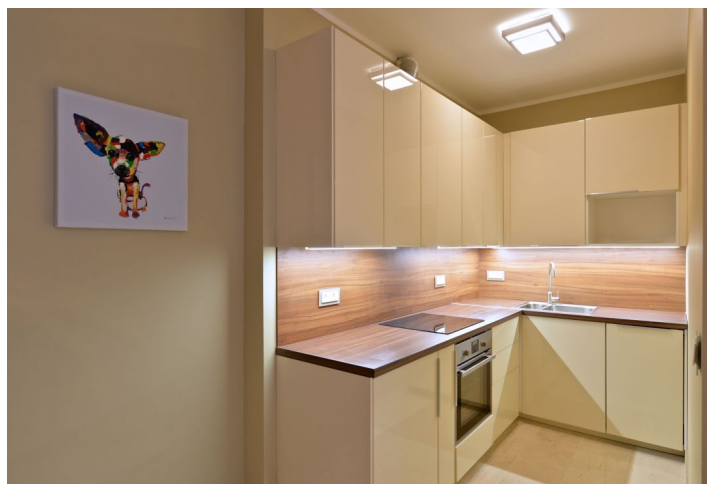




Apartment One-bedroom (2+kk)

Rented

39 m², Prague 1, Nové Město, Příčná





Apartment One-bedroom (2+kk)

Rented

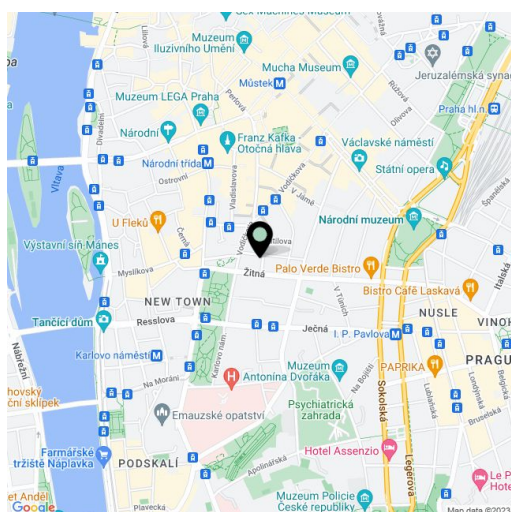
39 m², Prague 1, Nové Město, Příčná

Total area	39 m ²
Parking	-
Cellar	-
PENB	G
Reference number	23293
Available from	Immediately

Benefiting from a central location, this is a high standard fully furnished 1-bedroom flat on the first floor of a completely renovated Functionalist building with lift. Well located near the Novoměstská radnice Town Hall, just a three minute walk from metro and tram stops at Karlovo náměstí Square and seven minutes from Můstek metro station at Wenceslas Square. Full amenities within easy reach, quiet despite the central location.

The interior includes an air-conditioned living room with dining area and a fully fitted and equipped open kitchen, one bedroom separated by sliding doors, bathroom with bathtub and toilet, and entrance hall with storage.

Marble floors, air-conditioning, security entry door, large windows, TV, dishwasher, microwave oven, basic dishes and kitchenware. Deposit for common building charges, water and heating CZK 1900 per month. Electricity is billed separately.



* Area of the unit according to the Civil Code. The area consists of the sum total area of the entire unit bounded by perimeter walls.



Apartment One-bedroom (2+kk)

Rented

39 m², Prague 1, Nové Město, Příčná

