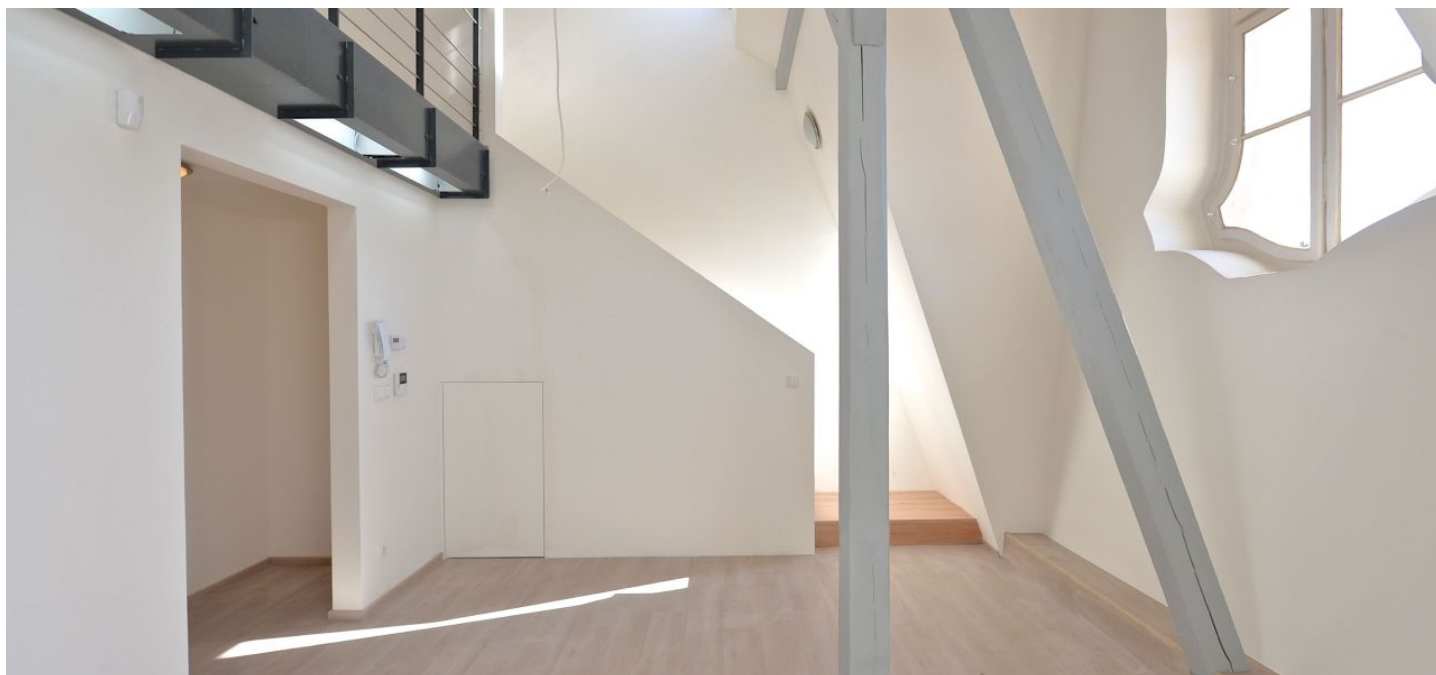




Apartment One-bedroom (2+kk)

Rented

63 m², Prague 4, Nusle, náměstí Bratří Synků





Apartment One-bedroom (2+kk)

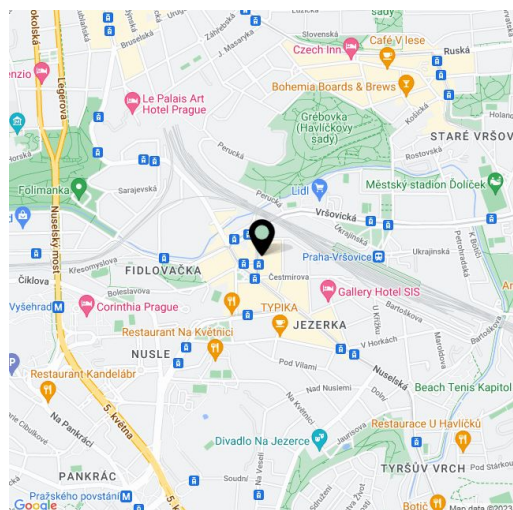
Rented63 m², Prague 4, Nusle, náměstí Bratří Synků

Total area	75 m ²
Floor area*	63 m ²
Terrace	12 m ²
Parking	Parking in the courtyard available.
Cellar	-
PENB	G
Reference number	23297
Available from	Immediately

Brand new fully reconstructed 1-bedroom split-level attic flat with a 12 m² terrace and preserved original details situated on the fourth floor of a renovated residential building with lift. Located in Nusle, Prague 4, on a park-like square with tram stops and quick access to the city center.

The lower level features living room, toilet, and entrance hall. The upper floor includes a spacious open gallery with a fully fitted kitchen, dining area and a study corner, one bedroom with terrace facing the courtyard, and bathroom with bath tub and toilet.

Wooden floors and beams, security entry door, alarm. Courtyard parking available at CZK 1700/space/month. Common building charges and water CZK 1500/month for two persons. Gas and electricity will be transferred to the tenant. Interior: 63 m². Terrace: 12 m².



* Area of the unit according to the Civil Code. The area consists of the sum total area of the entire unit bounded by perimeter walls.

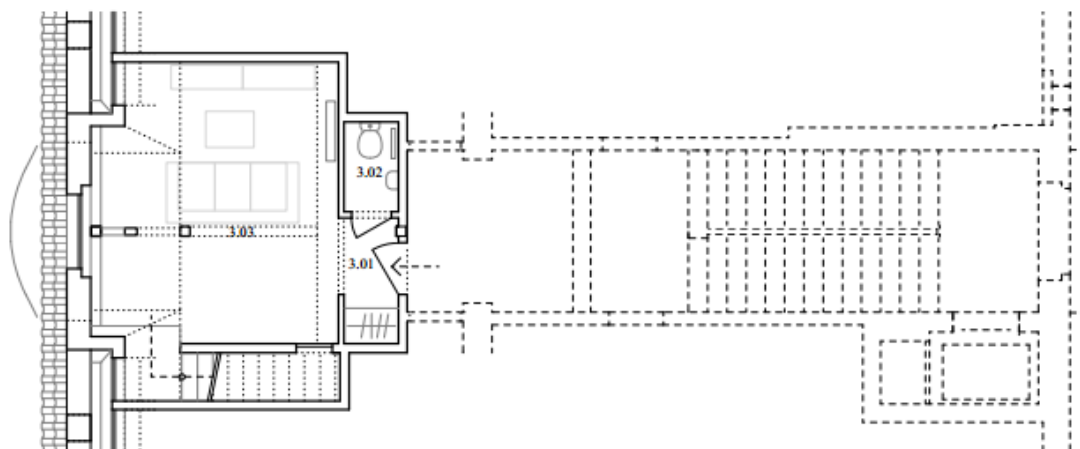


Apartment One-bedroom (2+kk)

Rented

63 m², Prague 4, Nusle, náměstí Bratří Synků

Půdorys 5. NP



Půdorys 6. NP

