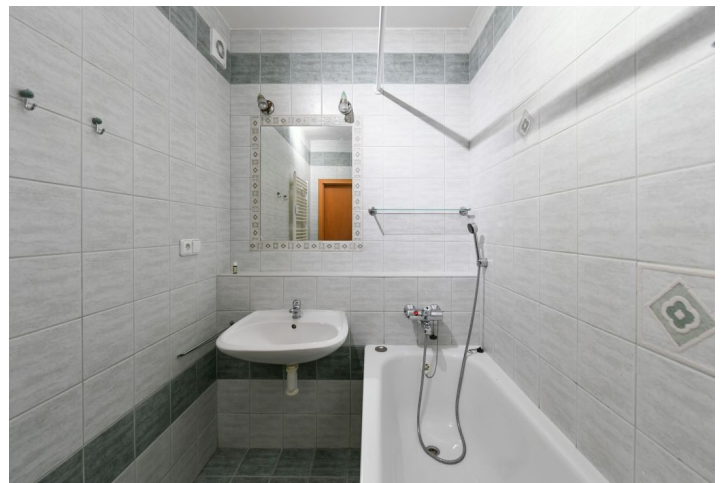




## Apartment Two-bedroom (3+1)

Rented

92 m<sup>2</sup>, Praha 6, Dejvice, Zavadilova





## Apartment Two-bedroom (3+1)

Rented

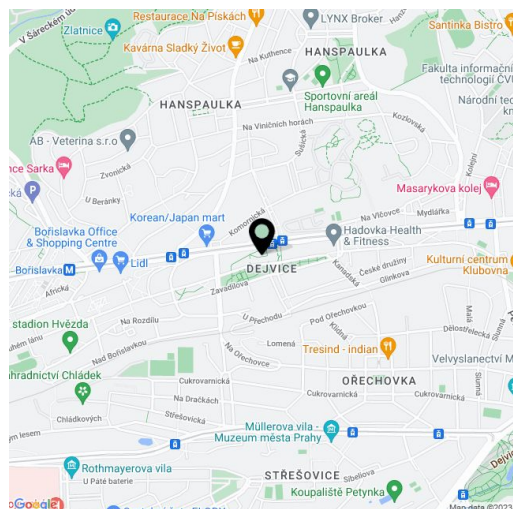
92 m<sup>2</sup>, Praha 6, Dejvice, Zavadilova

Total area	95 m <sup>2</sup>
Floor area*	92 m <sup>2</sup>
Balcony	3 m <sup>2</sup>
Parking	-
Cellar	Yes
Service price	Common building charges CZK 4,500/month for two persons. Electricity is billed separately.
PENB	E
Reference number	23358
Available from	Immediately

This quiet, south-facing, partly furnished apartment with a balcony and stunning views of Hadovka Park is located on the 4th floor of a 1930s apartment building without an elevator in an attractive part of Prague 6 - Dejvice, on the border of the Hanspaulka and Ořechovka neighborhoods. Excellent access to the center. There is a tram stop around the corner with a 3-minute connection to the Dejvická metro station. The building is also within walking distance of the Bořislavka metro station. Next to the building is a market, health center, sauna (rehabilitation, massages).

The apartment has a living room with a balcony, a fully fitted kitchen, 2 bedrooms, a bathroom with a bathtub, a separate toilet, a walk-in closet, a utility room, and an entrance hall.

Floating floors and tiles, **wooden euro-windows**, security entry door, spacious cellar.



\* Area of the unit according to the Civil Code. The area consists of the sum total area of the entire unit bounded by perimeter walls.



## Apartment Two-bedroom (3+1)

Rented

92 m<sup>2</sup>, Praha 6, Dejvice, Zavadilova

