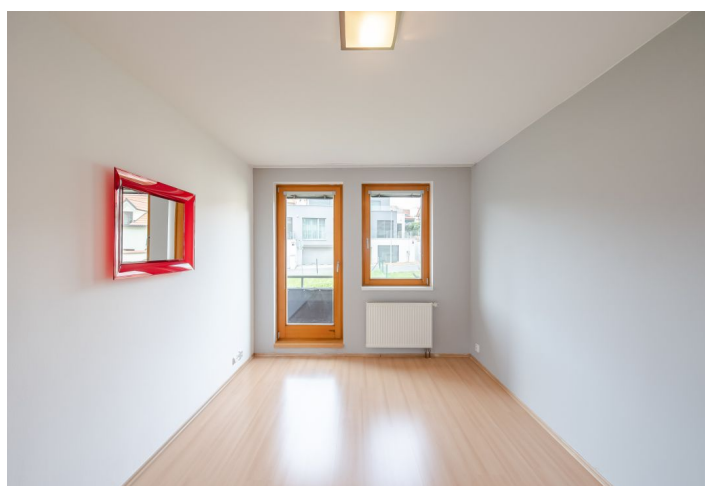
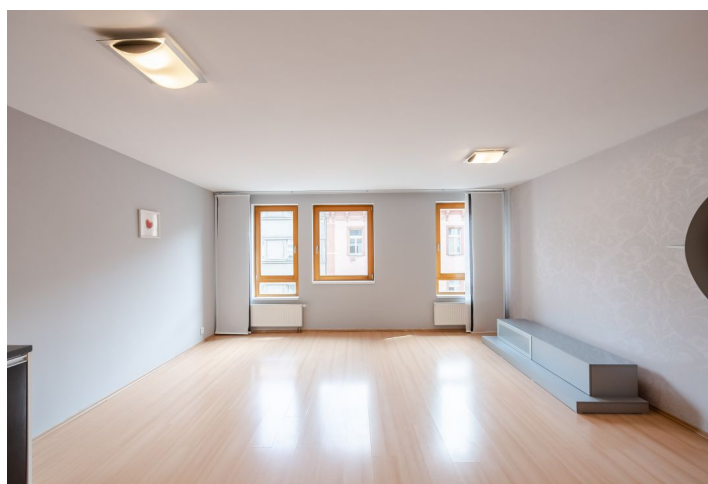




## Apartment Two-bedroom (3+kk)

Rented

89 m<sup>2</sup>, Prague 10, Vršovice, Rostovská





## Apartment Two-bedroom (3+kk)

**Rented**

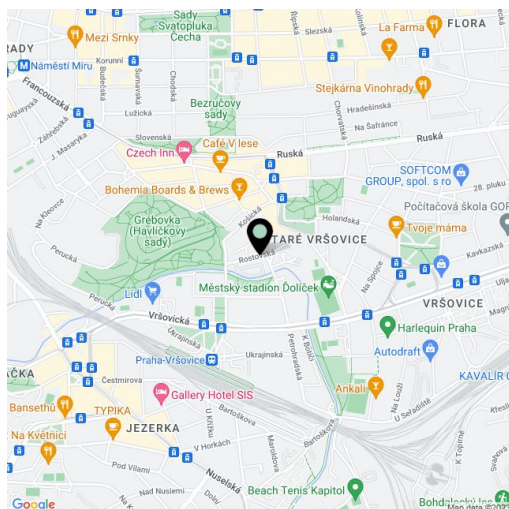
89 m², Prague 10, Vršovice, Rostovská

Total area	94 m²
Floor area*	89 m²
Balcony	5 m²
Parking	Garage parking.
Garage	Yes
Cellar	Yes
PENB	G
Reference number	23369
Available from	Immediately

Contemporary unfurnished 2-bedroom flat with a balcony in the immediate vicinity of the Havlíčkovy Sady Park. Situated on the fifth floor of a residential building from 2004, with lift and underground parking, on the Vinohrady and Vršovice neighborhoods divide. Quiet location just 100 m from the park entrance, with quick access to full amenities and the city center, a few short tram stops to Náměstí Míru metro station.

The interior includes two separate bedrooms with access to a shared balcony facing the green courtyard, living room with a fully fitted open plan kitchen, bathroom with a corner bathtub, toilet, and entrance hall.

Laminated floors, security entry door, built-in wardrobes, dishwasher, audio entry phone, separate energy meters, storage room on the first floor. One garage parking space included. Common building charges and deposit for utilities CZK 4500/month. Electricity CZK 1300/month is billed separately.



\* Area of the unit according to the Civil Code. The area consists of the sum total area of the entire unit bounded by perimeter walls.