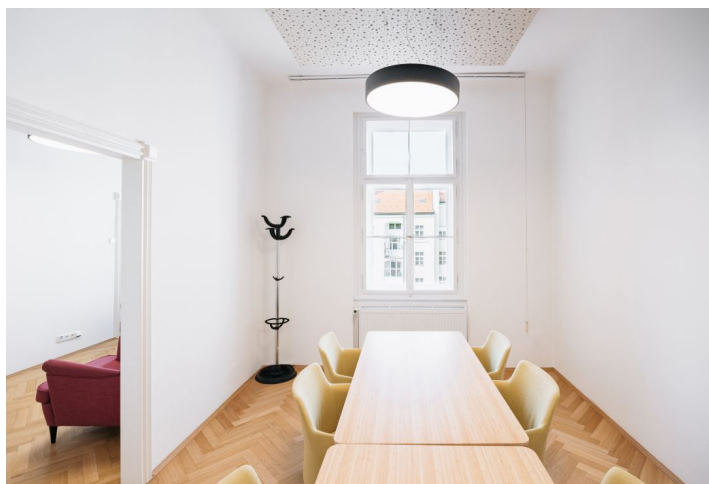


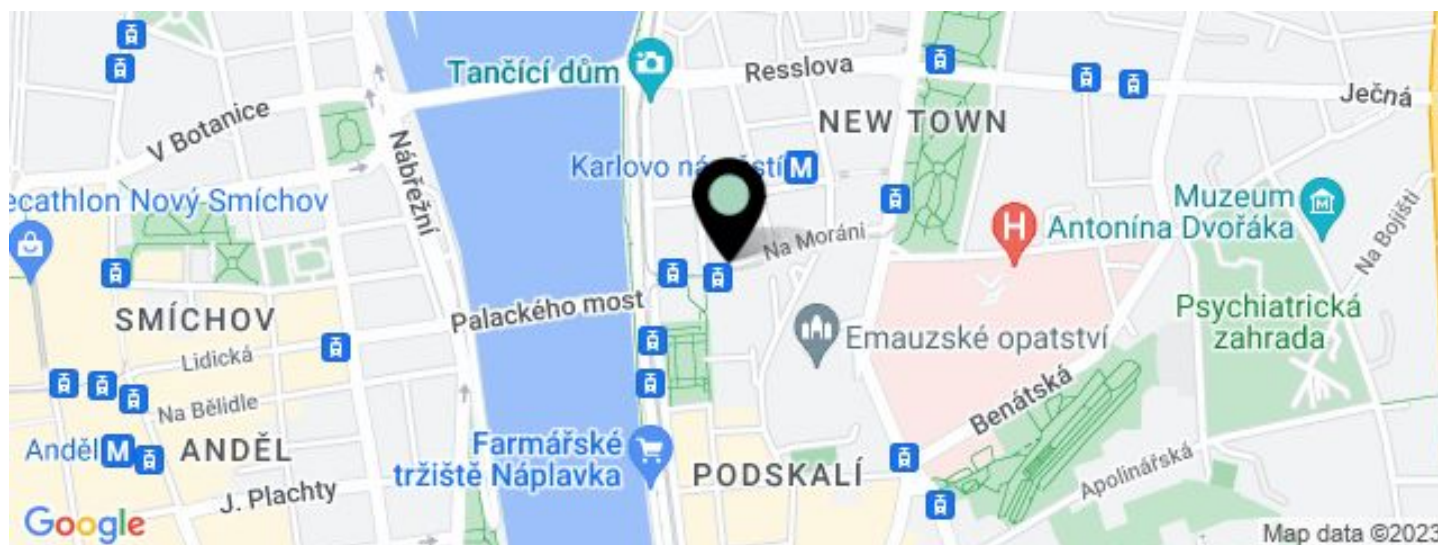


Office building

204 m², Prague 2, Nové Město, Na Moráni

€ 15.09 / m² | CZK 380 / m²



**Office building****€ 15.09 / m² | CZK 380 / m²**204 m², Prague 2, Nové Město, Na Moráni

UNIT	AVAILABLE AREA	SERVICES	PARKING	MONTHLY RENT
Office space, 4th floor + 2 balconies	204 m ²	110 CZK monthly per m ²	Yes	€ 15.09 / m ²

**Office building**204 m², Prague 2, Nové Město, Na Moráni**€ 15.09 / m² | CZK 380 / m²**

Service price	110 CZK monthly per m ²
Total building area	1 020 m ²
Tenant consumption	—
Parking	Parking is available in the surrounding area.
Parking service charges	—
Parking ratio	—
Certification	—
PENB	G
Reference number	23374

Office space for lease in a building located in Prague 2 - Nové Město. It consists of 8 office spaces and 2 balconies with a view of the Vltava River, kitchenette and sanitary facilities. Suitable for law firms, attorneys or notaries. Parking is possible in the vicinity of the building. The owner offers free furniture rental for about half of the rented space.

Location:

The building is situated in the city center, close to Palackého square and on the bank of the Vltava River. Very easily accessible by car and public transport – in close vicinity of Karlovo náměstí metro station (line B) and tram stops. All amenities available nearby.

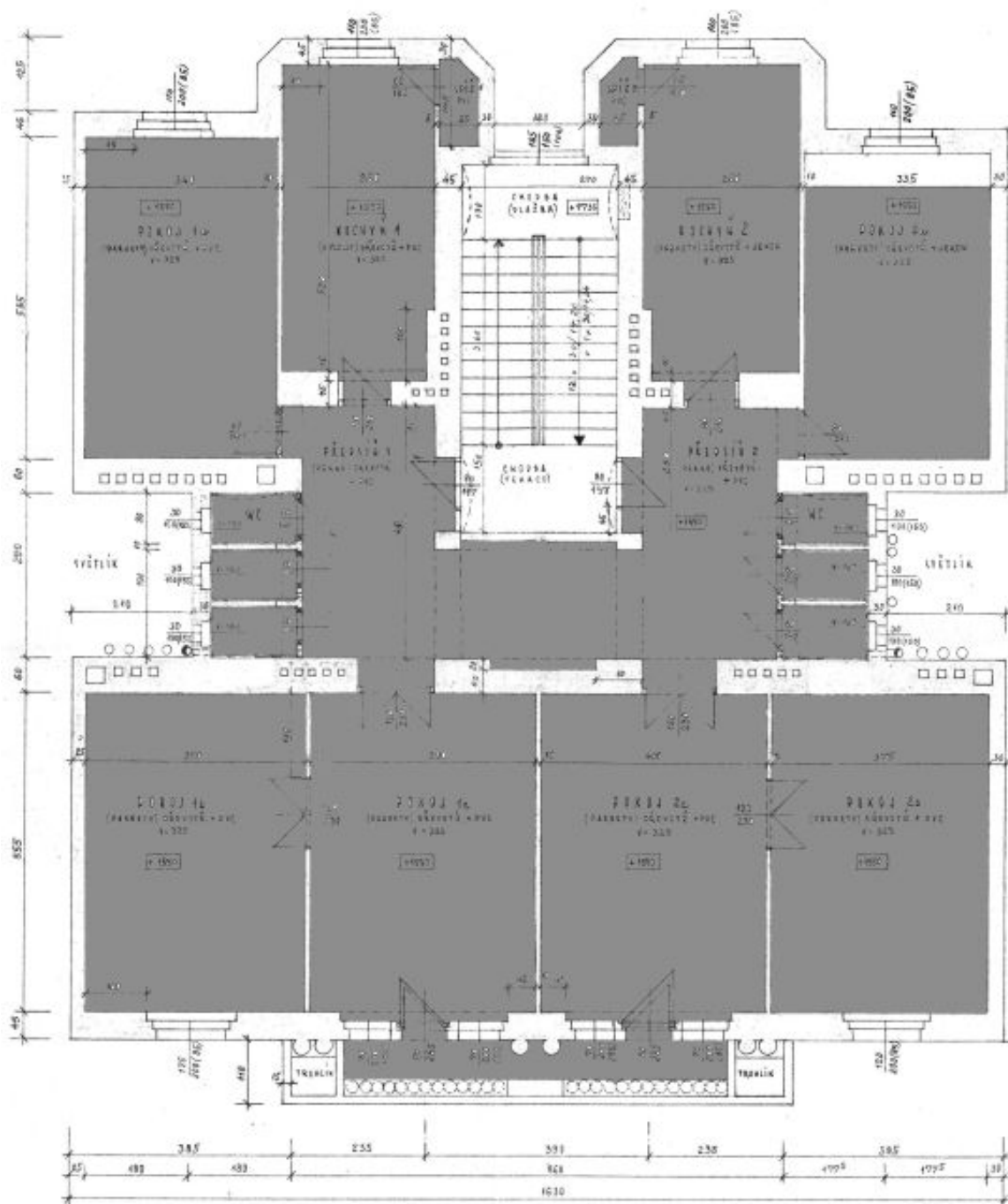
Features and Services:

- Optical cables
- Openable windows
- Oak parquet
- Kitchenette and sanitary facilities included in the premises
- Access cards
- Elevator
- Parking
- Security entrance door
- Central security
- CCTV system
- Air Conditioning
- 2 balconies

Rental and service charges listed without VAT. Lessee pays no commission.



PŮPORYS - IV. PATRO





PŮPORYS - IV. PATRO

