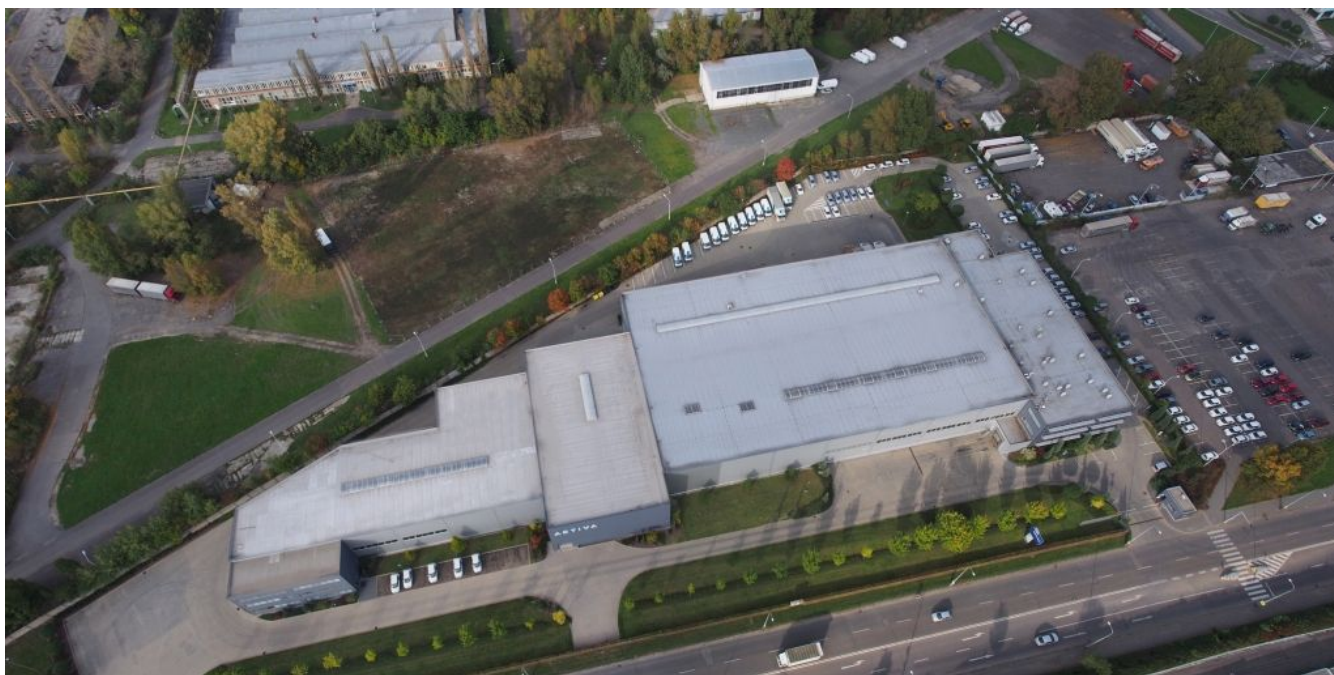




Industrial park

10 200 m², Praha 9, Letňany

Ask for price





Industrial park

10 200 m², Praha 9, Letňany

Ask for price

Total area	10 200 m ²
Ceiling height	10 m
Floor loading capacity	5 t/m ²
Column grid structure	—
Structure	Reinforced concrete structure
PENB	G
Reference number	23383

The industrial park offers warehouse, industrial and office premises for lease located 10 minutes from the city center (from Prague). Construction of this park commenced in 2008 and the project consists only of one building.

Location:

The Park is situated in Prague 9 – Letňany, 10 minutes from Prague (from the city center). Good connection by car and public transport – nearby to the D8, the D11 highways and to the Prague ring road, close to the Letňany metro station (line C).

Features and Services:

- Flexible units (Storage / Office / Light Production / Showroom)
- 24/7 entrance security

Industrial premises/ Warehouse:

- min.1 loading dock per 1 000 sq.m
- Floor loading capacity 5 T/sq.m
- Clear height 10 m
- Column grid structure 24x12 m

Office:

- Turn key office
- Air Conditioning

Rental and service charges listed without VAT. Lessee pays no commission.



Industrial park

10 200 m², Praha 9, Letňany

Ask for price

