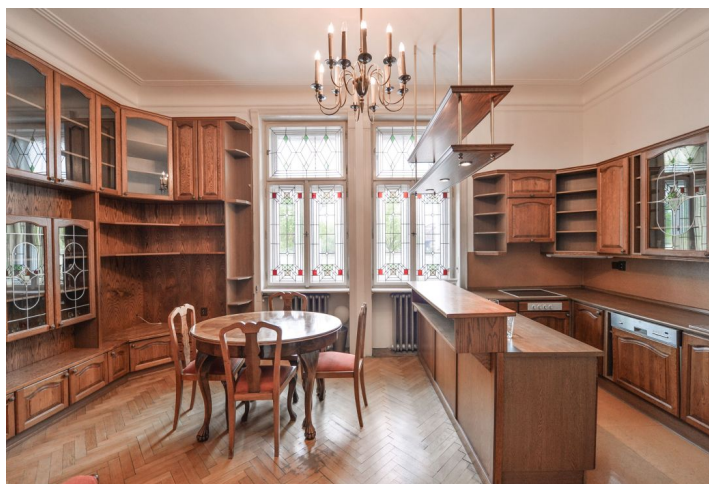




## Apartment Two-bedroom (3+kk)

Rented

100 m<sup>2</sup>, Prague 2, Vyšehrad, Rašínovo nábřeží





## Apartment Two-bedroom (3+kk)

Rented

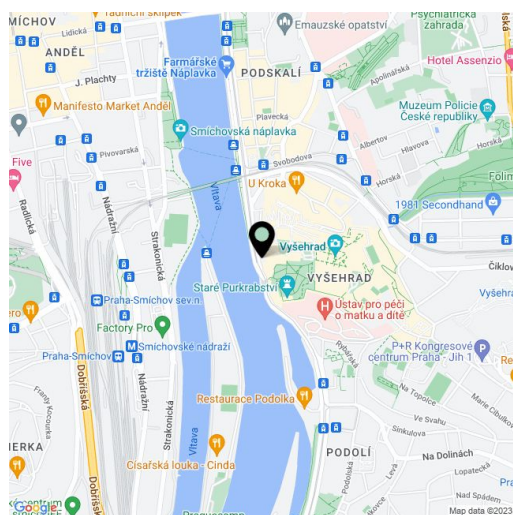
100 m<sup>2</sup>, Prague 2, Vyšehrad, Rašínovo nábřeží

Total area	100 m <sup>2</sup>
Parking	Garage parking can be arranged.
Garage	Yes
Cellar	-
PENB	G
Reference number	23388
Available from	Immediately

Exceptional opportunity for architecture connoisseurs! This partly furnished renovated 1-2-bedroom flat is on the upper ground floor of a lovely Art Nouveau villa with Cubist details, finished in 1913 by a renown Czech architect Emil Králíček. Boasting beautiful well preserved original features, it also enjoys a pleasant shared landscaped garden. Together with several more unique Cubist gems, it is located on the Vltava riverbank, right under the Vyšehrad Castle, with beautiful views of the river panorama.

With lots of built-in wardrobes and storage, the interior includes a fully fitted eat-in kitchen and living room (hall), two bedrooms, full bathroom (bathtub, walk-in shower, sink, bidet, toilet), and entrance hall. The flat could also be used as a comfortable one-bedroom with a large living room.

High ceilings, solid wood parquet floors, dishwasher, microwave oven, alarm. No lift. Good transportation connections, quick access to the city center. Common building charges, water and heating CZK 4000/month. Electricity will be transferred to the tenant.



\* Area of the unit according to the Civil Code. The area consists of the sum total area of the entire unit bounded by perimeter walls.



## Apartment Two-bedroom (3+kk)

100 m<sup>2</sup>, Prague 2, Vyšehrad, Rašínovo nábřeží

**Rented**

