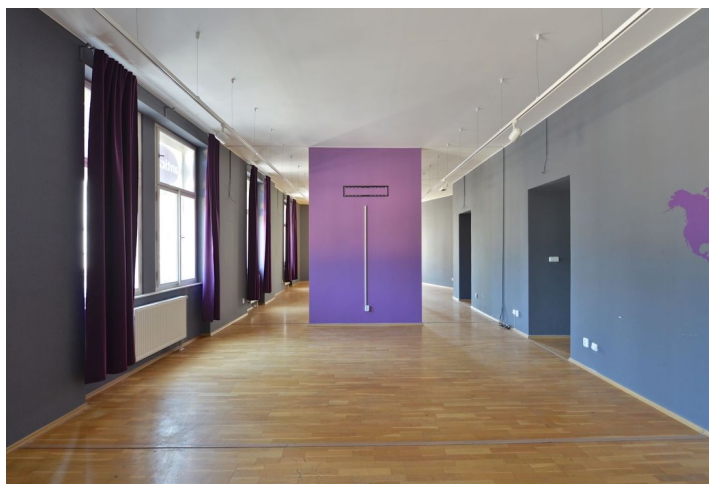




# Office building

Prague 2, Vyšehrad, Svobodova

Rented





## Office building

Prague 2, Vyšehrad, Svobodova

**Rented**

Service price	15 CZK monthly per m <sup>2</sup>
Total building area	713 m <sup>2</sup>
Tenant consumption	—
Parking	-
Parking service charges	—
Parking ratio	—
Certification	—
PENB	G
Reference number	23626

This building with office premises for lease is situated in a popular part of Prague 2 – Vyšehrad, close to the Vltava River.

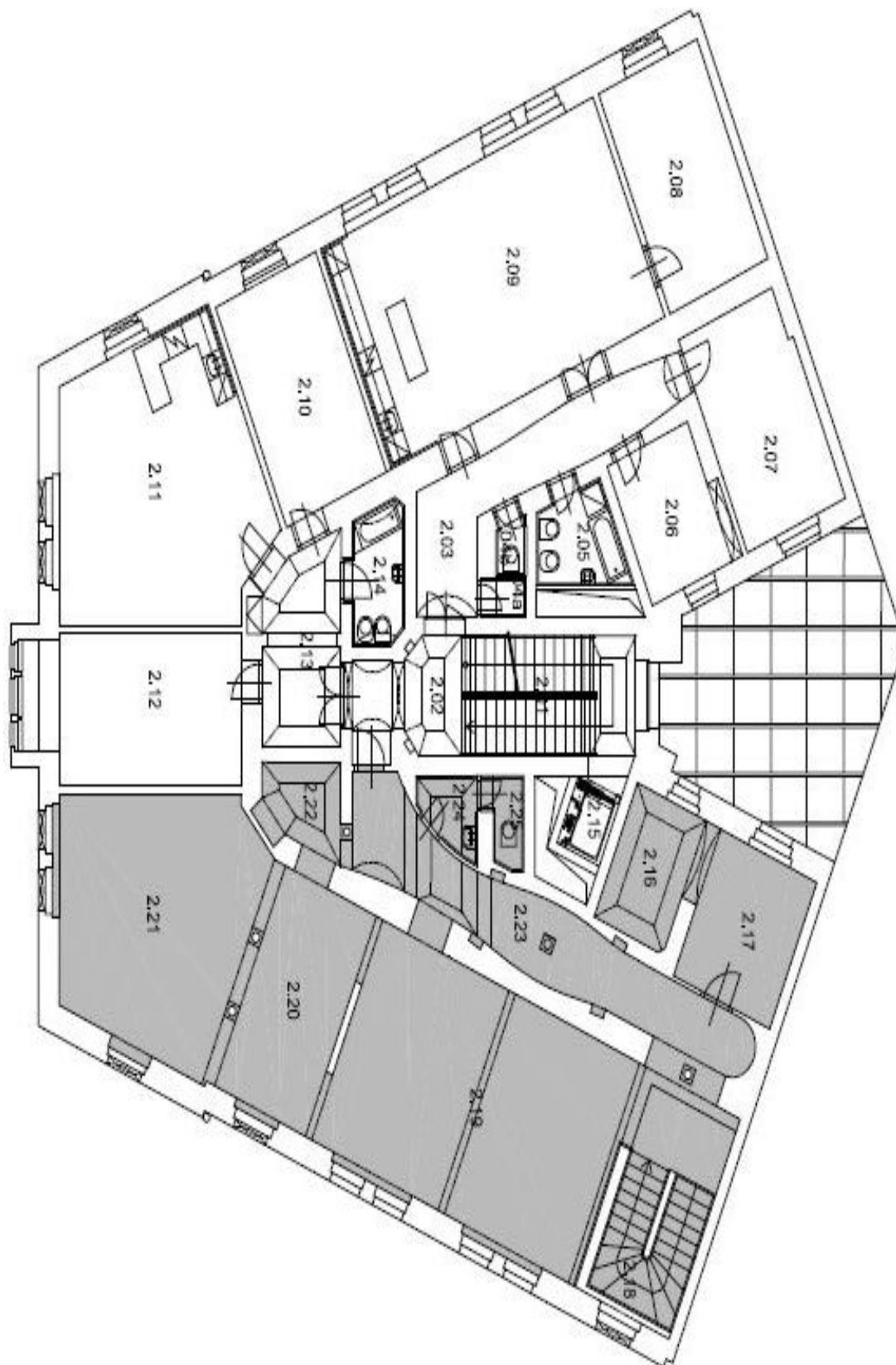
### Location:

The building is located in close vicinity of Rašínovo nábřeží and Vyšehrad. Excellent accessibility by car and public transport – tram and bus stops nearby, Karlovo náměstí metro station (line B) approx. 10 minutes on foot. In close vicinity of the Charles University Botanic Garden and Folimanka Park. All amenities nearby.

### Features and Services:

Office premises suitable for open space on the 1st floor of the building. Two entrances to the premises – from the hall of the building and also directly from the street. Available kitchenette and toilets, openable windows and parquet floors.

Rental price **CZK 202/m<sup>2</sup>/month**. Rental and service charges listed without VAT. Lessee pays no commission.



1. PATRO