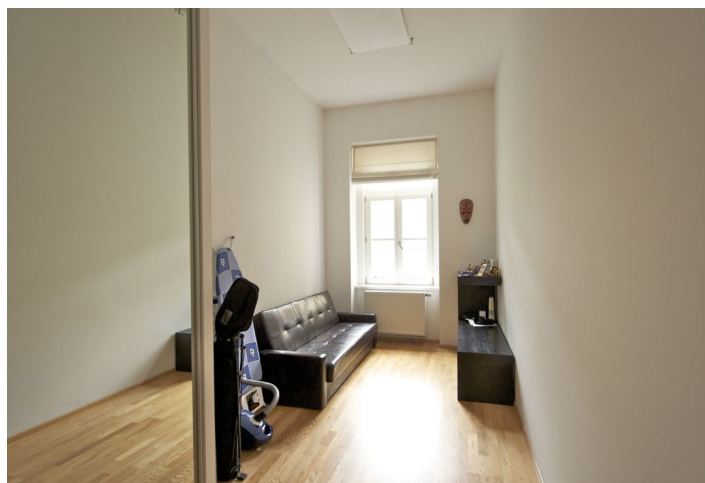




Apartment Two-bedroom (3+kk)

Rented

101 m², Prague 2, Nové Město, Pod Slovany





Apartment Two-bedroom (3+kk)

Rented101 m², Prague 2, Nové Město, Pod Slovany

Total area	101 m ²
Parking	-
Cellar	Yes
PENB	G
Reference number	23698
Available from	Immediately

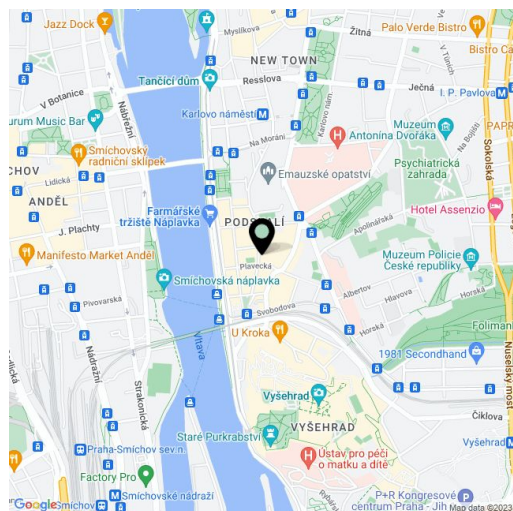
Partially furnished 2-bedroom flat on the 1st floor of a completely renovated Art Deco building on a quiet street close to Palackého Náměstí square, the Emauzy monastery, Charles University Botanical Gardens and the Vltava riverbank, just a few minutes from a metro station and trams. The building boasts a private relaxation center with sauna for the residents.

The apartment consists of a spacious entrance hall with a walk-in closet, bright living room with a fully fitted open-plan kitchen, two bedrooms with built-in wardrobes, bathroom with bathtub, sink, bidet and toilet, and a guest toilet.

Equipped with floating wood floors and tiles, **new casement windows** with electric controlled roller blinds, solid wood replicas of the interior doors, fully fitted kitchen with **Siemens appliances**, including a coffee machine and built-in **Liebherr wine fridge**; suspended ceilings with spotlights, white plaster, and audio entry phone.

Romantic location close to Náplavka, within walking distance of Vyšehrad park and numerous cafes, wine bars and restaurants. Deposit for heating and common building charges CZK 6,000/month. Electricity is billed separately.

Interior 100.8 m³, cellar 3.2 m².



* Area of the unit according to the Civil Code. The area consists of the sum total area of the entire unit bounded by perimeter walls.

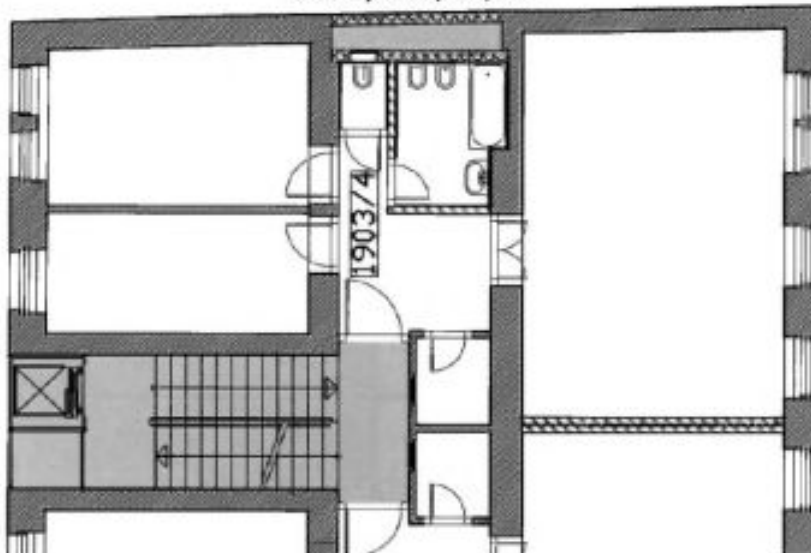


Apartment Two-bedroom (3+kk)

101 m², Prague 2, Nové Město, Pod Slovany

Rented

2 N.P. Byt 3+kk, 100,8 m²



1 P.P. Sklep č. 4 a wellness se saunou

