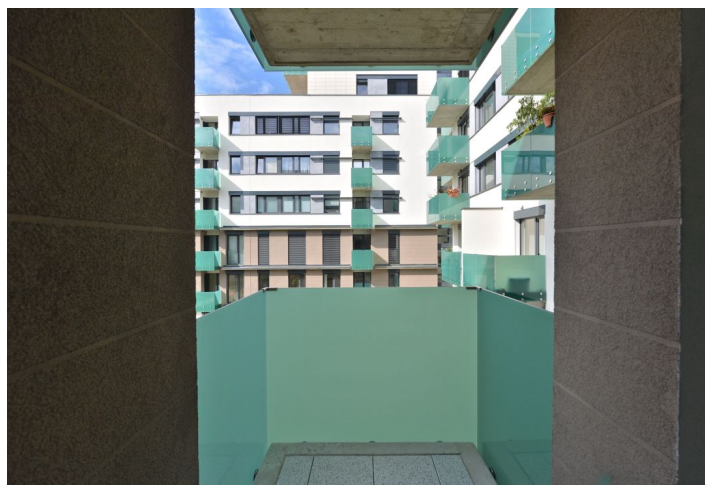
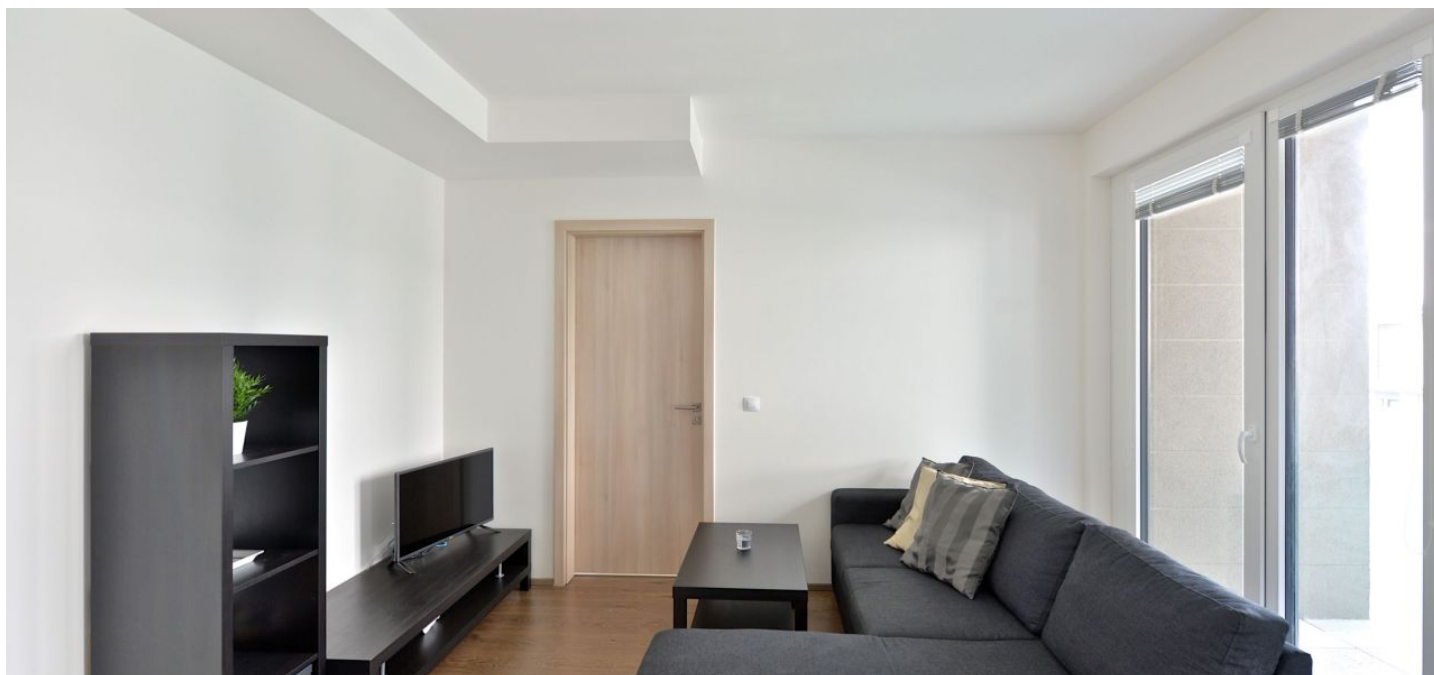




Apartment One-bedroom (2+kk)

Rented

42 m², Praha 5, Stodůlky, Petržilkova





Apartment One-bedroom (2+kk)

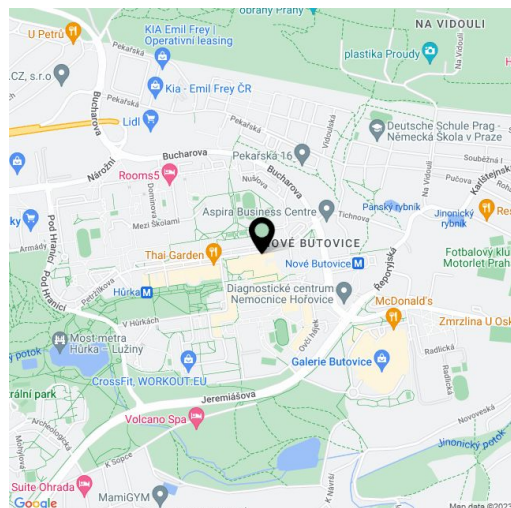
Rented42 m², Praha 5, Stodůlky, Petržilkova

| | |
|------------------|---------------------------------|
| Total area | 45 m ² |
| Floor area* | 42 m ² |
| Balcony | 3 m ² |
| Parking | Parking can be arranged nearby. |
| Cellar | Yes |
| PENB | A |
| Reference number | 23719 |
| Available from | Immediately |

Fully furnished second floor 1-bedroom flat with a balcony facing the courtyard, situated in the new Smart / Clever Living Nové Butovice gated residential project with a green courtyard with benches and a children's playground. Location with quick access to the city center, just a minute walk from Nové Butovice metro station, and with full amenities in the area (Nové Butovice shopping mall, medical center, schools). Convenient to the German School (one short stop by metro), within walking distance of Hůrka Central Park, near the Prokopské Valley.

The interior includes living room with a fully fitted open kitchen and balcony access, one bedroom, bathroom with bathtub and toilet, and entry hall.

Laminated floors, tiles, security entry door, triple glazed plastic windows, blinds, smart home system, washer, dishwasher, microwave oven, TV, Internet, audio entry phone, cellar. Parking can be arranged nearby. Common building charges, water and heating CZK 1500 per month. Electricity will be transferred to the tenant. Available from November 1, 2016.



* Area of the unit according to the Civil Code. The area consists of the sum total area of the entire unit bounded by perimeter walls.