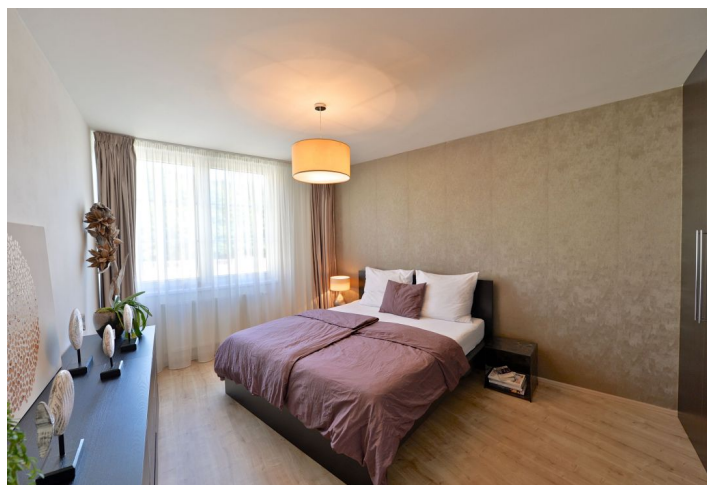




Apartment Two-bedroom (3+kk)

€ 1 393 | CZK 35 000

79 m², Prague 8, Libeň, V zahradách





Apartment Two-bedroom (3+kk)

€ 1 393 | CZK 35 000

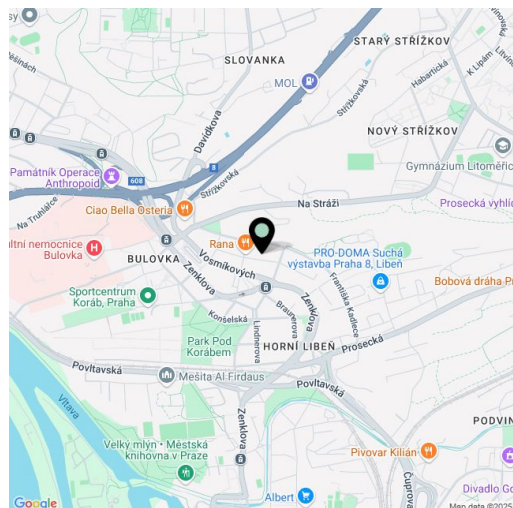
79 m², Prague 8, Libeň, V zahradách

Total area	79 m ²
Parking	Garage parking.
Garage	Yes
Cellar	Yes
Service price	Monthly deposit for services incl. Internet and utilities around CZK 8,000 for 2 persons.
PENB	B
Reference number	23747
Available from	01.03.2025

Tastefully furnished apartment with green views of the Prosecké Skály Rocks, situated on the 4th floor of the Studánka Residence project with underground parking. Located in a quiet street in Prague 8, Libeň, with quick access to the city center and amenities. Tram connections to the metro (nearest station Kobylisy), convenient to the Mladá Boleslav and Hradec Králové highways.

The interior features a living room with a fully fitted open plan kitchen and breakfast bar, two separate bedrooms, a marble bathroom with a walk-in shower, double sink, and toilet, a guest toilet, and an entrance hall.

High-quality materials and equipment, custom-made furniture, laminate floors, large windows, security entry door, built-in wardrobes and storage, blinds, gas boiler, washer, dryer, dishwasher, elevator, 6 m² cellar, bike storage in the building. One large parking space included.



* Area of the unit according to the Civil Code. The area consists of the sum total area of the entire unit bounded by perimeter walls.