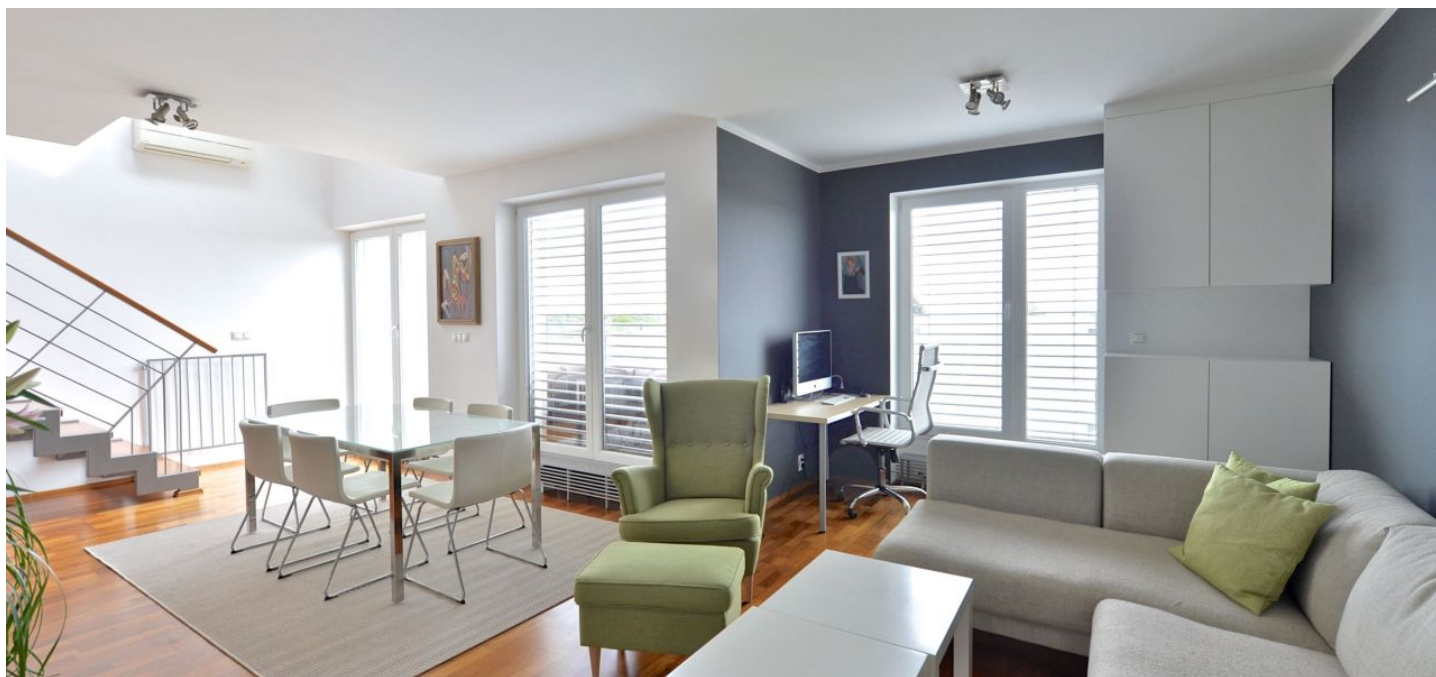




Apartment Two-bedroom (3+kk)

Sold

120 m², Prague 6, Suchdol, Suchdolské náměstí





Apartment Two-bedroom (3+kk)

Sold120 m², Prague 6, Suchdol, Suchdolské náměstí

Total area	129 m ²
Floor area*	120 m ²
Terrace	9 m ²
Parking	1 garage parking space
Garage	Yes
Cellar	Yes
Service price	4 600 CZK monthly
PENB	G
Reference number	23751

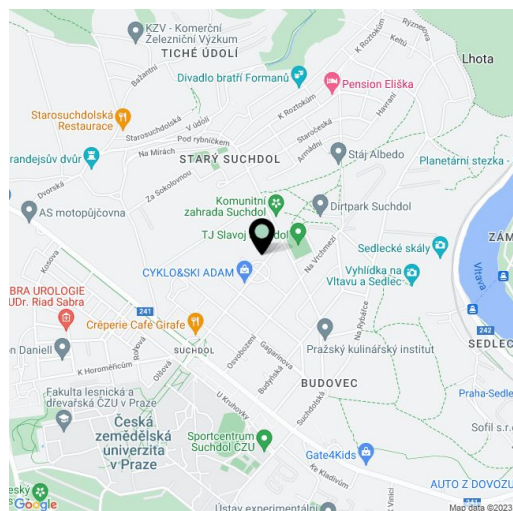
Air-conditioned, south-facing duplex apartment with a terrace overlooking the city skyline and mature greenery, located on the 3rd and 4th floors of a residential building from 2008 with an elevator and underground garage. Pleasant residential location near Tiché údolí valley, with good access to the Metro and the airport.

The lower floor of the apartment consists of a living room with kitchen, dining area and terrace, a separate toilet / laundry room and hallway with built-in wardrobes. The upper floor comprises 2 bedrooms and bathroom with bathtub, shower, toilet and bidet.

Amenities include **air-conditioning, hardwood floors**, ceramic tiles, plastic windows and Velux wooden skylights, a fully equipped kitchen with built-in wine fridge, electric awning on the patio, security entrance door – both for the flat and cellar. The purchase price includes all the furniture shown in the photographs, **1 parking space in the underground garage** and a **cellar**. Possibility to rent additional parking space.

The apartment is located one-minute on foot from a bus stop with an eleven-minute connection to the subway and complete civic amenities in Dejvice. Within easy walking distance of the flat you can find a kindergarten, cafe, restaurant, playground and pharmacy, in the nearby campus is a swimming pool and sports center.

Interior 120 m², 9 m² terrace, cellar.



* Area of the unit according to the Civil Code. The area consists of the sum total area of the entire unit bounded by perimeter walls.