



Apartment building

800 m², Prague 4, Kamýk, Písnická

Ask for price





Apartment building

800 m², Prague 4, Kamýk, Písnická

[Ask for price](#)

Total gross floor area of the building	800 m ²
Total net leasable area of the building	800 m ²
Plot	870 m ²
Foot print	537 m ²
Parking	2x double-garage
Garage	Yes
Cellar	-
PENB	D
Reference number	23766

Semi-detached brick house with six units, two large double garages and private garden with mature greenery, located in a quiet residential area in Kamýk, Prague 4. Full amenities in the immediate vicinity, large park just a few-minutes' walk from the house, and a bus stop with a 10-minute connection to the Kačerov metro station.

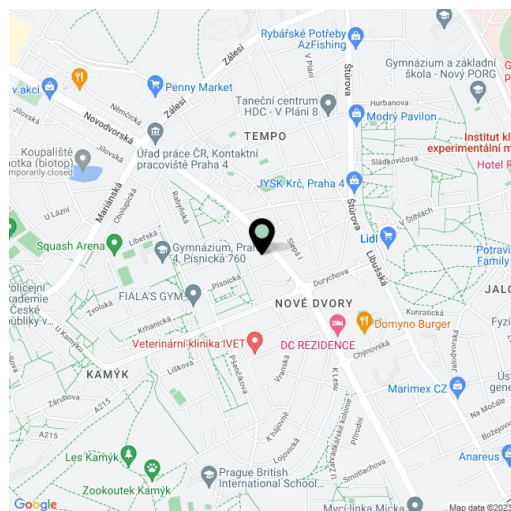
This semi-detached house from 1996 has two separate entrances and two double garages. Both halves have the same layout: 2-bedroom apartment on the ground floor, 2-bedroom apartment on the 1st floor and 4-bedroom duplex on the 2nd and 3rd floors. Each floor has a kitchen, bathroom and separate toilet. One of the most attractive features of the property are the **south-facing terraces that provide pleasant green views.**

Equipped with **oak parquet flooring** (currently covered with heavy-duty carpet), plastic windows and wooden Velux skylights, veneered doors with metal frames, computer wiring in every room, alarm and individual Vaillant gas boiler, water tank, gas and electricity meters for each half.

Within walking distance of the property you can find several kindergartens and schools, a gymnasium, health center, supermarket, playgrounds and a squash hall. **The Prague British School**, a most prestigious educational establishment, is only a few-minutes' drive from the house. Future metro station Nové dvory (line D) within walking distance.

The house is available from July 2017.

Interior 800 m², built-up area 537 m², garden 333 m², plot 870 m².

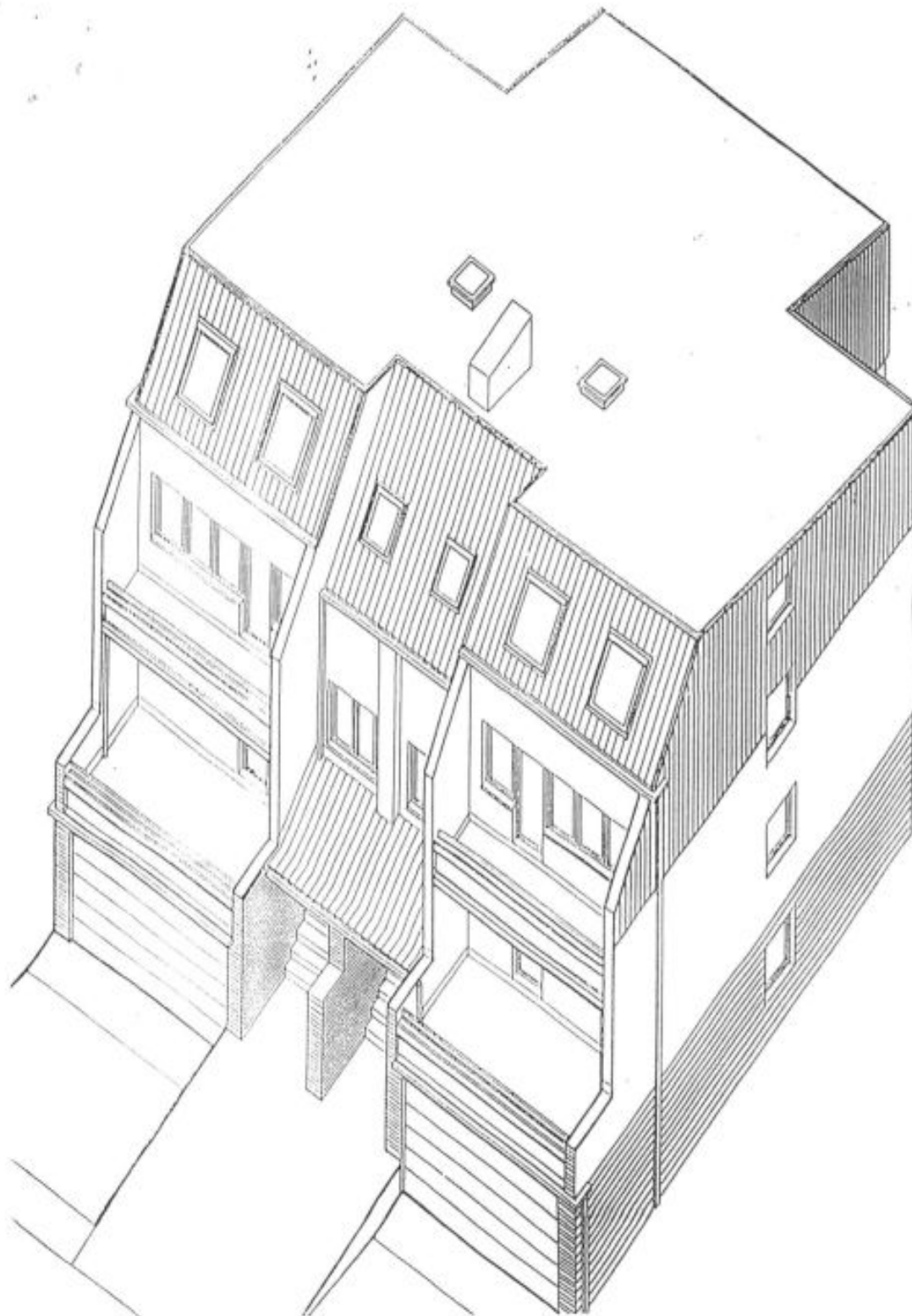




Apartment building

800 m², Prague 4, Kamýk, Písnická

Ask for price

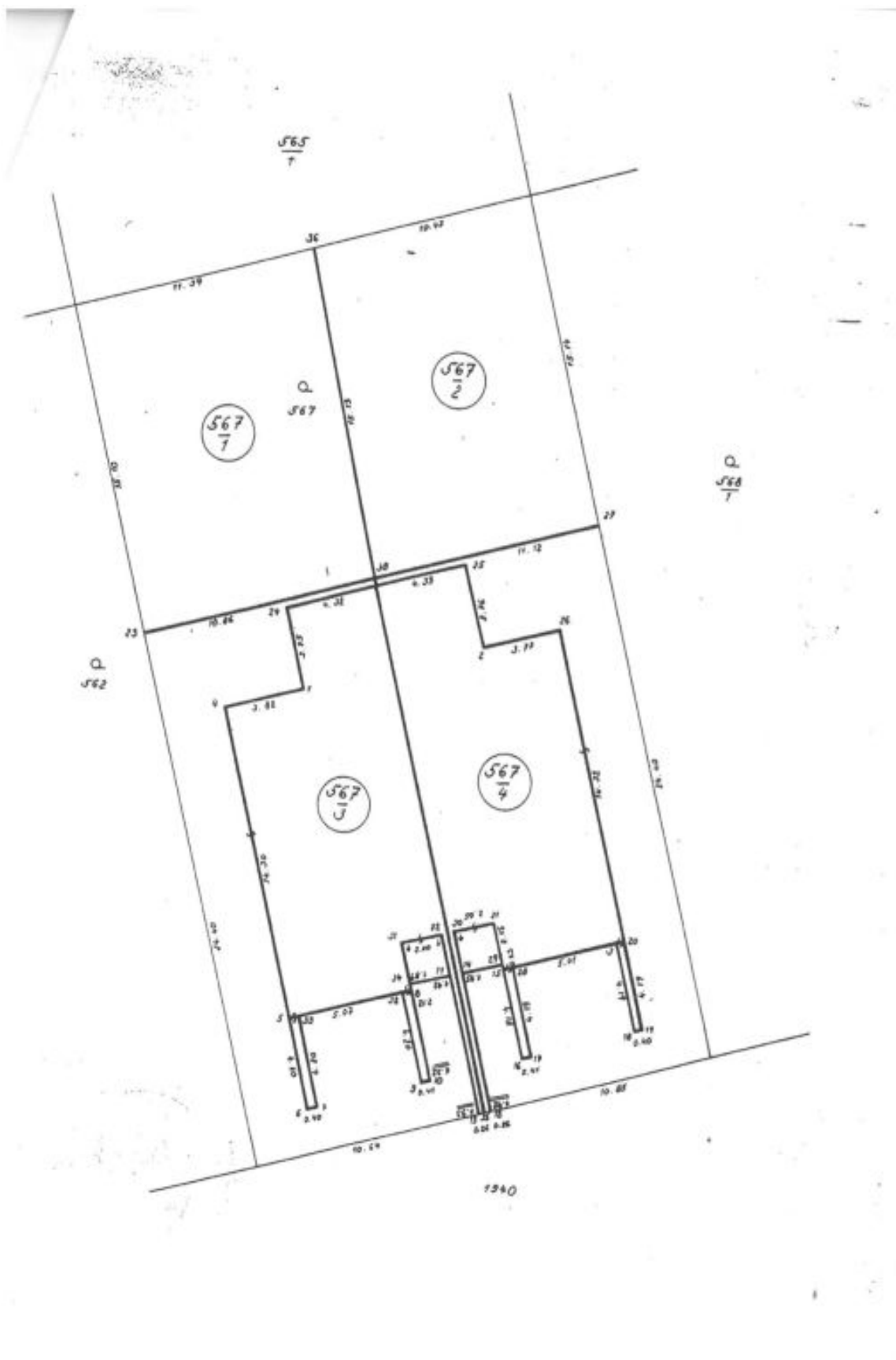




Apartment building

800 m², Prague 4, Kamýk, Písnická

Ask for price





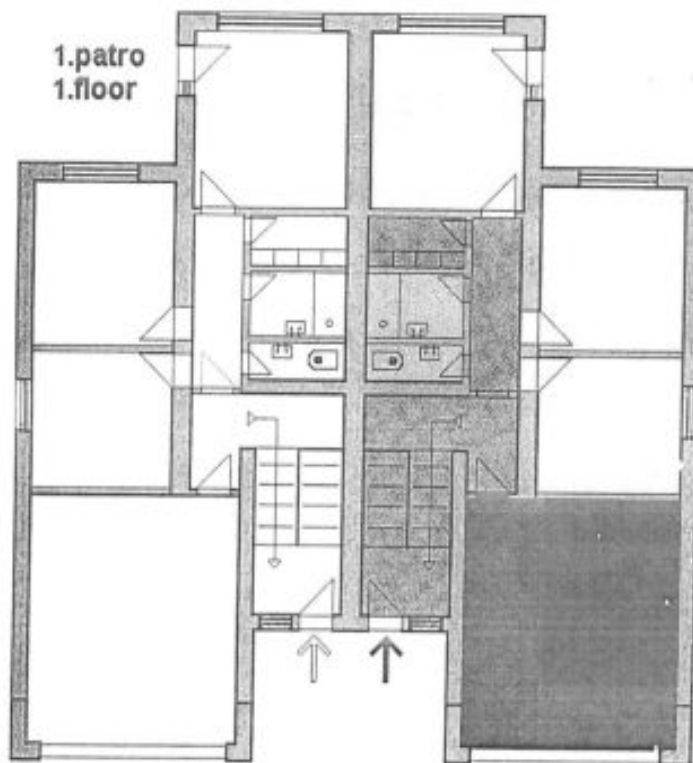
Apartment building

800 m², Prague 4, Kamýk, Písnická

Ask for price

1.patro

Stránka č. 1 z 1





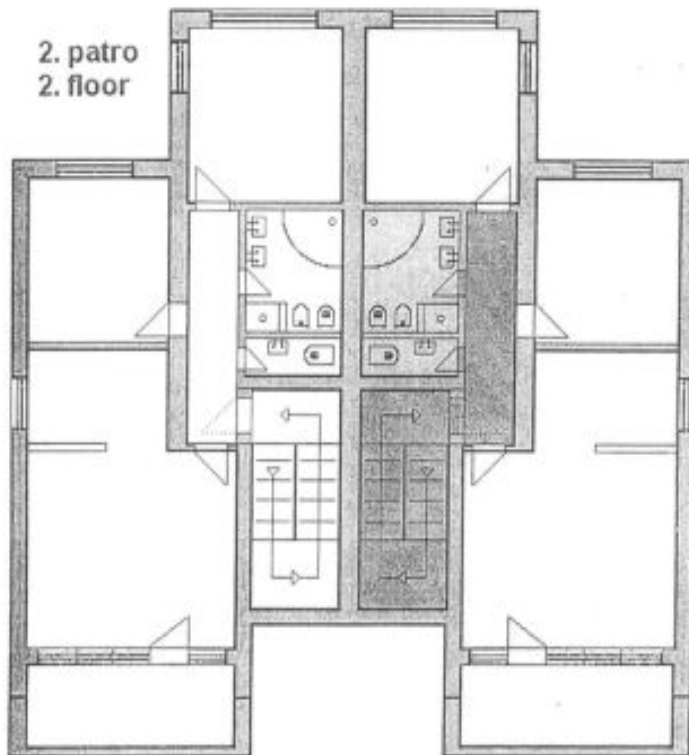
Apartment building

800 m², Prague 4, Kamýk, Písnická

Ask for price

2. patro

Stránka č. 1 z 1





Apartment building

800 m², Prague 4, Kamýk, Písnická

Ask for price

3.patro

Stránka č. 1 z 1

