



Apartment One-bedroom (2+kk)

Rented

91 m², Praha 5, Smíchov, Holečkova





Apartment One-bedroom (2+kk)

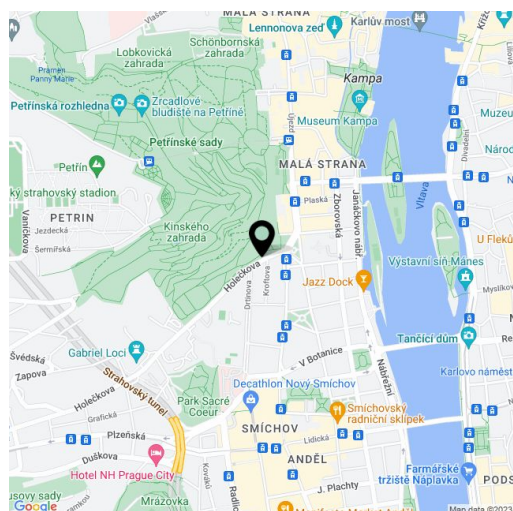
Rented91 m², Praha 5, Smíchov, Holečkova

Total area	93 m ²
Floor area*	91 m ²
Balcony	2 m ²
Parking	On-site garage parking.
Garage	Yes
Cellar	Yes
PENB	C
Reference number	23846
Available from	Immediately

Modern air-conditioned partly furnished 1-bedroom flat with a balcony and green views, situated on the fourth floor of the modern project Residence Sacre Coeur 2. Located in Hřebenky, a highly sought after residential area in close vicinity of the Kinského Garden, Petřín hill and Nový Smíchov shopping and entertainment center. The residence offers 24-hour reception, underground garage parking and camera surveillance system. Quiet area with bus connections, convenient to Újezd trams, Anděl metro, and the French School, quick access to the city center. Bus stop in front of the building, direct connection to the airport.

The interior features a spacious living room with a fully fitted open kitchen and balcony access, one bedroom, shower bathroom with toilet, a guest toilet, walk-in closet / storage room, and entry hall.

Wooden floors, security entry door, French windows, blinds, floor heating, built-in wardrobes, washer with dryer, dishwasher, microwave oven, video entry phone, high quality technical equipment, 4 m² cellar, chip entry. One garage parking space included. Common building charges, water and heating CZK 6500/month. Electricity is billed extra. Available from May 2021.



* Area of the unit according to the Civil Code. The area consists of the sum total area of the entire unit bounded by perimeter walls.

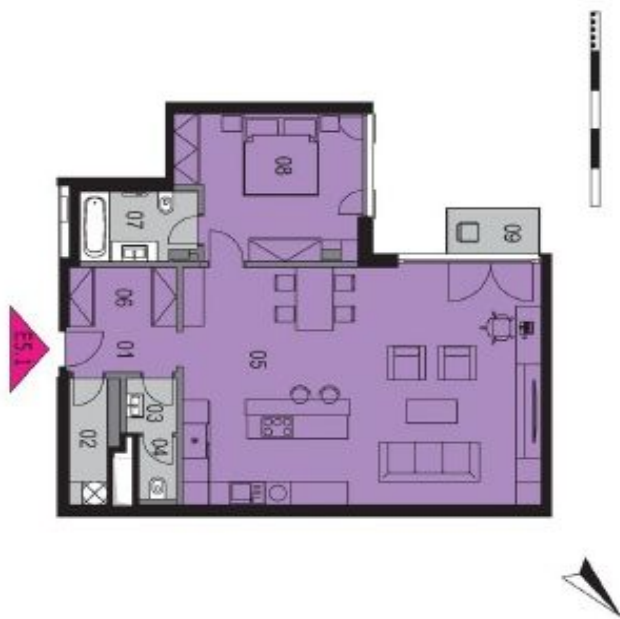


Apartment One-bedroom (2+kk)

91 m², Praha 5, Smíchov, Holečkova

Rented

SACRE COEUR 2 | E5.1 | 2+kk | 5. podlaží



cena vč. DPH: **na vyžádání**

místnost	m ²
01 vstupní hala	3,6 m ²
02 komora	3,1 m ²
03 předstíh WC	1,8 m ²
04 WC	1,4 m ²
05 obývací pokoj + KK	52,8 m ²
06 vstupní šatna	3,8 m ²
07 koupelna	4,6 m ²
08 pokoj	15,6 m ²
průčky, sloupy a šachty	3,0 m ²
obývací plocha	89,7 m ²
sklep	4,2 m ²
užitná plocha	93,9 m ²
09 balkon	2,5 m ²
celková plocha	96,4 m ²
garáže, sklepy, sklady	
sklep	S02.23
garážové stání	G02.90

