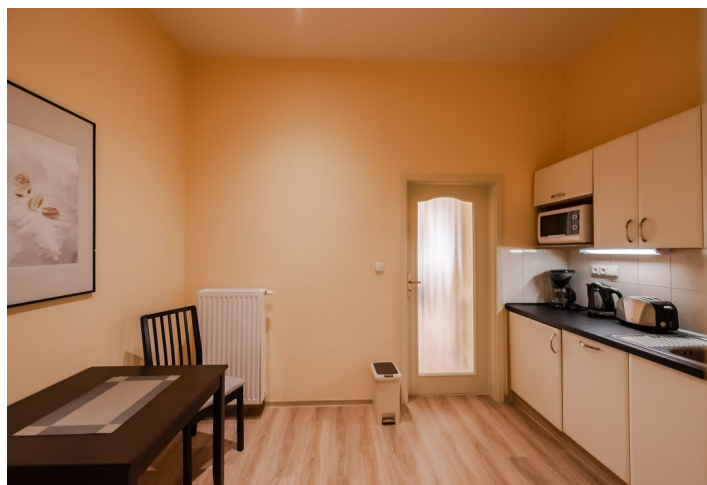




## Apartment Studio (1+1)

40 m<sup>2</sup>, Prague 2, Vinohrady, Máchova

€ 834 | CZK 21 000





## Apartment Studio (1+1)

40 m<sup>2</sup>, Prague 2, Vinohrady, Máchova

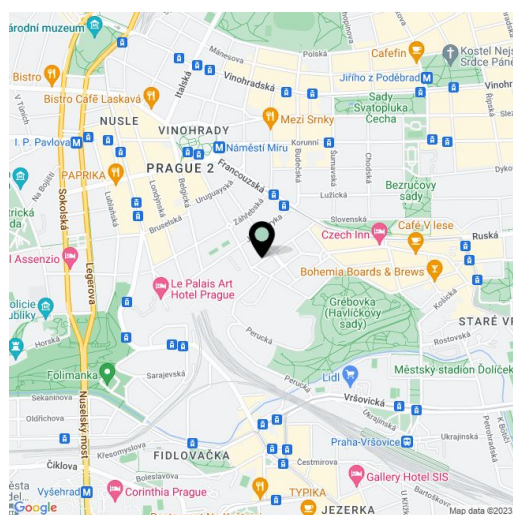
€ 834 | CZK 21 000

Total area	40 m <sup>2</sup>
Parking	Parking can be arranged.
Garage	Yes
Cellar	-
PENB	G
Reference number	23921
Available from	Immediately

Fully reconstructed furnished studio apartment situated on the first floor of a completely newly refurbished traditional building with lift. Well located in a quiet street in the popular Vinohrady residential neighborhood, just a short walk from Havlíčkovy Sady Park, one tram stop or a four minute walk to Náměstí Míru metro station. Full amenities within easy reach.

The interior features a fully fitted walk-through kitchen, living room / bedroom, shower bathroom with toilet, and entry hall.

High ceilings, large windows, laminated floors, built-in wardrobes, security entry door, washer, dishwasher, TV, audio entry phone. Garage parking can be arranged at CZK 2000/month plus VAT. Common building charges, Internet and satellite connection CZK 3000/month. Gas, water and electricity CZK 2000/month. Short term possible at higher rent.



\* Area of the unit according to the Civil Code. The area consists of the sum total area of the entire unit bounded by perimeter walls.