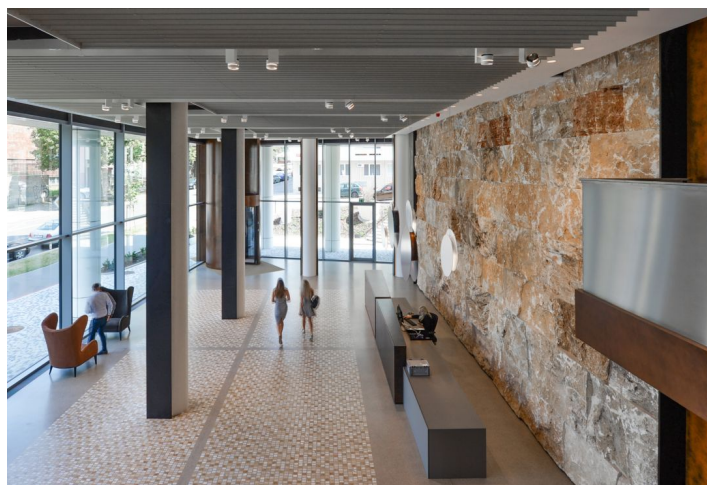




Office space

Praha 4, Nusle, Lomnického

€ 15.75 / m² | CZK 399 / m²



**Office space**

Praha 4, Nusle, Lomnického

€ 15.75 / m² | CZK 399 / m²

Service price	185 CZK monthly per m ²
Available area	208 m ²
Cellar	-
Parking	EUR 110 / ps / month
PENB	G
Reference number	23946

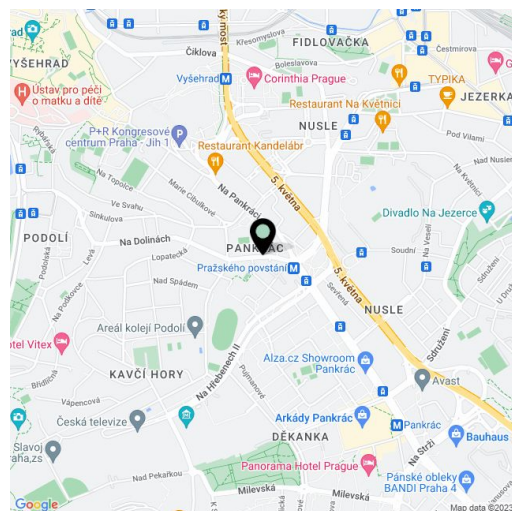
Office space for lease on the 6th floor in the new administrative project located in Prague 4. The building offers more than 7,000 m² of modern, highly flexible office space on seven storeys which meets the highest international quality standards.

Location:

Excellent accessibility by car and public transport – in close vicinity of the metro station of the Pražského povstání metro station (line C), tram and bus stops. Easy access to the D1 highway and through Prague Ring Road to the international airport Vaclav Havel Prague. The nearby shopping center Arkady Pankrac provides all the amenities and is just a 10-minute walk.

Features and Services:

- Reception
- Magnetic card entrance systém
- Security
- Elevators
- Flexible office layout
- Air conditioning
- Smoke detectors
- Suspended ceilings
- Openable windows
- Wall partitioning
- Raised floors
- Carpeting
- Underground parking



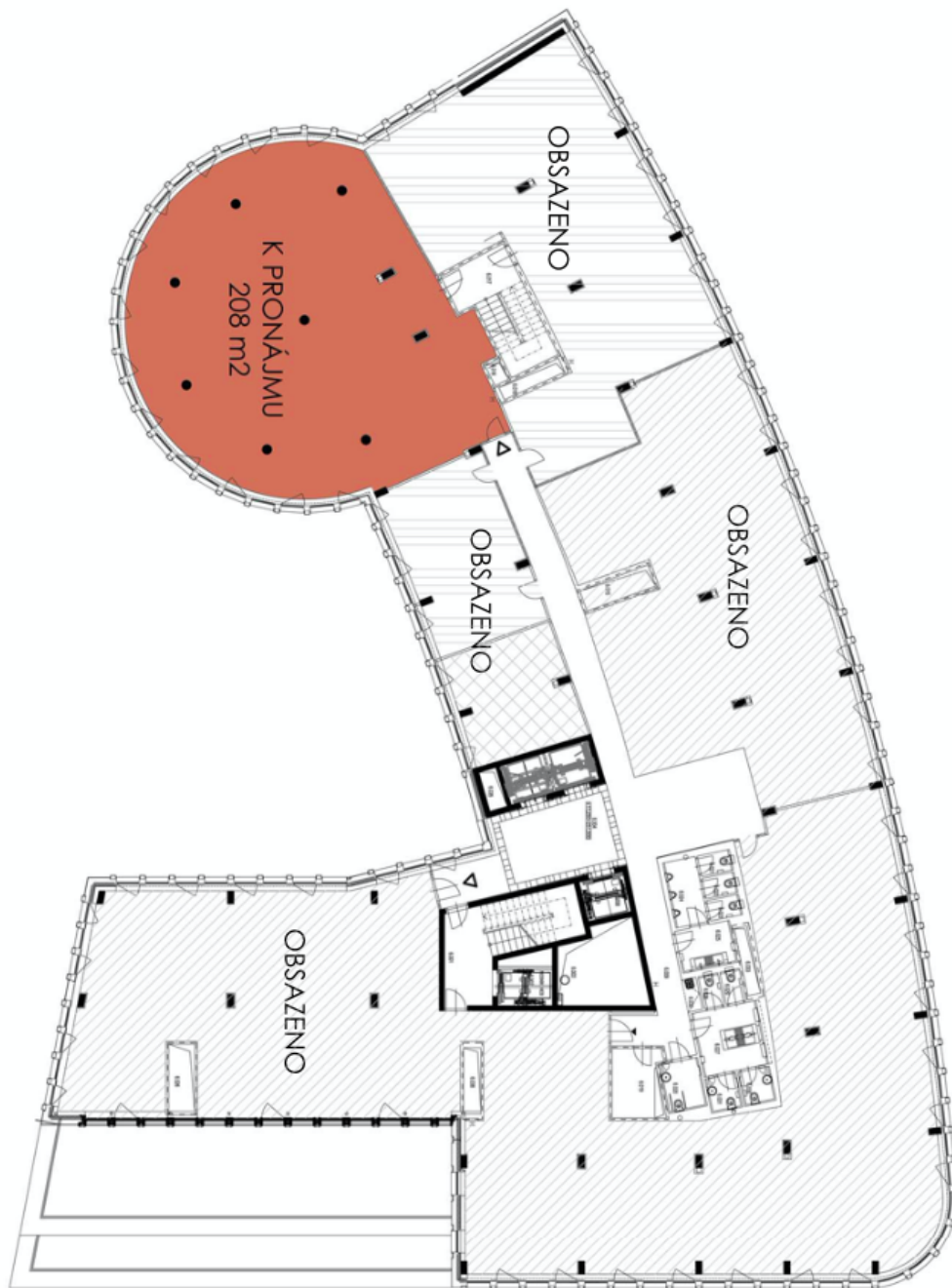
Rental and service charges listed without VAT. Lessee pays no commission.



Office space

Praha 4, Nusle, Lomnického

€ 15.75 / m² | CZK 399 / m²



6NP