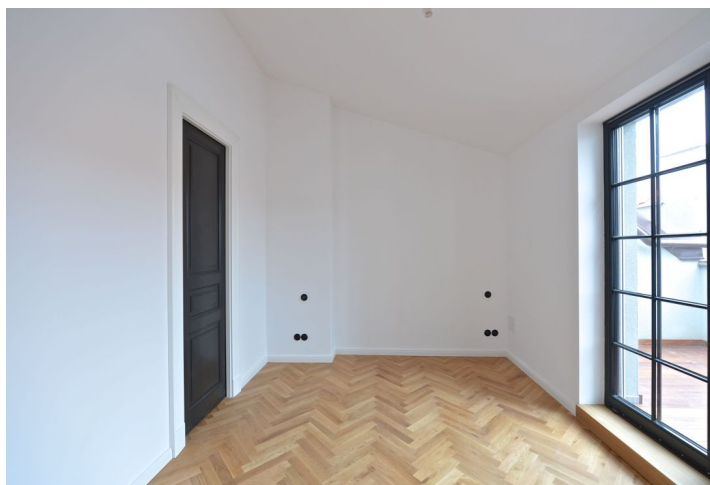




Apartment Four-bedroom (5+kk)

Sold

130 m², Prague 7, Bubeneč, Jana Zajíce





Apartment Four-bedroom (5+kk)

Sold130 m², Prague 7, Bubeneč, Jana Zajíce

Total area	137 m ²
Floor area*	130 m ²
Terrace	7 m ²
Parking	-
Cellar	Yes
Service price	3 000 CZK monthly
PENB	G
Reference number	23950

Unique brand new apartment with a terrace and tower, situated on the 5th and 6th floors of a completely renovated building with an elevator. This air-conditioned, spacious and completely quiet flat elegantly combines original and modern features and is located in one of the most desirable residential locations in Bubeneč, between Stromovka and Letná parks.

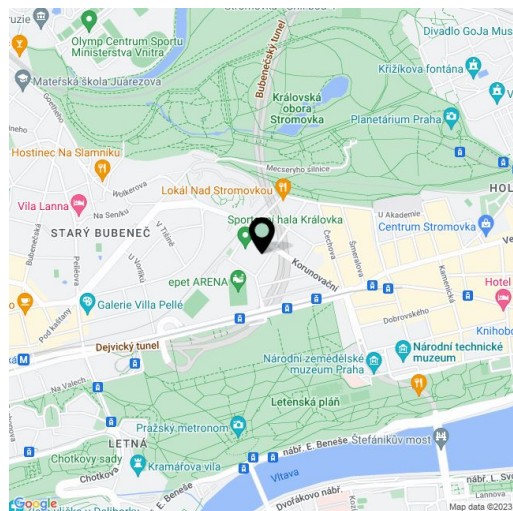
The lower, entry level of the apartment features a living room with kitchen, dining area and access to the terrace, 2 bedrooms, study, 1 en-suite and one shared bathroom, closet and hallway. The upper level features another bedroom (in the tower, with a round window), attic suitable for another bedroom, and an attic storage space. Possibility to create a separate entrance for the 6th floor.

Amenities include **air-conditioning**, oak parquet floors, **new casement windows** and wooden windows, wooden interior doors and a security entry door, custom-made kitchen fully equipped with appliances, built-in wardrobes, underfloor heating, Veissmann gas boiler, rain shower, data and TV network distribution in every room, ample storage space, preparation for fireplace. The purchase price includes **2 cellars**, **parking is possible in the yard next door**.

Highly sought after area of Bubeneč right between Stromovka and Letná parks, offering plenty of social and cultural opportunities. The building is located on a quiet, green street away from any urban bustle, yet within easy reach of quality schools, shops, delis, restaurants and other services.

Common building charges approximately CZK 3 000/month.

Interior 129.48 m², attic 43.55 m², terrace 7.4 m², separate brick cellars 4.7 + 3.9 m².



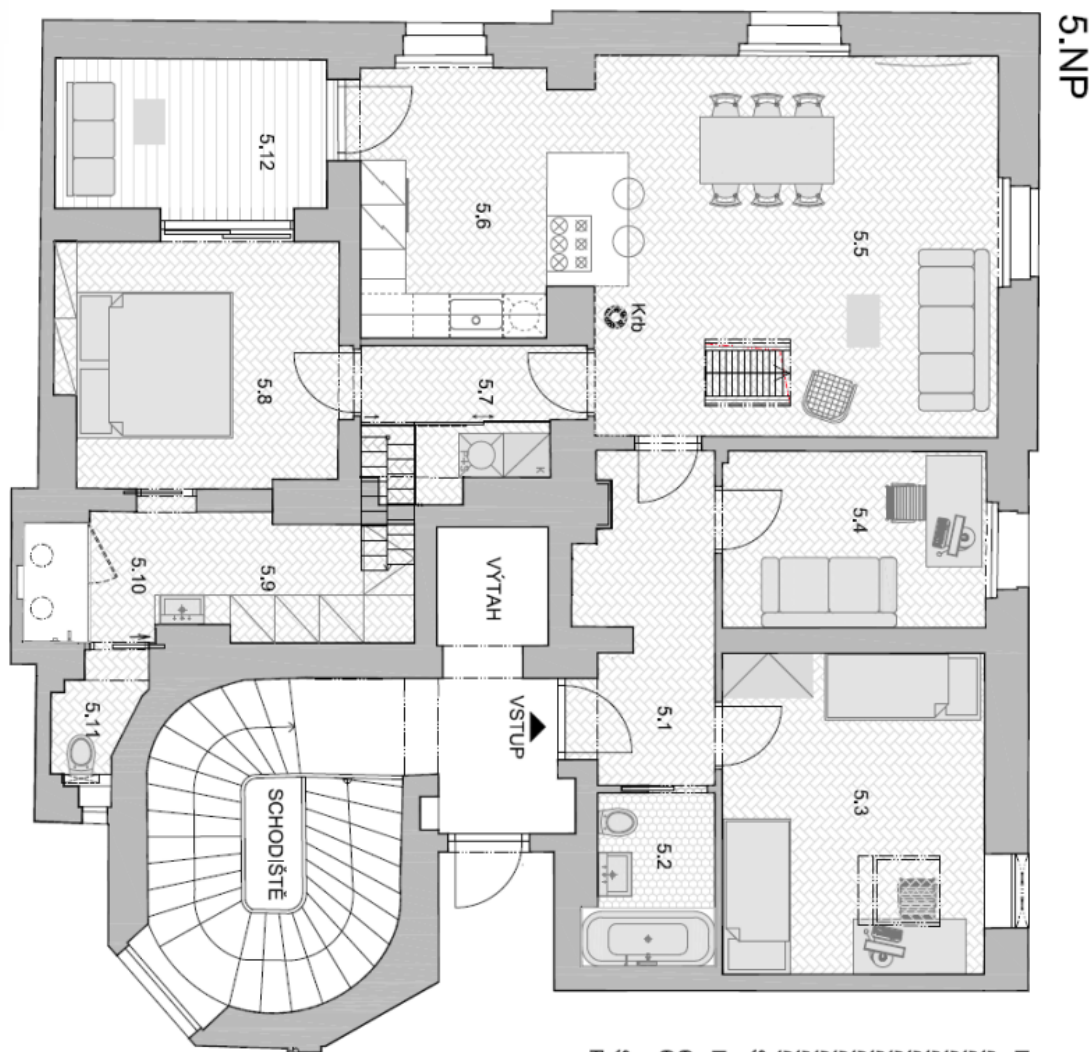
* Area of the unit according to the Civil Code. The area consists of the sum total area of the entire unit bounded by perimeter walls.



Apartment Four-bedroom (5+kk)

130 m², Prague 7, Bubeneč, Jana Zajice

Sold



BYT & 5.1	5.NP
5.1 VSTUPNÍ HALA	7,70 m ²
5.2 KOUPELNA	3,88 m ²
5.3 LOŽNICE	15,30 m ²
5.4 LOŽNICE	8,45 m ²
5.5 OBÝTNÍ HALA	27,97 m ²
5.6 KUCHYŇ	10,88 m ²
5.7 CHODBA	5,42 m ²
5.8 LOŽNICE	12,30 m ²
5.9 SÁTKNA	4,03 m ²
5.10 KOUPELNA	4,89 m ²
5.11 WC	1,63 m ²
5.12 TERASA	7,43 m ²
SPOLU 5.NP	109,88 m²
BYT & 5.1	6.NP
6.1 OBÝTNÍ VĚŽ	27,03 m ²
6.2 OBÝTNÍ PŮDA	43,55 m ²
SPOLU 6.NP	70,58 m²
PLOCHA CELKEM	180,46 m²



Apartment Four-bedroom (5+kk)

130 m², Prague 7, Bubeneč, Jana Zajíce

Sold

