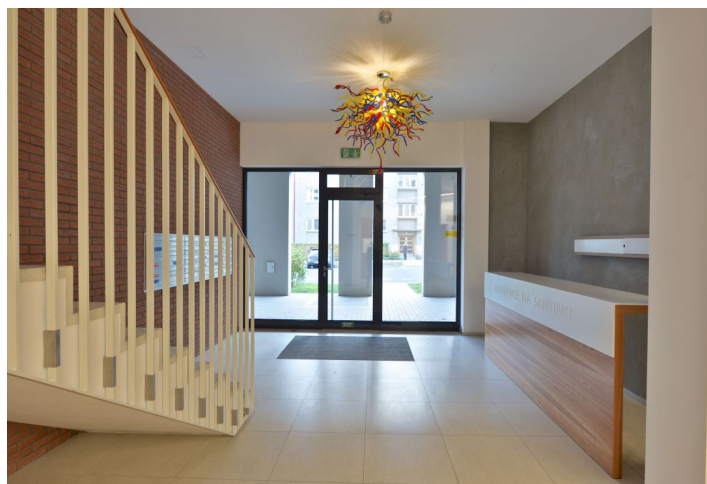




# Office building

Prague 6, Dejvice, Bechyňova

Rented





## Office building

Prague 6, Dejvice, Bechyňova

Rented

Service price	65 CZK monthly per m <sup>2</sup>
Total building area	157 m <sup>2</sup>
Tenant consumption	—
Parking	CZK 2500 / ps / month
Parking service charges	—
Parking ratio	—
Certification	—
PENB	G
Reference number	23980

Modern apartment building with office space for lease situated in an attractive part of Prague 6 – Dejvice.

### Location:

The building is situated close to Vítězné náměstí and the new Faculty of Architecture CTU and is easily accessible by car and public transport – in close vicinity of tram stops, Dejvická metro station (line A) is about a 10 minutes' walk. Easy access to the city center and to the international Vaclav Havel Airport Prague. Šárecké údolí is close to the building.

### Features and Services:

Open commercial space and facilities with storage, 2 toilets, shower, and cleaning closet. The exclusivity of the project is determined not only by the very reputable location, but also the layout of the interior that includes a glass atrium lobby. High standard equipment, a multi-story underground garage, exclusive materials used for the exterior and interior. Commercial units are accessible from the arcades lining the street facade.

Rental price **CZK 363/m<sup>2</sup>/month**. Rental and service charges are listed without VAT. Lessee pays no commission.



