



Apartment Five-bedroom (6+kk)

Rented

203 m², Prague 1, Josefov, Pařížská





Apartment Five-bedroom (6+kk)

Rented

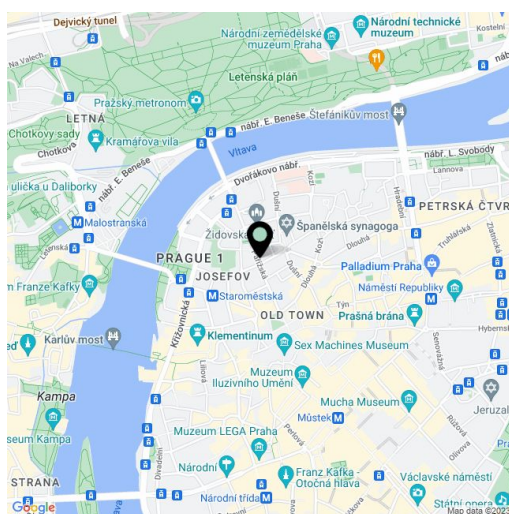
203 m², Prague 1, Josefov, Pařížská

Total area	207 m ²
Floor area*	203 m ²
Balcony	4 m ²
Parking	-
Garage	Yes
Cellar	-
Service price	Common building charges CZK 20,000/month. Electricity - transferred to the tenant.
PENB	D
Reference number	24036
Available from	Immediately

This unique, unfurnished luxurious apartment inspired by Paris and designed by the Czech designer Ivanka Kowalski boasts one of the most prestigious addresses in Prague. Completely refurbished, the apartment on the 2nd floor of a meticulously reconstructed stately Art Nouveau building with an elevator is in the heart of the historic center, within instant reach of luxury boutiques, shops, and restaurants. Located a few minutes from Old Town Square and the Vltava riverbank, within easy reach of most of Prague's historic sights.

The sophisticated interior features a living room with a fully fitted kitchen and dining area with a dining table seating ten (total of 73 m²), four bedrooms, five bathrooms, a study, a guest toilet, an entrance hall, and two balconies.

Elegant interior design, air-conditioning, high ceilings, fireplace, plenty of built-in wardrobes and storage, grey oak floors, wooden windows, marble in the kitchen and bathrooms, screed surfaces, large-format tiles, blackout blinds, curtains, video entry phone. The apartment is offered **unfurnished**.



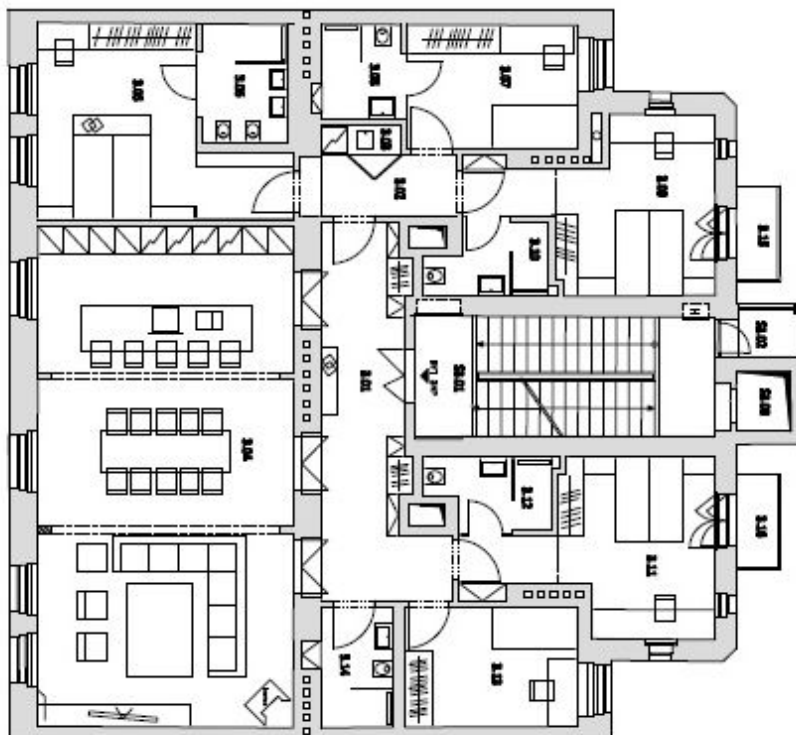
* Area of the unit according to the Civil Code. The area consists of the sum total area of the entire unit bounded by perimeter walls.



Apartment Five-bedroom (6+kk)

203 m², Prague 1, Josefov, Pařížská

Rented



PŮDORYS 3.NP

Č.	NÁZEV	m ²
SPOLÉČNÉ PROSTORY		
S.1.1	SKLOPITEL	18,9
S.1.2	LODŽIE	2,9
S.1.3	VÝTĚH	1,8
BRÝTNÝ		
S.1.1	CHODBA	21,4
S.1.2	CHODBA	5,8
S.1.3	Jednoduchá koupelna	1,8
S.1.4	GRV, KONDENZÁTNIK+STĚNA	71,1
S.1.5	LODŽIE	28,9
S.1.6	KOUPELNA+WC	8,7
S.1.7	LODŽIE	11,8
S.1.8	KOUPELNA+WC	4,5
S.1.9	LODŽIE	16,8
S.1.10	KOUPELNA+WC	4,8
S.1.11	LODŽIE	17,5
S.1.12	KOUPELNA+WC	4,8
S.1.13	LODŽIE	11,8
S.1.14	WC+SPRCHA	5,1
S.1.15	BALDOK	2,9
S.1.16	BALDOK	2,9