



## Apartment Five-bedroom (6+kk)

Rented

297 m<sup>2</sup>, Prague 1, Josefov, Pařížská





## Apartment Five-bedroom (6+kk)

Rented

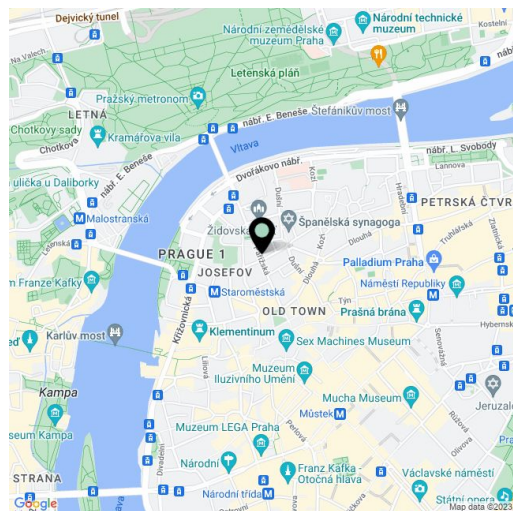
297 m<sup>2</sup>, Prague 1, Josefov, Pařížská

Total area	322 m <sup>2</sup>
Floor area*	297 m <sup>2</sup>
Terrace	25 m <sup>2</sup>
Parking	-
Cellar	-
PENB	D
Reference number	24038
Available from	Immediately

Extraordinary unfurnished luxurious three-level attic flat with a roof terrace, designed by Rostislav Černík and Ivana Dombková from the renown I.D.Arch studio, set on one of the most prestigious addresses in Prague. This completely refurbished 5-bedroom 5-bathroom flat on the sixth-eighth floor of a meticulously reconstructed stately Art Nouveau building with lift, in the heart of the historic center, within instant reach of luxury boutiques, shops and restaurants. Located a few minutes from the Old Town Square and the Vltava riverbank, within easy reach of most Prague historic sights.

The conservative interior, laid out on three levels, includes a double height living room with a fully fitted kitchen and dining area with a dining table for ten (total of 105 m<sup>2</sup>), five bedrooms - one of them designed as a gallery overlooking the living area, five bathrooms, a guest toilet, and entrance hall. The fourth floor features a 24 m<sup>2</sup> roof terrace enjoying wonderful panoramic views of Prague.

Air-conditioning, solid wood floors, tiles, lots of built-in wardrobes and storage, wooden windows, curtains, roller blinds, alarm, video entry phone. Common building charges CZK 15,000/month. Electricity will be transferred to the tenant. The apartment is offered **unfurnished**. Available from **July 2022**.



\* Area of the unit according to the Civil Code. The area consists of the sum total area of the entire unit bounded by perimeter walls.

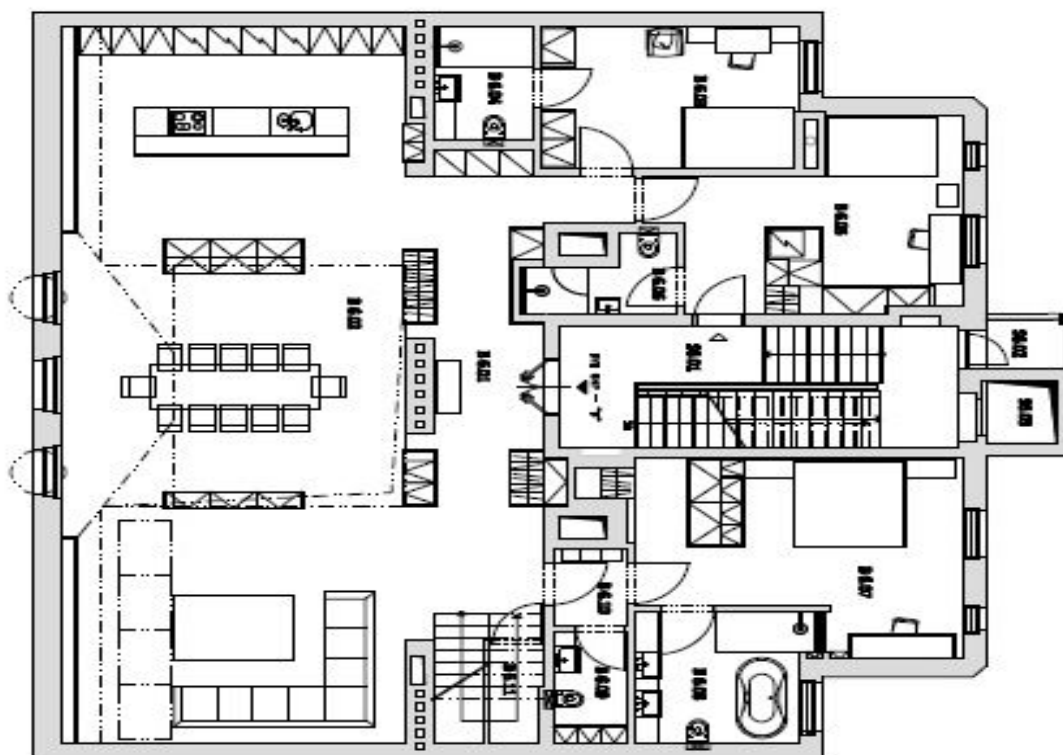




# Apartment Five-bedroom (6+kk)

Rented

297 m², Prague 1, Josefov, Pařížská



PŮDORRYS 6.NP

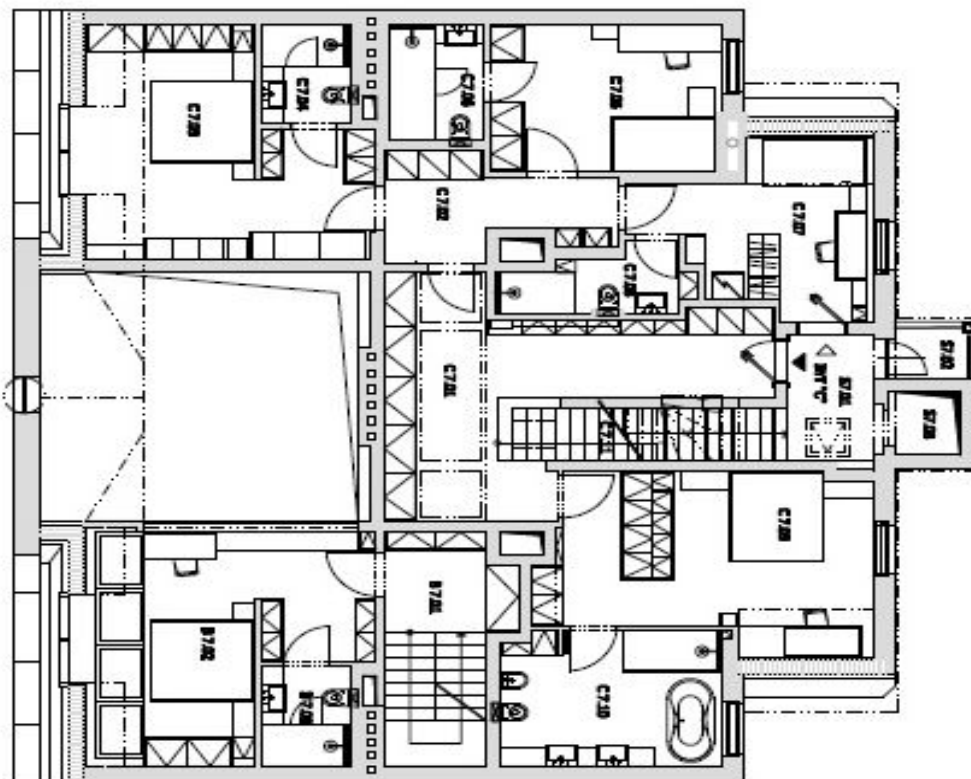
Č	Název	m²
<b>SPOLICNĚ PROSTORY</b>		
SA.01	SKLADSKÉ	18,9
SA.02	LODŽIE	2,5
SA.03	VÝTĚH	1,8
<b>BRŤ 6NP "P"</b>		
B.6.01	CHODBA + SKLADSKÉ	28,0
B.6.02	OBÝV. PROSTĚJ + KUCHYNĚ + JÍDELNA	105,2
B.6.03	LODŽIE	14,9
B.6.04	KOUPELNA + WC	4,8
B.6.05	LODŽIE + CHODBA	19,7
B.6.06	KOUPELNA + WC	8,8
B.6.07	LODŽIE + BALKÓN	29,8
B.6.08	KOUPELNA + WC	9,0
B.6.09	WC	8,5
B.6.10	CHODBA	2,4
B.6.11	TECHNICKÁ NĚKOST	2,2



# Apartment Five-bedroom (6+kk)

Rented

297 m², Prague 1, Josefov, Pařížská



PŮDORIS 7.NP

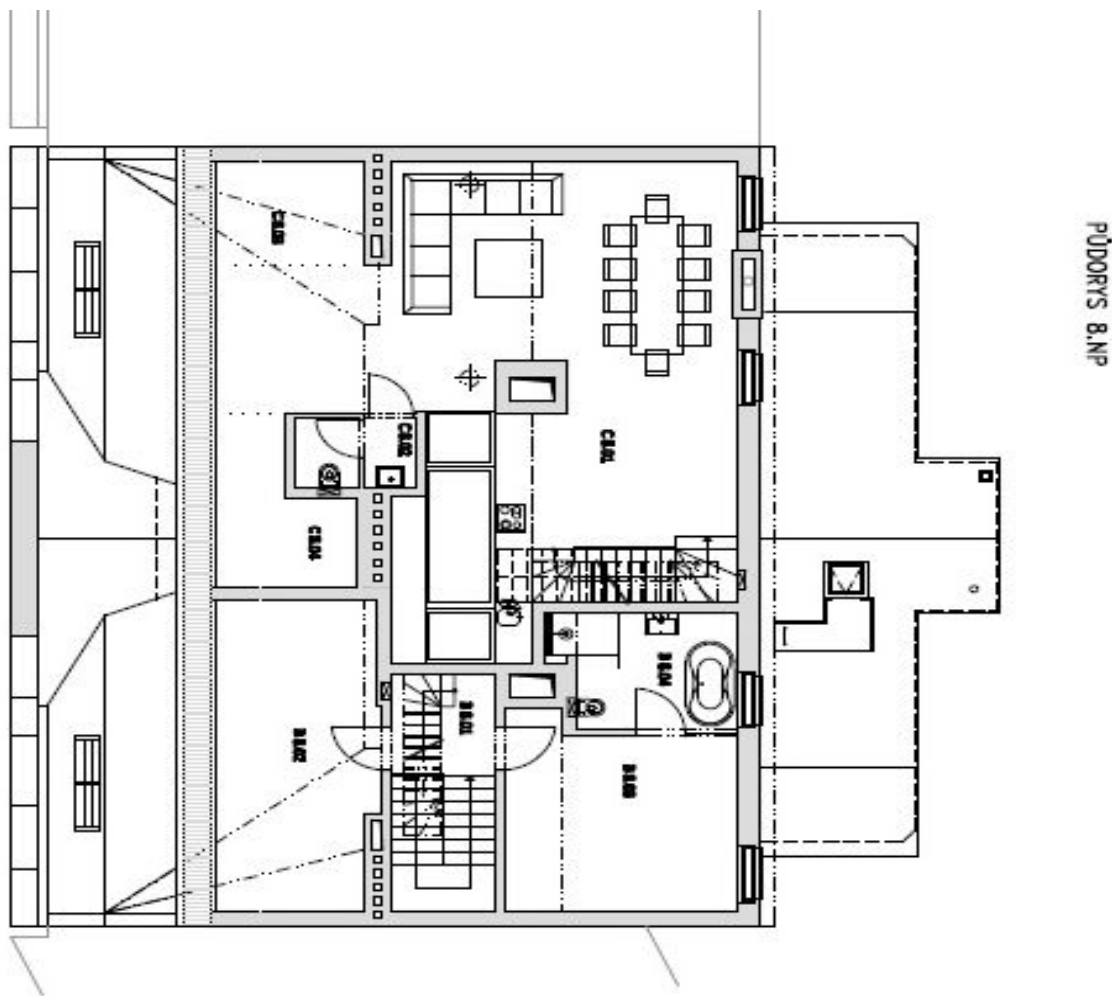
č.	Název	m²
SPOLÉČNÉ PROSTORY		CELKEM 144,4
S7.01	SKLADISŤE + PODSTATA	18,3
S7.02	LODŽIE	2,9
S7.03	VÝTAH	1,8
BRŤ NP "B"		CELKEM 87,9
B7.01	SKLADISŤE + SÁTKOVA	11,3
B7.02	LODŽICE	22,2
B7.03	KOUPELNA + WC	3,9
BRŤ NP "C"		CELKEM 185,3
C7.01	CHODBA	28,0
C7.02	CHODBA	8,8
C7.03	LODŽICE	21,5
C7.04	KOUPELNA + WC	3,9
C7.05	LODŽICE	14,3
C7.06	KOUPELNA + WC	4,8
C7.07	POKOJ	18,6
C7.08	KOUPELNA + WC	4,6
C7.09	LODŽICE + SÁTKOVA	29,0
C7.10	KOUPELNA + WC	12,8
C7.11	SKLADISŤE	5,2



# Apartment Five-bedroom (6+kk)

Rented

297 m<sup>2</sup>, Prague 1, Josefov, Pařížská



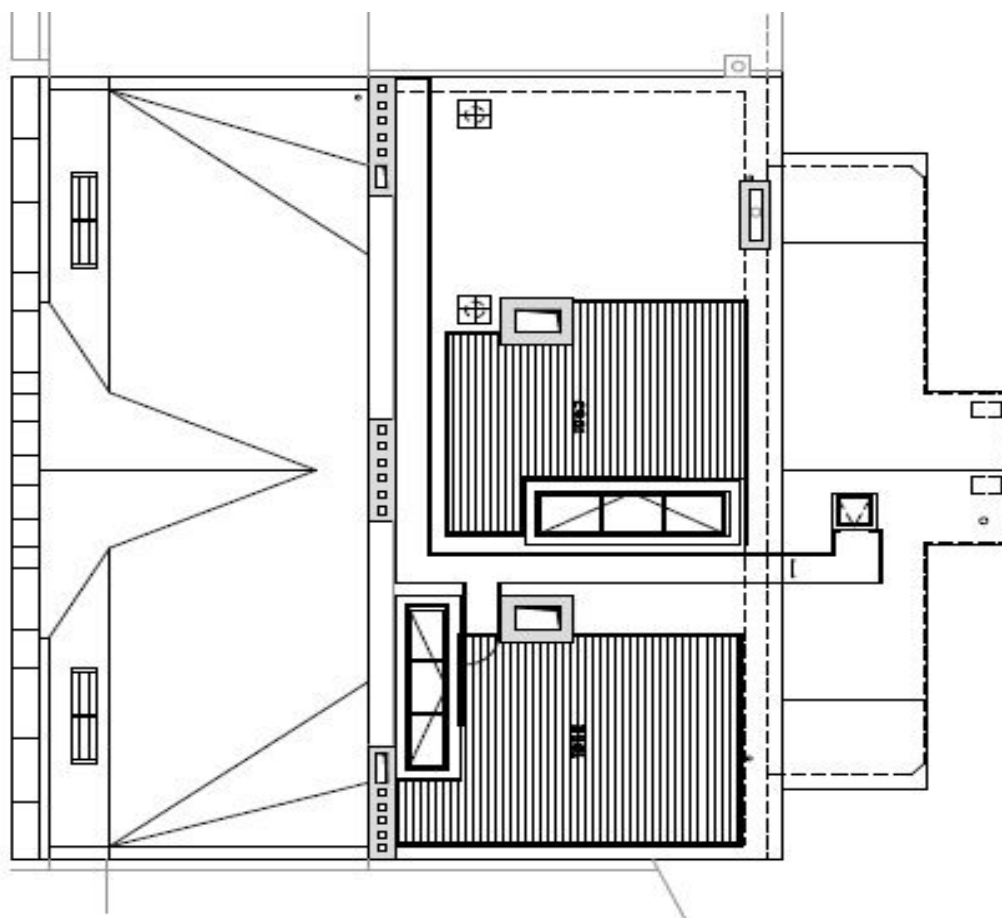
Č	Název	m <sup>2</sup>
BRT 8NP "B"		CELKEM 44,9
B.8.01	CHODBA	4,4
B.8.02	SKLAD - ŠATNA	20,5
B.8.03	LOŽNICE	11,7
B.8.04	KOUPELNA + WC	8,3
BRT 8NP "C"		CELKEM 61,9
C.8.01	OBŮV. POKOJ + KUCHYŇE + JÍDLNA	71,3
C.8.02	WC	3,5
C.8.03	SKLAD ŠATNA	4,5
C.8.04	SKLAD ŠATNA	7,7



# Apartment Five-bedroom (6+kk)

297 m<sup>2</sup>, Prague 1, Josefov, Pařížská

Rented



PUDORYS 9.NP – STŘECHA, TERASY

Č	NÁZEV	m <sup>2</sup>
B.1.1	BYT 5NP 1 <sup>W</sup>	24,8
B.1.2	BYT 5NP 1 <sup>C</sup>	20,8
B.1.3	BYT 5NP 1 <sup>T</sup>	20,8