



House Seven-bedroom (8+1)

Rented

356 m², Prague 6, Dejvice, V Šáreckém údolí





House Seven-bedroom (8+1)

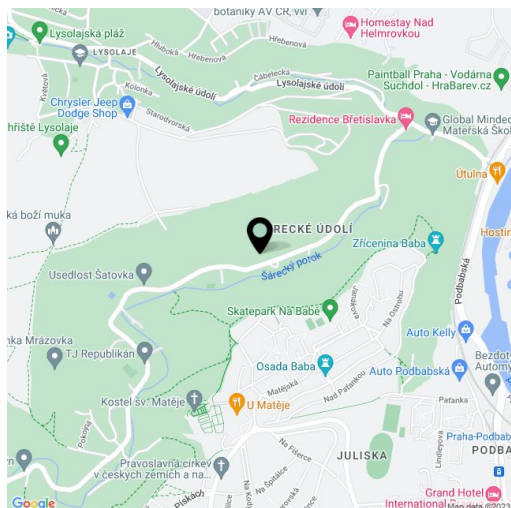
Rented356 m², Prague 6, Dejvice, V Šáreckém údolí

Plot	1 346 m ²
Foot print	163 m ²
Garden	1 183 m ²
Parking	Garage for two cars + parking on the plot.
Garage	Yes
Cellar	Yes
PENB	G
Reference number	24066
Available from	Immediately

Directly adjacent to a forest and boasting plenty of space and light, this elegant 1930's villa with a terraced garden is located in the attractive natural area of Dolní Šárka. Quiet location with easy access downtown, to the airport and to the international schools in Prague 6. Bus connections to metro Dejvická with full amenities nearby. Only a few steps from the Global Concept Montessori School, a ten minute drive to the International School of Prague in Nebušice.

The ground floor consists of 3 offices, meeting room, bathroom (bathtub, massage walk-in shower), toilet, boiler room, and entry hall. The first floor, which has its own entrance from the external staircase, features living room with a balcony, a fully fitted kitchen open to the dining room and hall, shower bathroom, guest toilet, and entrance hall. On the second floor there are 3 bedrooms (one with en-suite shower bathroom), full family bathroom, and a staircase hall.

Wooden floating floors, ceramic tiles, **new wooden windows** and Velux skylights, **solid wood interior doors** with brass fittings, built-in storage, washer, dryer, alarm. In the rear part of the property there is a paved patio with comfortable seating area. Utilities CZK 7,000/month.

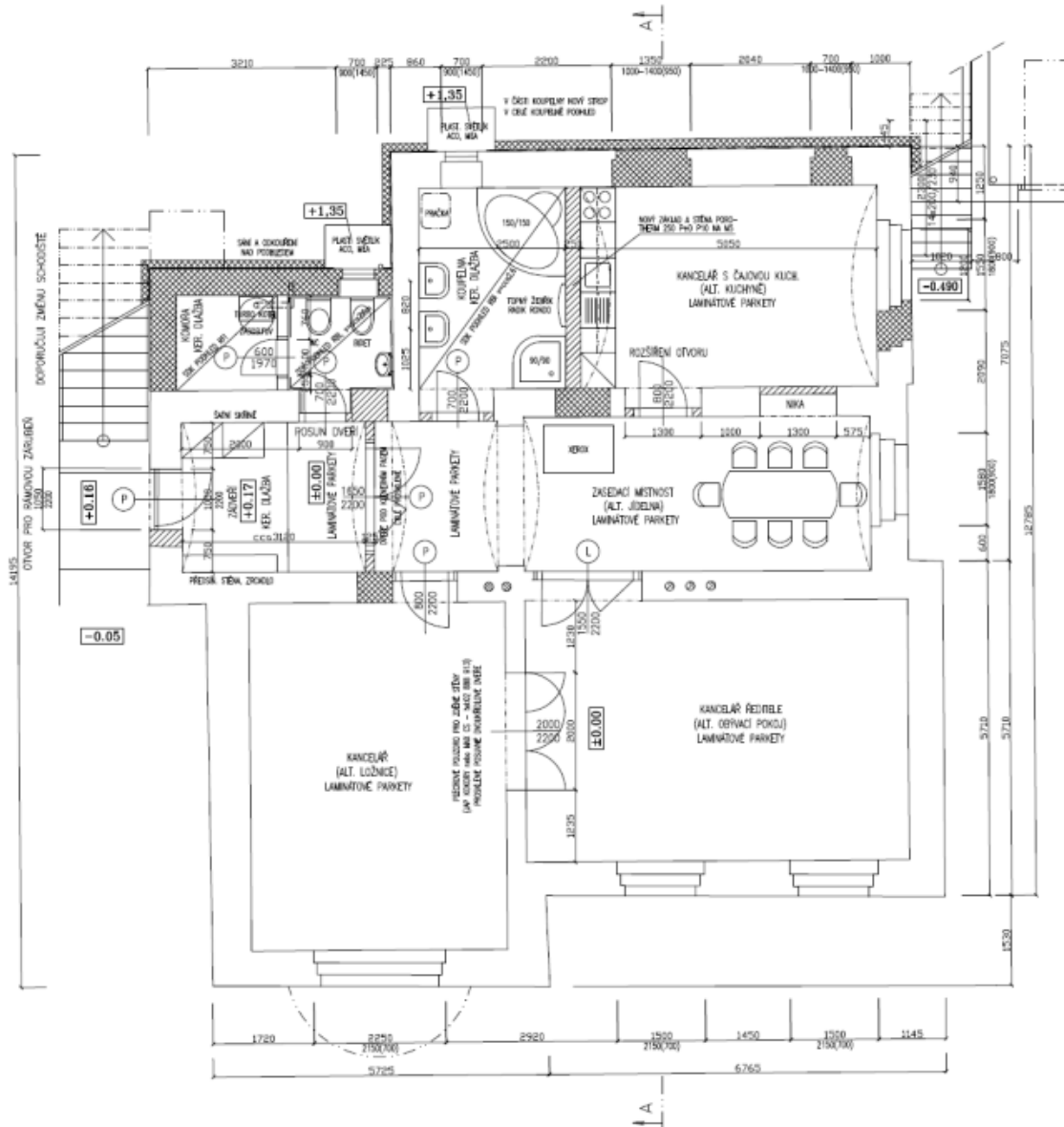




House Seven-bedroom (8+1)

Rented

356 m², Prague 6, Dejvice, V Šáreckém údolí

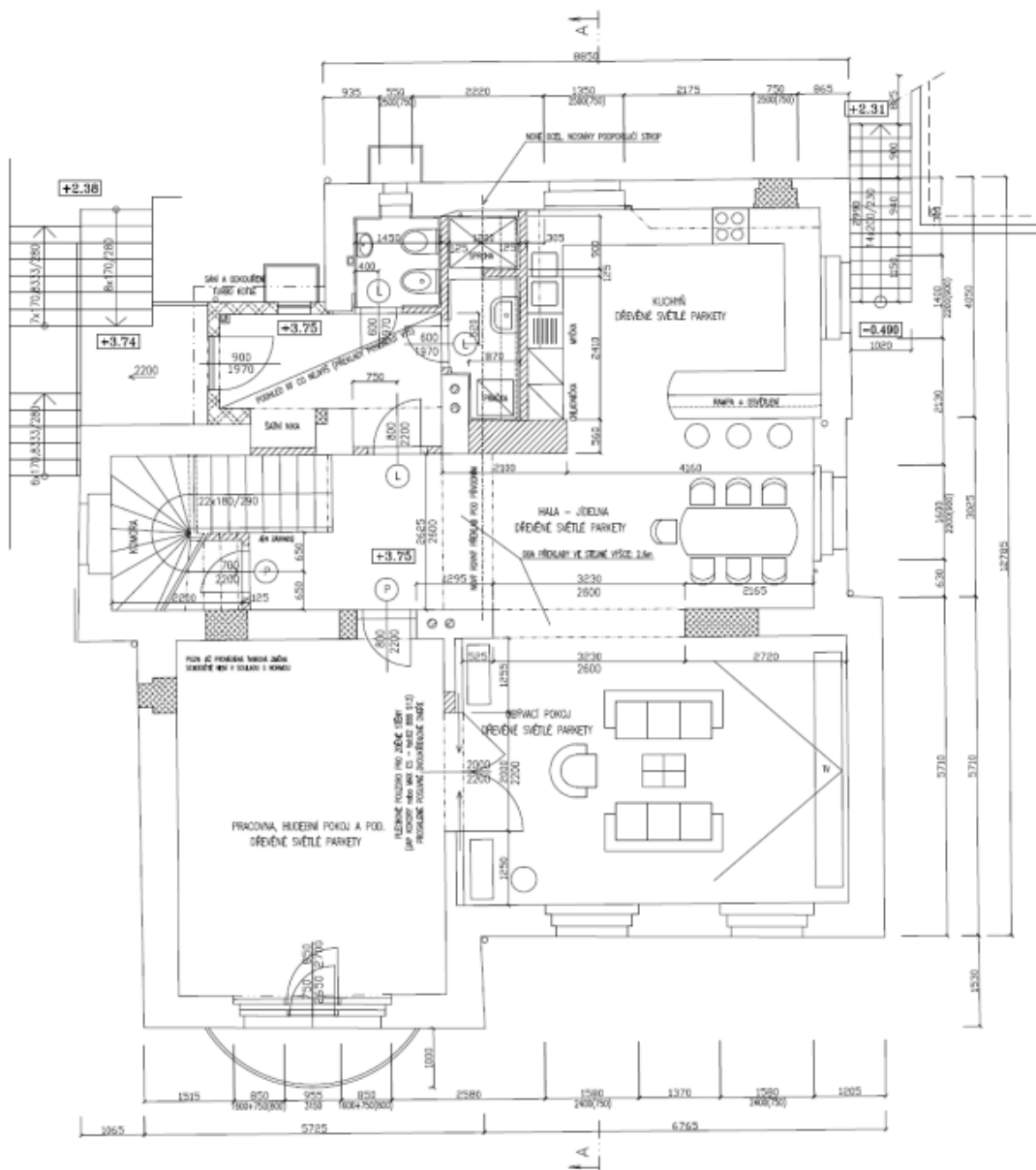




House Seven-bedroom (8+1)

356 m², Prague 6, Dejvice, V Šáreckém údolí

Rented





House Seven-bedroom (8+1)

356 m², Prague 6, Dejvice, V Šáreckém údolí

Rented

