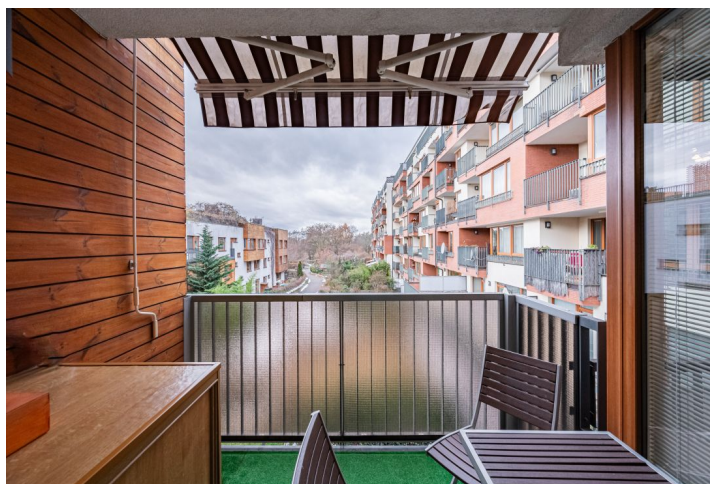
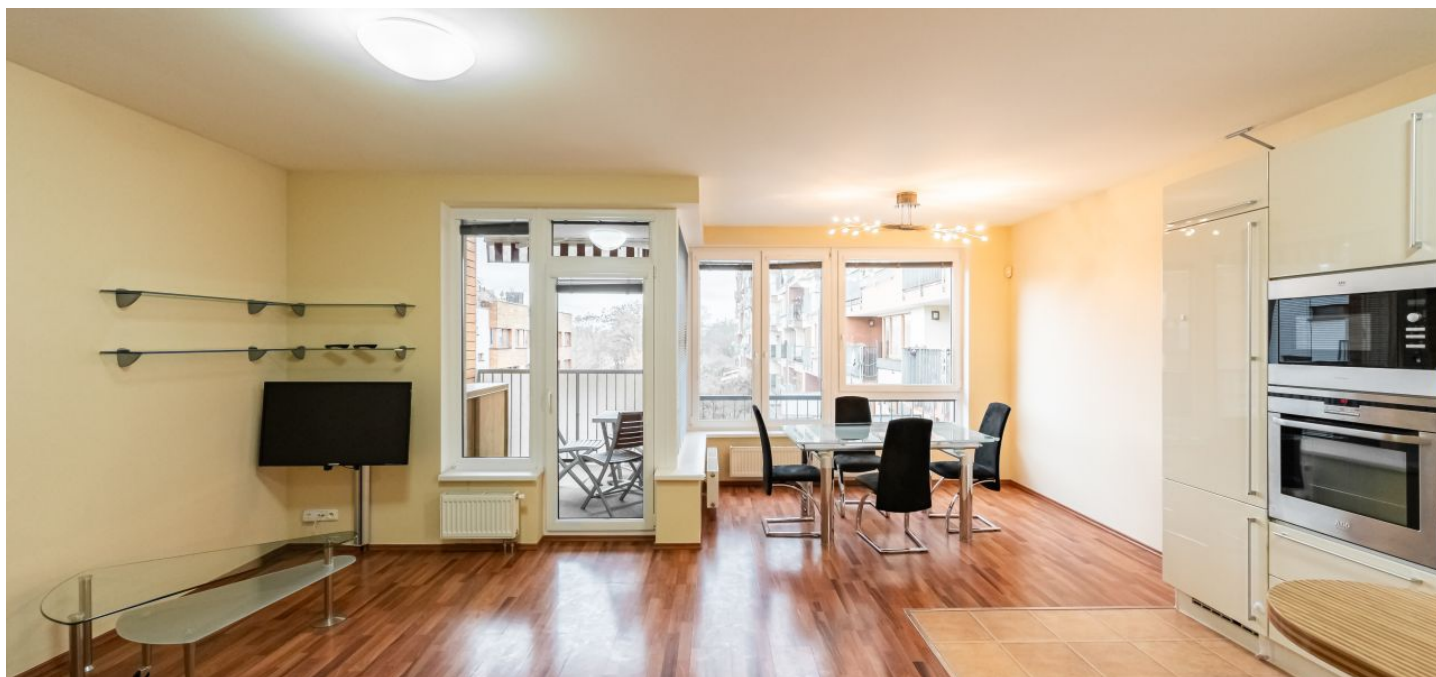




Apartment Two-bedroom (3+kk)

Rented

87 m², Prague 8, Libeň, Nad Okrouhlíkem





Apartment Two-bedroom (3+kk)

Rented

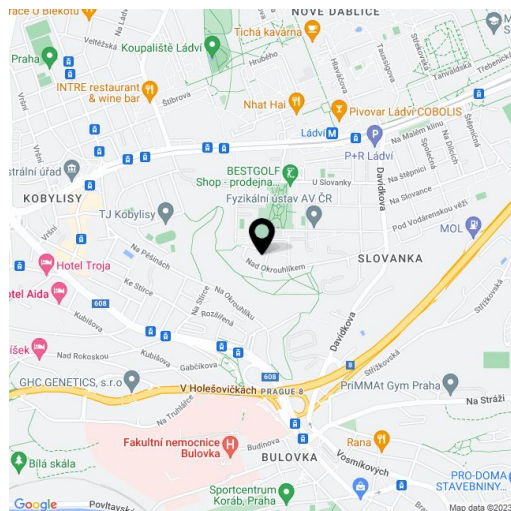
87 m², Prague 8, Libeň, Nad Okrouhlíkem

Total area	129 m ²
Floor area*	87 m ²
Terrace	42 m ²
Parking	Parking available.
Garage	Yes
Cellar	-
Service price	Deposit for common building charges, water, and heating CZK 7,024/month. Electricity - transferred to the tenant.
PENB	C
Reference number	24077
Available from	Immediately

Boasting a huge rooftop terrace providing beautiful views of the surrounding greenery and beyond, this furnished 2-bedroom second floor apartment with two balconies is situated in the Mazanka residential project with a 24-hour reception, manned security, camera system, sauna, whirlpool, and large fitness room. Located in a quiet Prague 8 area near the large Okrouhlík Park, within easy reach of public amenities, just one short bus stop to the Ládví metro station (line C, six min. on foot).

The interior features a living room with a fully fitted open plan kitchen and access to the enclosed balcony, two separate bedrooms (one with access to the balcony), a bathroom with a bathtub, a separate toilet, a storage room, and an entrance hall with built-in wardrobes. Accessible from the living room staircase is a large rooftop terrace providing far-reaching views.

Laminate floors, security entry door, blinds, awning, washer, dishwasher, microwave oven, two TV sets, alarm. Gated project with greenery and benches, chip operated entrance. One parking space available at CZK 2,000/month.



* Area of the unit according to the Civil Code. The area consists of the sum total area of the entire unit bounded by perimeter walls.