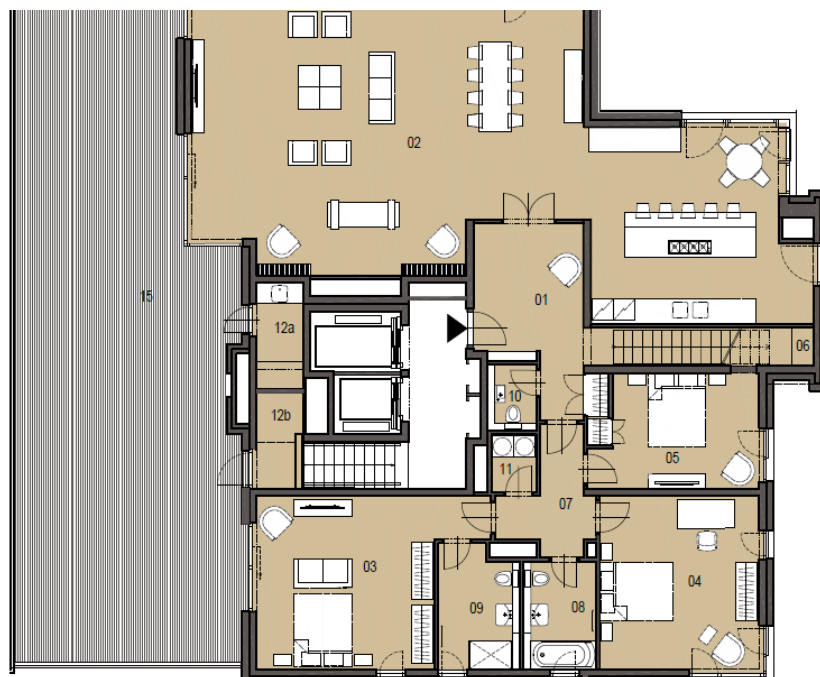




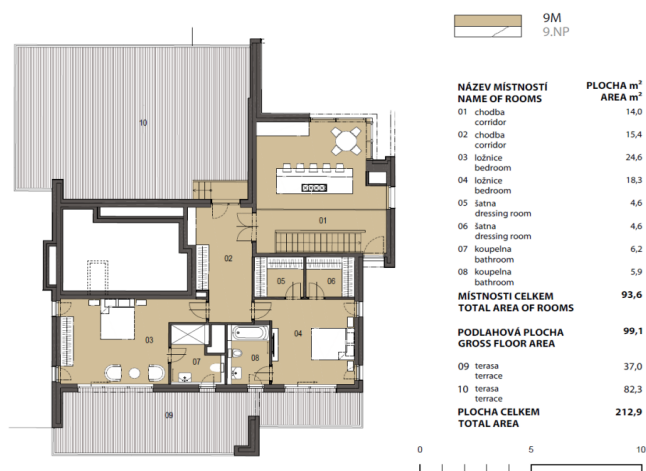
## Apartment Five-bedroom (6+kk)

311 m², Prague 7, Holešovice

Ask for price



|   |              |
|---|--------------|
| living room, kitchen                            |              |
| 03 ložnice<br>bedroom                           | 25,8         |
| 04 ložnice<br>bedroom                           | 21,5         |
| 05 ložnice<br>bedroom                           | 14,3         |
| 06 komora<br>lumber room                        | 3,5          |
| 07 chodba<br>corridor                           | 6,7          |
| 08 koupelna<br>bathroom                         | 5,8          |
| 09 koupelna<br>bathroom                         | 7,2          |
| 10 WC<br>toilet                                 | 2,1          |
| 11 komora<br>lumber room                        | 2,0          |
| 12a komora<br>lumber room                       | 3,9          |
| 12b komora<br>lumber room                       | 3,1          |
| <b>MÍSTNOSTI CELKEM<br/>TOTAL AREA OF ROOMS</b> | <b>219,6</b> |
| <b>PODLAHOVÁ PLOCHA<br/>GROSS FLOOR AREA</b>    | <b>226,7</b> |
| 13 balkon<br>balcony                            | 11,8         |





## Apartment Five-bedroom (6+kk)

[Ask for price](#)311 m<sup>2</sup>, Prague 7, Holešovice

|                  |                                    |
|------------------|------------------------------------|
| Total area       | 570 m <sup>2</sup>                 |
| Floor area*      | 311 m <sup>2</sup>                 |
| Terrace          | 259 m <sup>2</sup>                 |
| Parking          | Garage parking space at extra cost |
| Garage           | Yes                                |
| Cellar           | Yes                                |
| PENB             | B                                  |
| Reference number | 24094                              |

\* Area of the unit according to the Civil Code. The area consists of the sum total area of the entire unit bounded by perimeter walls.

This stunning penthouse with 5 terraces and views of the city and the river lined with mature trees, is part of a newly emerging residential project in a dynamically developing area of Holešovice, Prague 7. Quality-equipped, modern apartments with an ideal orientation to the east and west will offer comfortable living near the city center, with excellent transport accessibility and a wide selection of cultural, social and sports activities. Completion is scheduled for spring 2018.

The lower level of this apartment on the 8th floor includes a living room with preparation for the kitchen, dining area and access to the terrace, 3 bedrooms (one of them with private bathroom and terrace access), shared bathroom, separate toilet, closet, hallway, and an 2 outdoor storage rooms. On the higher level is a spacious gallery, 2 bedrooms with en-suite bathrooms and terrace, corridor, and the last spacious terrace. High-standard equipment will include **triple-layer Magnum oak floors**, Technoart or Impronta large format tiles, **Hanák interior doors with concealed hinges and magnetic locks**, windows with triple glass and outdoor electrically controlled blinds, Hansgrohe, Laufen, Hüppe and Riho bathroom sanitary ware and fittings, preparation for air-conditioning and smart home system. A cellar has to be purchased at extra cost; possibility to purchase also a **parking space in a guarded underground garage**. The complex will also offer a private landscaped park, fitness facilities with river views and representative social premises suitable for celebrations, BBQs and other events. The high level of security will be complete with a guarded central entrance to the building, concierge service, 24/7 security and CCTV system.

In the vicinity of the project you can find full services and amenities - kindergartens, schools, several cafes and restaurants, shops, a fitness center, golf course and other opportunities for relaxation and for active recreation. 3-minute walk away from a tram stop providing direct connections to the nearby Vltavská and Palmovka metro stations, and to the center.

The project includes 1 to 6-bedroom units on various floors. For more information and a list of units available, please contact our office. Interior 310.6 m<sup>2</sup>, terraces 11.8 + 17.3 + 113.9 + 37.0 + 82.3 m<sup>2</sup>.