



House Six-bedroom (7+kk)

Sold

282 m², Prague 5, Slivenec, Na Čisté





House Six-bedroom (7+kk)

Sold282 m², Prague 5, Slivenec, Na Čistém

Total area	282 m ²
Plot	550 m ²
Foot print	125 m ²
Garden	425 m ²
Floor area	232 m ²
Terrace	50 m ²
Parking	1 garage and 1 outdoor parking space
Garage	Yes
Cellar	-
PENB	B
Reference number	24102

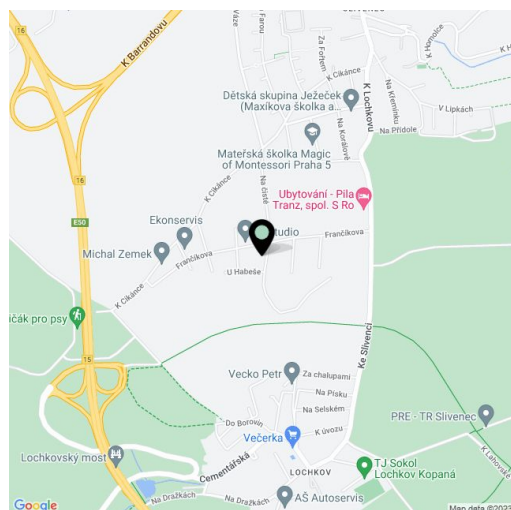
Newly built, low-energy family house with a fireplace, bright interior and a terrace, situated on a very quiet and peaceful street in Slivenec, Prague 5. The location offers basic amenities, close proximity to nature and good accessibility to the city center and to the airport.

Dominant feature of the ground floor is the living room with fireplace, preparation for a kitchen and **floor-to-ceiling sliding windows** leading to the terrace and to the garden. On the same floor there is also a guest bedroom, bathroom with shower and toilet, utility room, storage room, hall with space for built-in wardrobes, and a **garage for one car**. The first floor consists of 3 bedrooms (one of them with access to the terrace), bathroom with bathtub and shower, separate toilet, generous closet, and another storage room.

Amenities include high-quality laminate flooring, plastic windows with triple glazing, **doors with concealed hinges**, underfloor heating, electric boiler, preparation for a security system, suspended ceilings with spotlights. Commissioning took place in 2016. There is one garage and one outdoor parking place.

In Slivenec you can find a kindergarten and elementary school, tennis hall, restaurants, cafes and other services. The house is a 5-minute walk from the bus stop with direct connection to Anděl. Good transport accessibility is ensured also by a nearby ramp to the Prague ring road and the D5 and D1 highways.

Interior 182 m², terrace 50 m² built-up area 125 m², garden 425 m², plot 550 m².

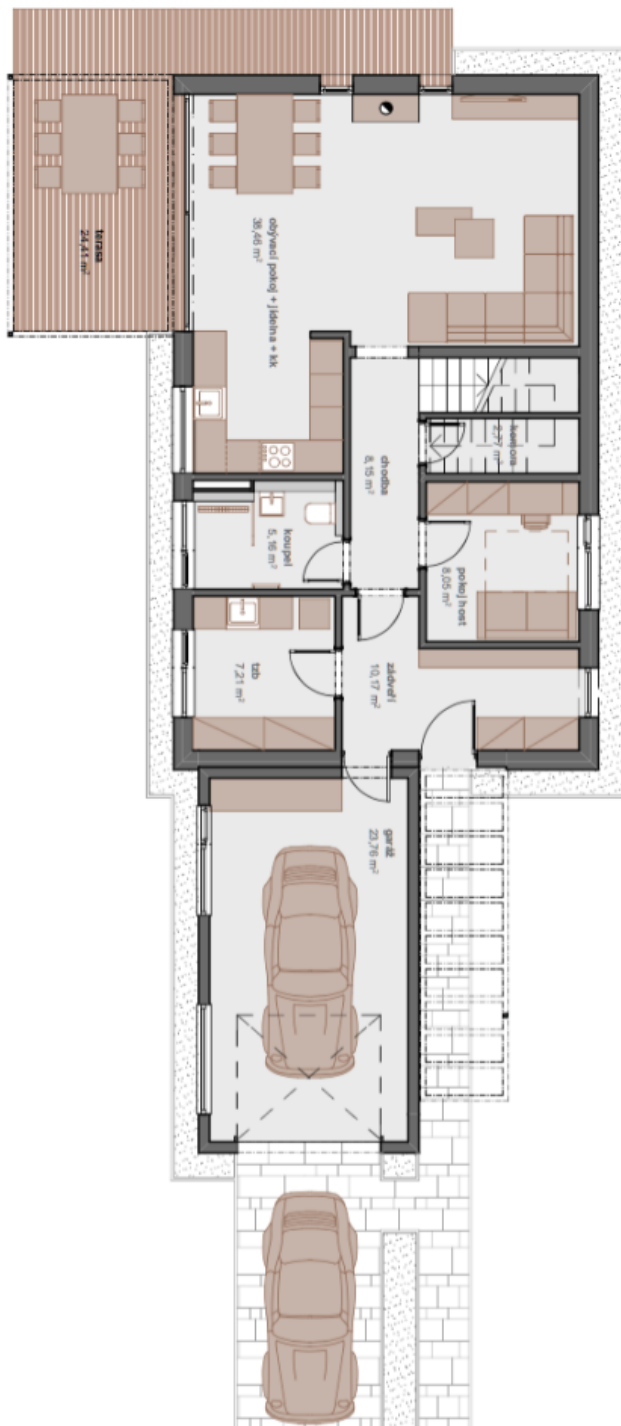




House Six-bedroom (7+kk)

282 m², Prague 5, Slivenec, Na Čisté

Sold





House Six-bedroom (7+kk)

282 m², Prague 5, Slivenec, Na Čisté

Sold

