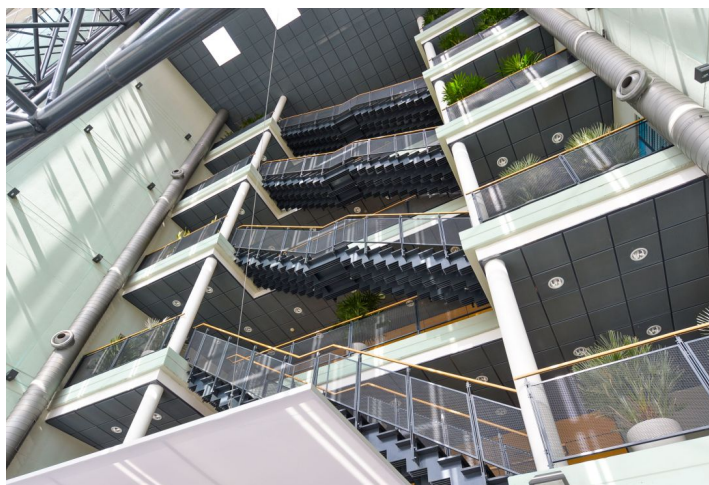
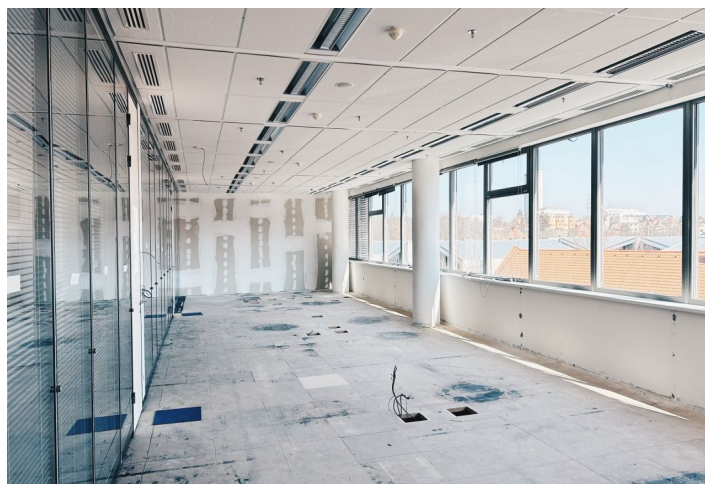




Office space

Prague 6, Vokovice, Evropská

€ 14.50 / m² | CZK 364 / m²



**Office space**

Prague 6, Vokovice, Evropská

€ 14.50 / m² | CZK 364 / m²

Service price	90 CZK monthly per m ²
Available area	1 100 m ²
Cellar	-
Parking	EUR 80 / ps / month
PENB	G
Reference number	24141

Office space for lease on the 5th floor of a modern A class office building situated in Prague 6. The building offers a perfect working environment to suit a variety of tenants' needs, combining state-of-the-art technologies with modern functional design for forward thinking companies.

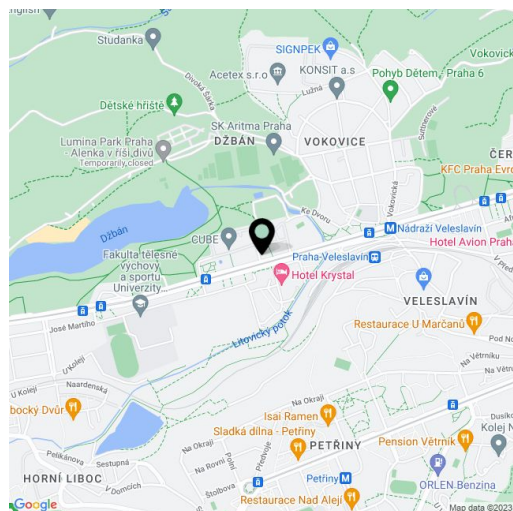
Location:

The building is located northwest of the city center of Prague with excellent visibility from Evropská Street and great accessibility to the international airport. Both tram and bus stops are located nearby and the Nádraží Veleslavín metro station (line A) is a 5-minute walk away. Easy access to the Prague ring road, very well connected to D5 and R7 highways. Nearby are some of Prague's prime residential areas as well as the protected forests and valleys of Šárka.

Features and Services:

- Flexible office space
- Suspended ceilings
- Raised floors
- Sprinklers
- Air-conditioning
- Open able windows
- Optical cable
- Central reception
- 3 modern lifts
- 24/7 Security service
- Magnetic card access
- Professional property management onsite
- Canteen onsite
- Underground parking

Rental and service charges listed without VAT. Lessee pays no commission.





Office space

Prague 6, Vokovice, Evropská

€ 14.50 / m² | CZK 364 / m²

