



## Apartment One-bedroom (2+kk)

Rented

66 m<sup>2</sup>, Prague 5, Smíchov, Holečkova





## Apartment One-bedroom (2+kk)

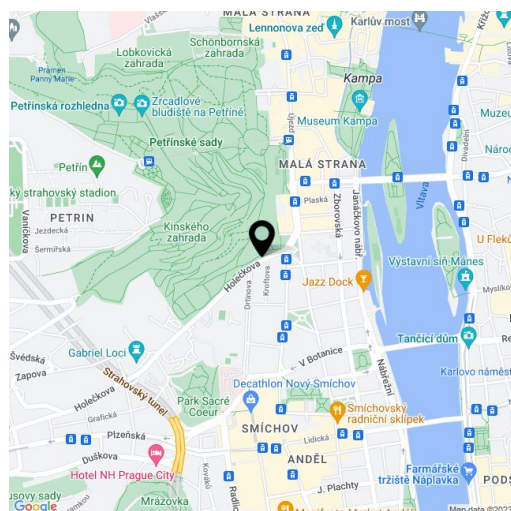
**Rented**66 m<sup>2</sup>, Prague 5, Smíchov, Holečkova

Total area	72 m <sup>2</sup>
Floor area*	66 m <sup>2</sup>
Balcony	6 m <sup>2</sup>
Parking	On-site garage parking space.
Garage	Yes
Cellar	Yes
PENB	C
Reference number	24146
Available from	Immediately

Contemporary 1-bedroom flat with a balcony and wonderful far reaching views of Prague, on the fifth floor of the modern project Residence Sacre Coeur 2. Located in Hřebenky, a highly sought after residential area in close vicinity of the Kinského Garden, Petřín hill and Nový Smíchov shopping and entertainment center. The residence offers 24-hour reception, underground garage parking and camera surveillance system. Quiet area with bus connections, convenient to Újezd trams, Anděl metro, and the French School, quick access to the city center. Bus stop in front of the building, direct connection to the airport.

The interior includes living room with a fully fitted open plan kitchen and floor-to-ceiling windows, one bedroom, en-suite shower bathroom with toilet, a guest toilet with laundry area, and entry hall. The balcony is accessed from the bedroom and the adjoined corridor.

Oak floors, security entry door, French windows, washer, dishwasher, video entry phone, 7 m<sup>2</sup> cellar. One garage parking space included. Deposit for common building charges, water, heating and parking CZK 4717 per month. Deposit for electricity CZK 1000 per month. Available from November 2019.



\* Area of the unit according to the Civil Code. The area consists of the sum total area of the entire unit bounded by perimeter walls.



# Apartment One-bedroom (2+kk)

66 m<sup>2</sup>, Prague 5, Smíchov, Holečkova

Rented

**SACRE COEUR 2 | C5.3 | 2+kk | 5. podlaží**  
 developer: společnost SATPO

**cena vč. DPH: na vyžádání**

část	m <sup>2</sup>
01 vstupní hala	5.0 m <sup>2</sup>
02 obývací pokoj + KK	29.1 m <sup>2</sup>
03 chodba	2.8 m <sup>2</sup>
04 pokoj	17.9 m <sup>2</sup>
05 WC	3.1 m <sup>2</sup>
06 koupelna	4.0 m <sup>2</sup>
průčky, sloupy a šachty	3.6 m <sup>2</sup>
obývací plocha	65.5 m <sup>2</sup>
00 sklep	7.4 m <sup>2</sup>
uzitná plocha	72.9 m <sup>2</sup>
07 terasa	6.0 m <sup>2</sup>
celková plocha	78.9 m <sup>2</sup>

garáže, sklepy, sklady G1.27  
 garážové stání S02.34  
 sklep

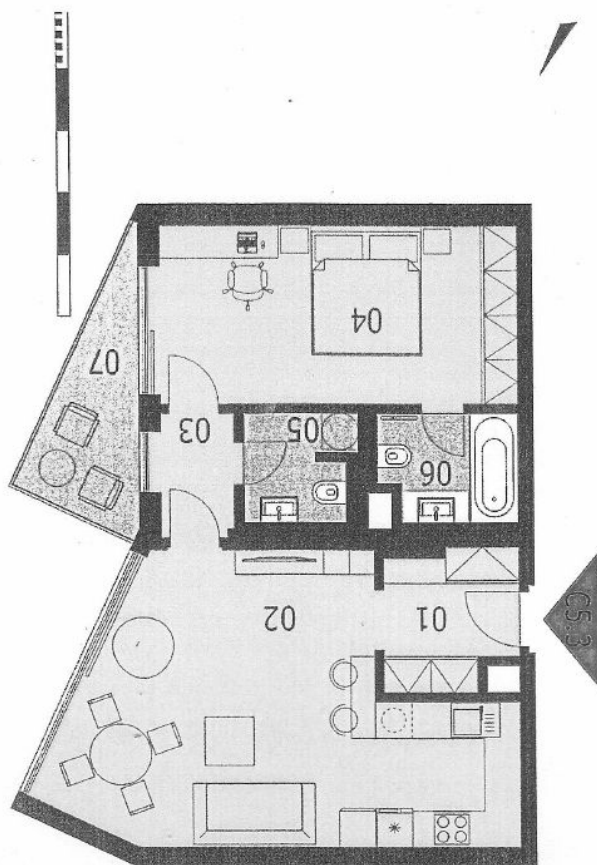
Příloha č.



## Apartment One-bedroom (2+kk)

Rented

66 m<sup>2</sup>, Prague 5, Smíchov, Holečkova



SACCOEUR 2 | C5.3 | 2+kk | 5. podlaží  
dever: společnost SATPO