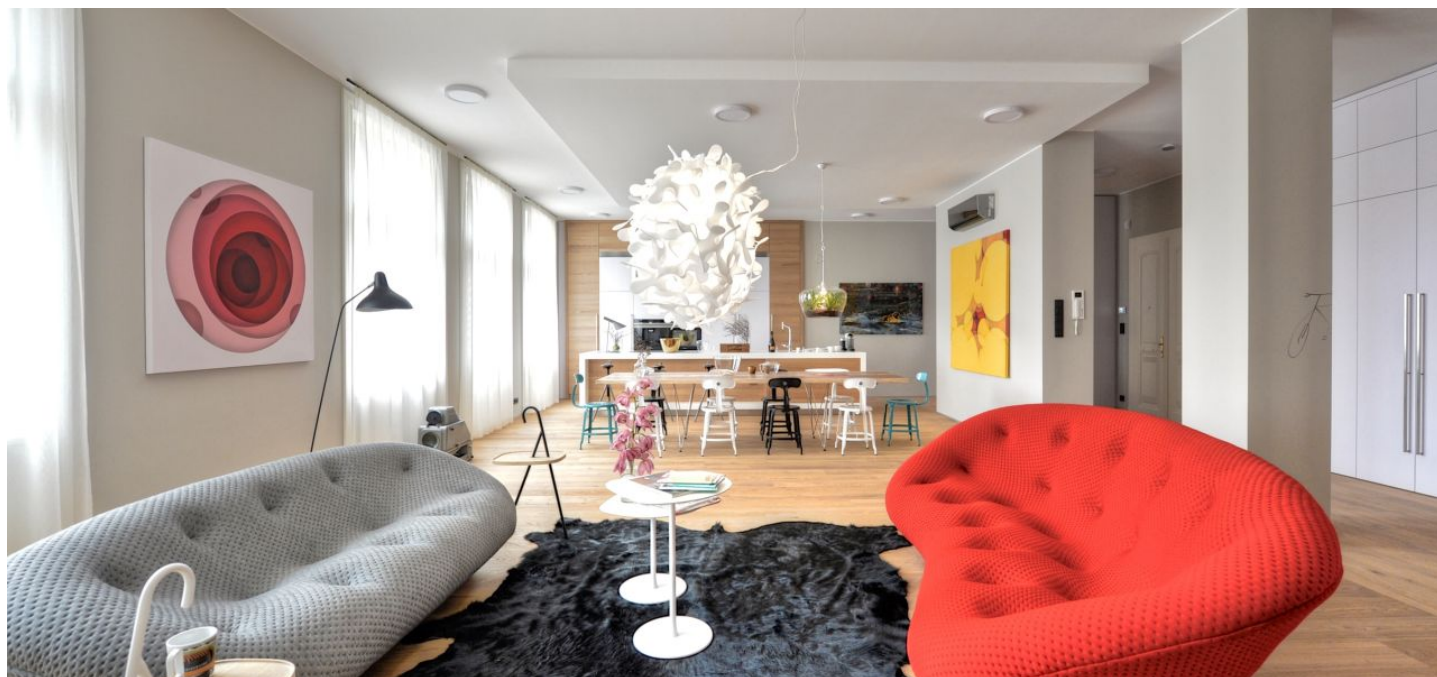




Apartment Five-bedroom (6+kk)

Rented

208 m², Prague 1, Josefov, Pařížská





Apartment Five-bedroom (6+kk)

Rented

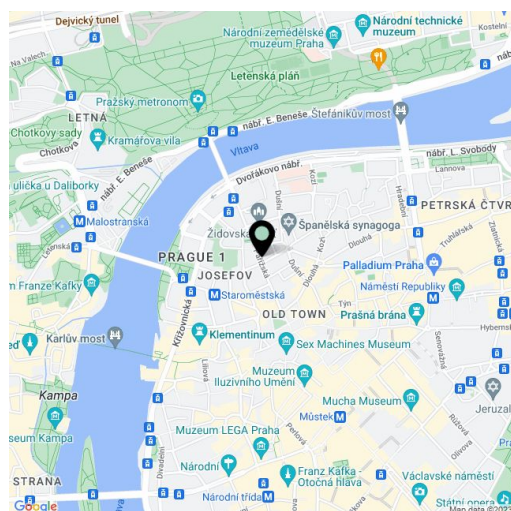
208 m², Prague 1, Josefov, Pařížská

Total area	212 m ²
Floor area*	208 m ²
Balcony	4 m ²
Parking	-
Cellar	-
Service price	Common building charges CZK 20,000/month. Electricity - transferred to the tenant.
PENB	D
Reference number	24172
Available from	Immediately

This unique unfurnished luxury apartment designed by the Czech SAD architectural studio boasts one of the most prestigious addresses in Prague. This completely refurbished apartment is situated on the 4th floor of a meticulously reconstructed stately Art Nouveau building with an elevator, in the heart of the historic center, within instant reach of high-end boutiques, shops, and restaurants. Located a few minutes from Old Town Square and the Vltava riverbank, within easy reach of most of Prague's historic sights.

The playful interior features a huge living room with a kitchen and dining area with a dining table that seats ten (total of 75 sq. m.), four bedrooms, five bathrooms, a study, an entrance hall, and two balconies.

Air-conditioning, high ceilings, many built-in wardrobes and storage, hardwood parquet floors, tiles, wooden windows, curtains, alarm. The apartment is offered unfurnished.



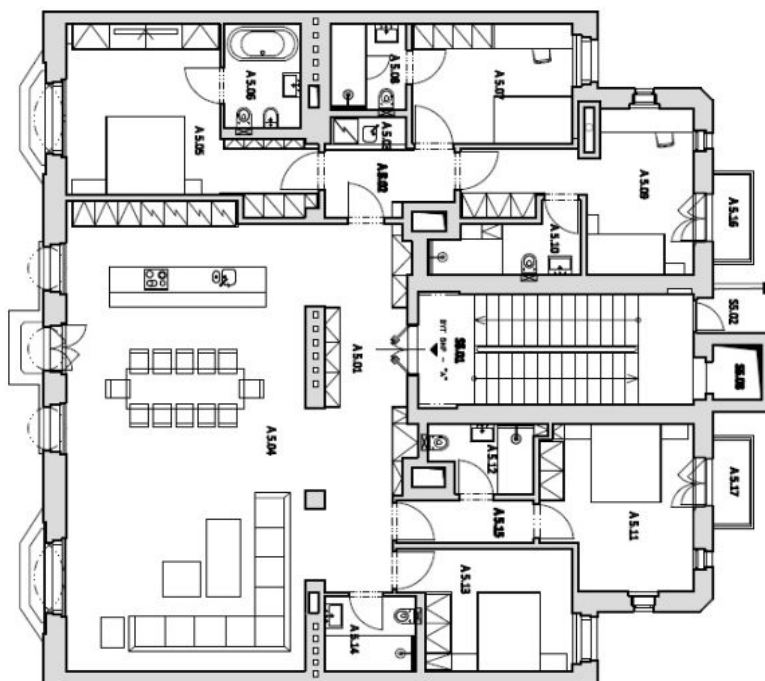
* Area of the unit according to the Civil Code. The area consists of the sum total area of the entire unit bounded by perimeter walls.



Apartment Five-bedroom (6+kk)

208 m², Prague 1, Josefov, Pařížská

Rented



PŮDORYS 5.NP

Č.	NÁZEV	m ²
SPOLÉCNÉ PROSTORY		
SS.01	SCHODIŠTĚ	19,9
SS.02	LOŽNĚ	2,3
SS.03	VÝTĚH	1,8
BRŤ SNP "A"		
AS.01	CHODBA	19,3
AS.02	CHODBA	6,0
AS.03	ÚKLIDOVÁ KOMORA	1,3
AS.04	OBÝV./POKOJ + KUCHYŇE + JÍDELNA	74,8
AS.05	LOŽNICE	21,6
AS.06	KOUPELNA + WC	5,3
AS.07	LOŽNICE	12,4
AS.08	KOUPELNA + WC	4,3
AS.09	LOŽNICE	16,0
AS.10	KOUPELNA + WC	5,3
AS.11	LOŽNICE	15,3
AS.12	KOUPELNA + WC	4,4
AS.13	LOŽNICE	12,5
AS.14	KOUPELNA + WC	4,4
AS.15	CHODBA	4,1
AS.16	BALKON	2,3
AS.18	BALKON	2,3