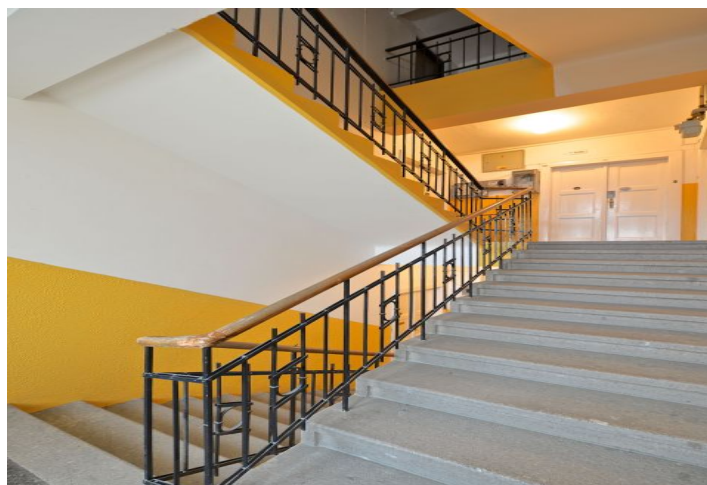




## Apartment Studio (1+kk)

27 m<sup>2</sup>, Prague 6, Břevnov, Šlikova

Sold





## Apartment Studio (1+kk)

27 m<sup>2</sup>, Prague 6, Břevnov, Šlikova

Sold

Total area	27 m <sup>2</sup>
Parking	-
Cellar	-
PENB	G
Reference number	24283

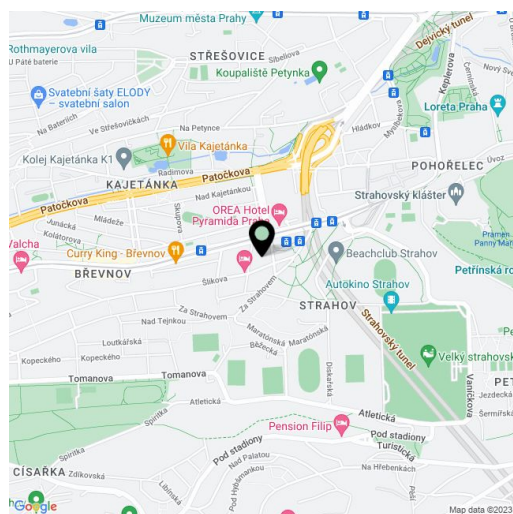
Attractive and bright studio boasting beautiful views, situated on the 5th floor of a renovated residential building only a few-minutes' walk from the Prague Castle complex. Sought after location with excellent amenities and easy access to the metro, to the center and to the airport in Ruzyně.

The layout consists of a living room with a made-to-measure, modern kitchen, bathroom with shower, toilet and window, and a hallway with built-in wardrobes.

Features include wooden floating floors, ceramic tiles, plastic windows, Junkers combined gas boiler, Electrolux kitchen appliances. The building was completely renovated in 2000, there is no elevator.

Nearby you can find the **Kajetánka Park**, nursery and primary schools (including international school), supermarket, cafes, restaurants, Dlabáčov cinema, sports facilities at Strahov, Petynka swimming pool.

Interior 27 m<sup>2</sup>.



\* Area of the unit according to the Civil Code. The area consists of the sum total area of the entire unit bounded by perimeter walls.