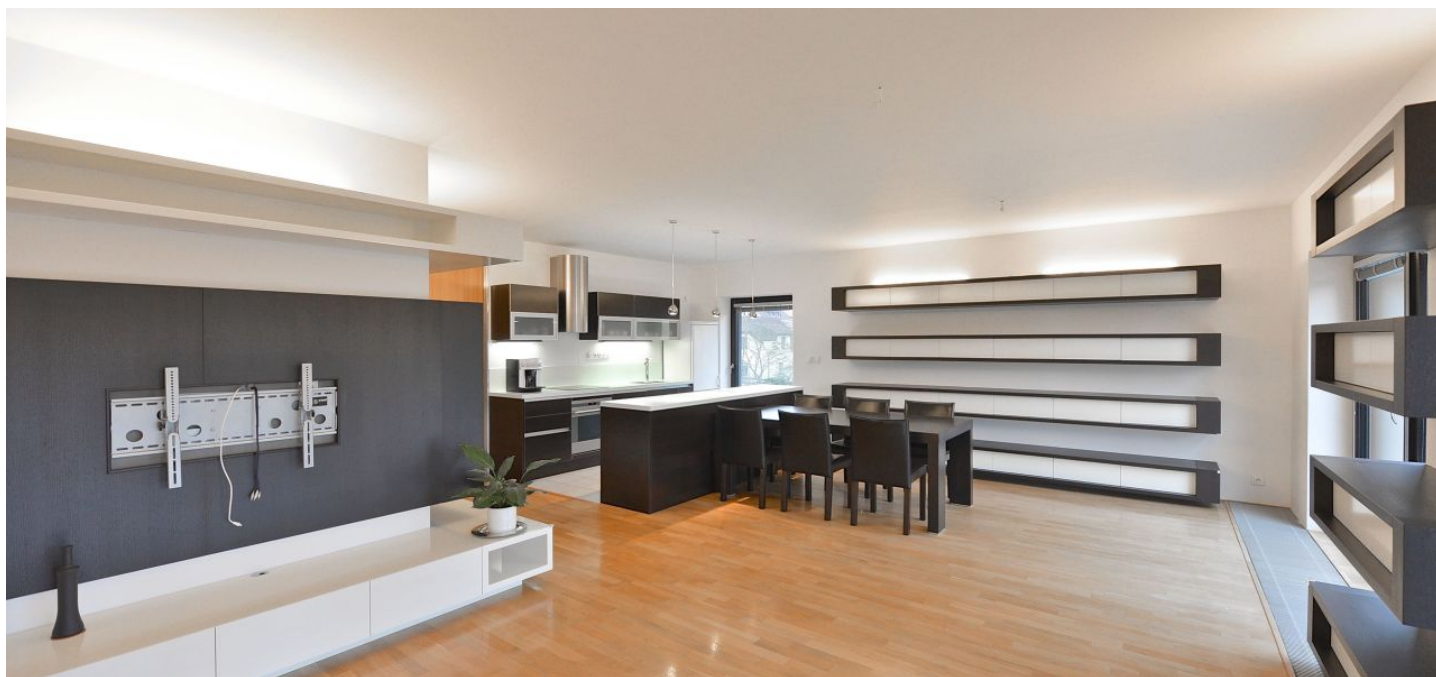




Apartment Three-bedroom (4+kk)

Rented

124 m², Prague 6, Vokovice, Nobelova





Apartment Three-bedroom (4+kk)

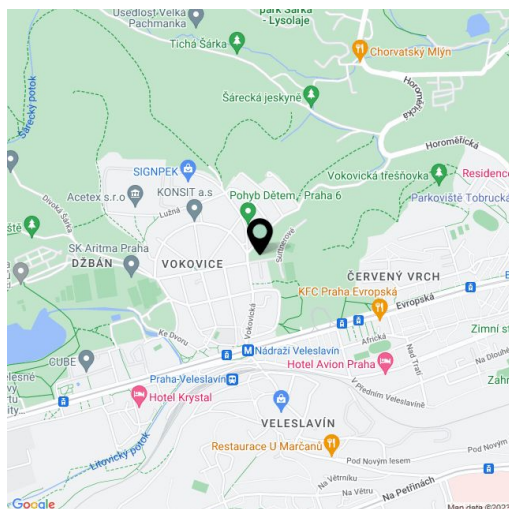
Rented124 m², Prague 6, Vokovice, Nobelova

| | |
|------------------|-----------------------------|
| Total area | 136 m ² |
| Floor area* | 124 m ² |
| Balcony | 12 m ² |
| Parking | One parking space included. |
| Garage | Yes |
| Cellar | Yes |
| PENB | C |
| Reference number | 24363 |
| Available from | Immediately |

Modern 3-bedroom 2-bathroom flat with 2 balconies and green views, on the second floor in the recently built development Na Krutci, designed by Kuba & Pilař architectural studio, with 24-hour reception and security, sports center and tennis court. Convenient to the airport and international schools in Prague 6, with quick connections to the city center, close to Šárka protected natural preserve. Full amenities in the area, five min. to Nádraží Veleslavín tram stops and metro station.

The interior includes living room with a fully fitted open kitchen and balcony, master bedroom with an en-suite bathroom (walk-in shower, toilet) and balcony, two more bedrooms, family bathroom (bathtub, walk-in shower), guest toilet with utility area, and entry hall with built-in wardrobes.

Wooden floors, large French windows, built-in storage, security entry door, outdoor blinds, gas boiler, washer, dishwasher, induction cooktop, basic dishes, video entry phone, spacious basement storage unit, lift. One garage parking space and adjacent storage included. Common building charges, reception, security, water and parking CZK 7000/month. Gas and electricity are billed separately.



* Area of the unit according to the Civil Code. The area consists of the sum total area of the entire unit bounded by perimeter walls.



Apartment Three-bedroom (4+kk)

Rented

124 m², Prague 6, Vokovice, Nobelova

