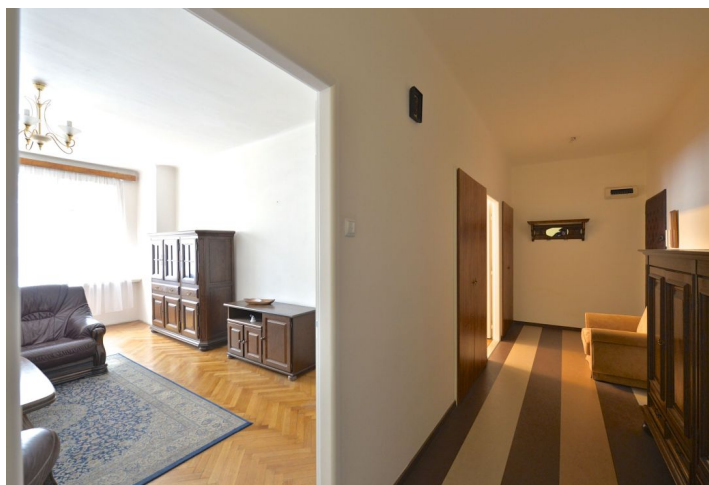




Apartment One-bedroom (2+1)

Rented

88 m², Praha 1, Nové Město, Opatovická





Apartment One-bedroom (2+1)

Rented

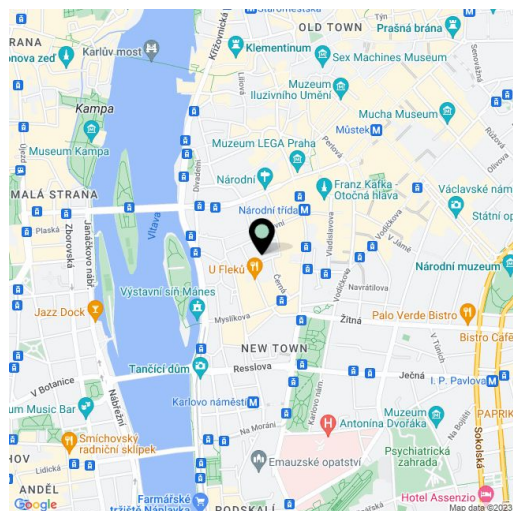
88 m², Praha 1, Nové Město, Opatovická

Total area	88 m ²
Parking	-
Cellar	-
PENB	G
Reference number	244
Available from	Immediately

Partially reconstructed furnished 1-bedroom flat situated on the third floor of a well kept renovated residential building with lift right in the Prague city center. Quiet street just steps from the Vltava embankment and the National Theatre, with multiple tram connections, a few min. walk from Národní třída metro station.

The interior includes one bedroom, living room, a fully fitted eat-in kitchen, an adjacent study (or guest bedroom), bathroom with tub, a separate toilet, storage room, and entrance hall with built-in wardrobes.

Preserved original details, large windows, solid wood parquet floors, marmoleum, gas heating, washing machine, dishwasher, cellar, shared balcony in the mezzanine of the building. Can be unfurnished. Deposit for common building charges, water and heating CZK 2800/month for one person (CZK 530 for extra person). Electricity is billed separately.



* Area of the unit according to the Civil Code. The area consists of the sum total area of the entire unit bounded by perimeter walls.