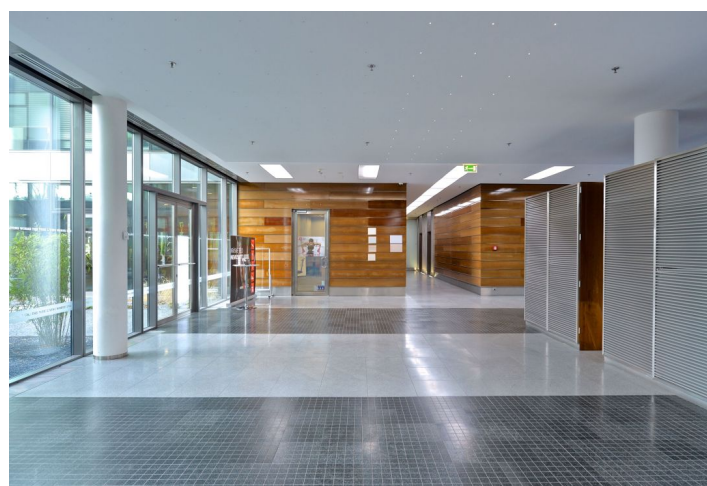
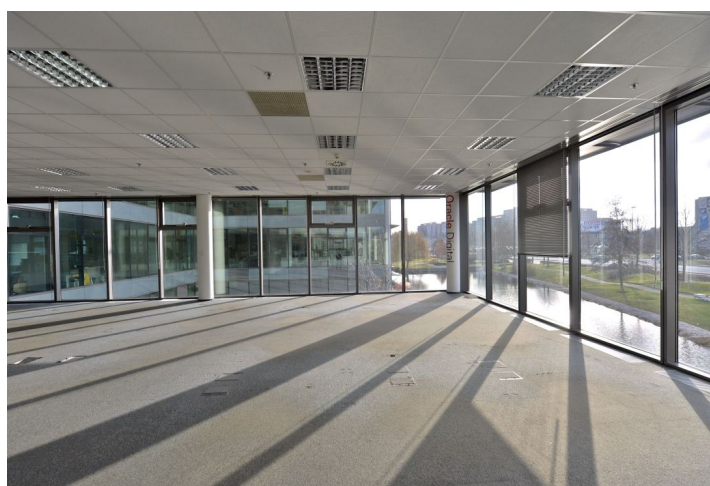
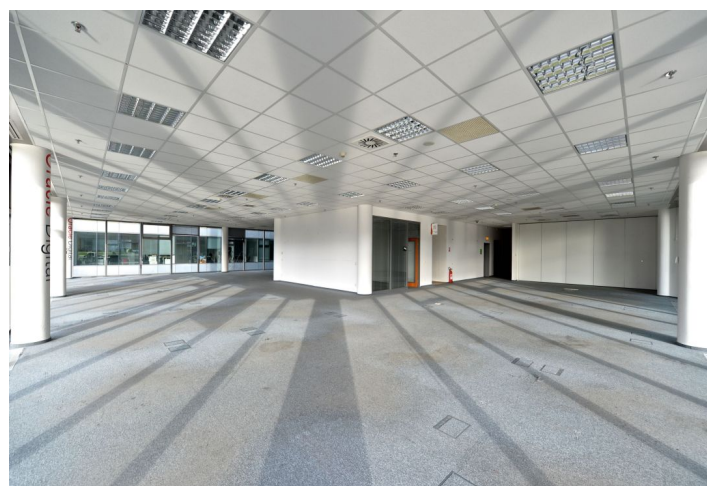
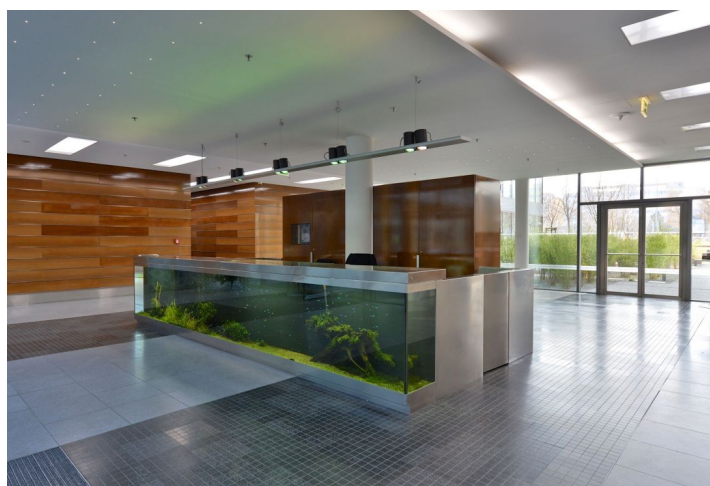




Office space

Praha 4, Chodov, V Parku

€ 15.20 - 15.75 / m² | CZK 384 - 398 / m²



**Office space**

Praha 4, Chodov, V Parku

€ 15.20 - 15.75 / m² | CZK 384 - 398 / m²

Service price	159 CZK monthly per m ²
Available area	330 m ²
Cellar	-
Parking	EUR 110 / ps / month
PENB	G
Reference number	24406

Office space for lease on the 1st floor in campus-style office community business park. The site includes 12 state-of-the-art superior-standard buildings. The buildings are situated in a landscaped garden that consists of carefully selected trees, plants, and grasses and a network of streams, fountains, and pools. Atrium gardens and vestibules connect each building with the outside garden and create a unique office environment.

Location:

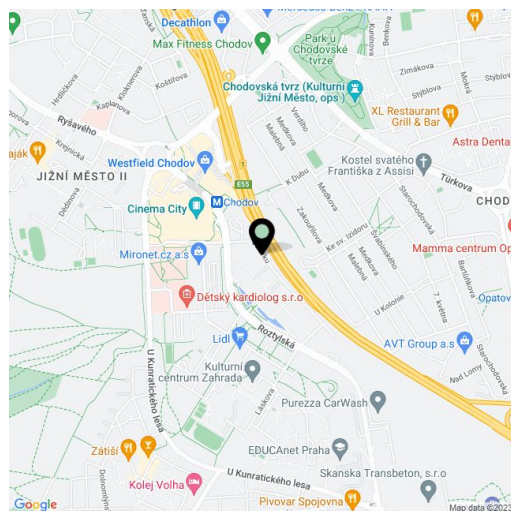
The project is situated in Prague 4—the Czech capital's fastest growing big business and retail destination—adjacent to the Prague-Budapest-Vienna highway and 50 m from the Chodov metro station (line C) and transportation hub. The site is also located next to one of Prague's most ambitious retail-entertainment projects: the Chodov shopping center that forms an integral part of this vibrant new city quarter.

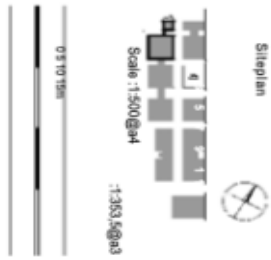
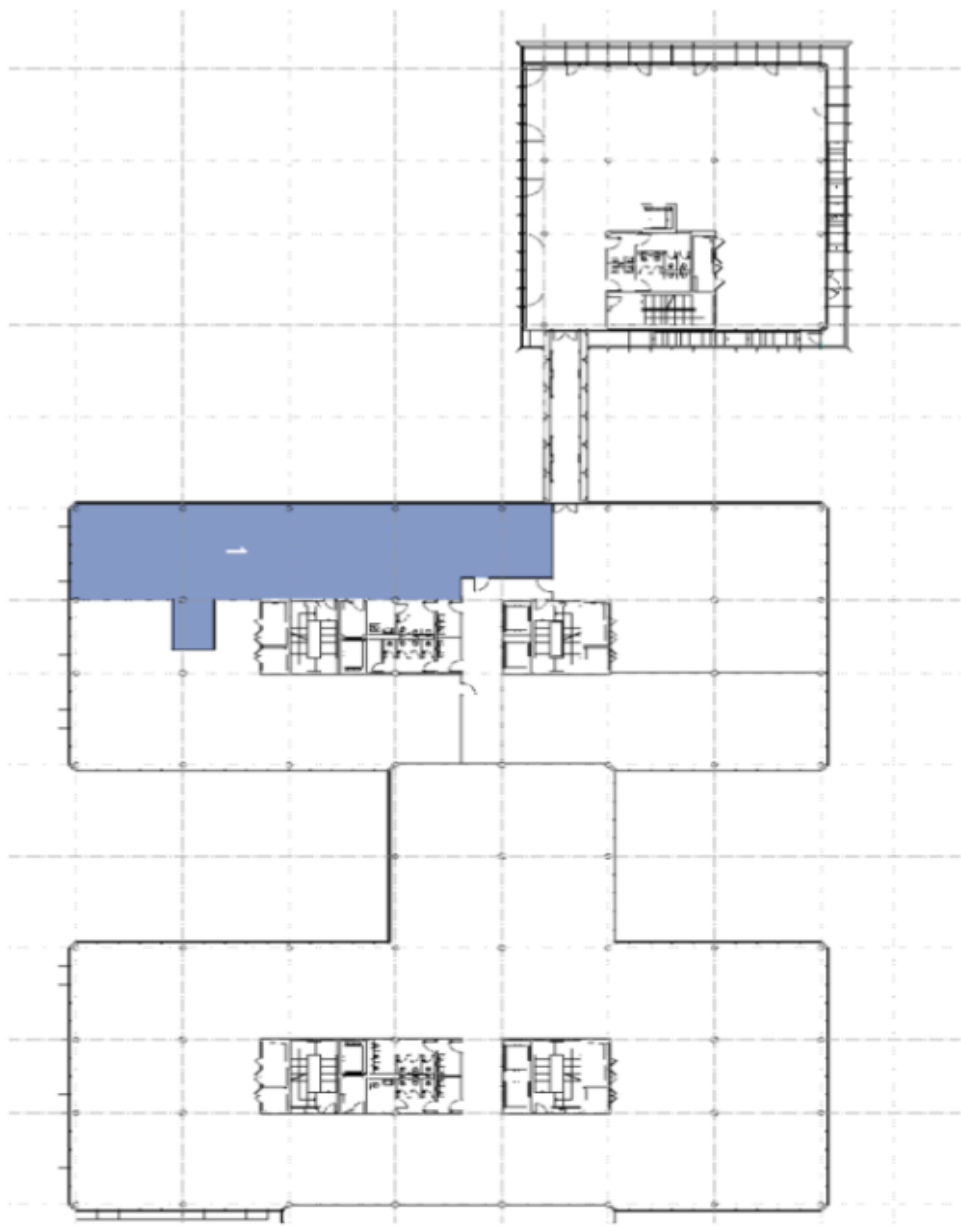
Features and Services:

- High-speed broadband fiber optic connections
- Shared lobby with a reception
- 24/7 access
- High-speed and service
- Elevators
- Secured networks
- Air conditioning
- Raised floors
- Lighting

Images might not accurately reflect the current state of the premises.

Rental and service charges listed without VAT. Lessee pays no commission.





Unit	Size
1	312 m ²

Buildings 01,03
1st Floor (2.NP)