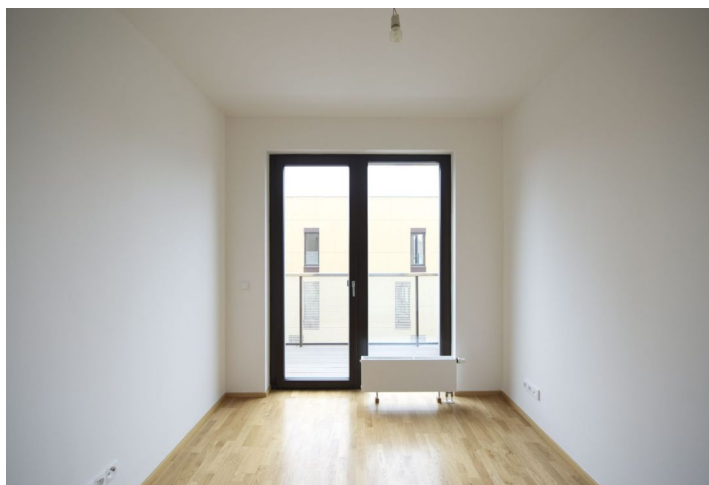




Apartment One-bedroom (2+kk)

Rented

66 m², Prague 4, Michle, Baarova





Apartment One-bedroom (2+kk)

Rented

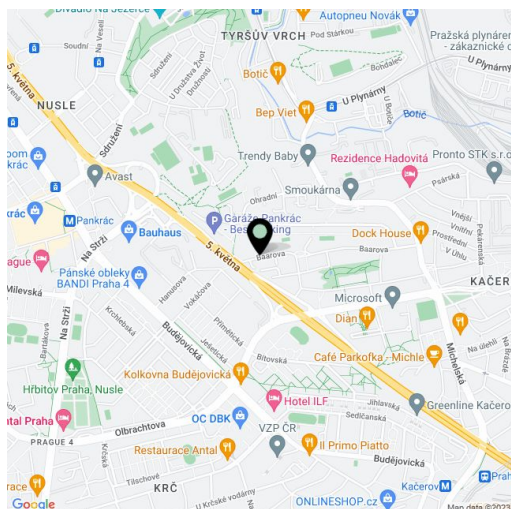
66 m², Prague 4, Michle, Baarova

Total area	70 m ²
Floor area*	66 m ²
Balcony	4 m ²
Parking	Parking available.
Garage	Yes
Cellar	Yes
PENB	G
Reference number	24471
Available from	Immediately

Brand 1-bedroom flat with a balcony situated on the 4th floor with lift in a new residential development with 24-hour reception, security, new park, children's playground and underground parking. Location with full range of amenities, near the BB Centrum and Brumlovka multipurpose centers, with bus connections to Budějovická and Pankrác metro stations and quick access to the city center.

The interior includes living room with a fully fitted open kitchen, one bedroom with a bathroom (bath tub, bidet, toilet) and walk-in closet, guest toilet, laundry room, and entry hall. The balcony is accessible from both main rooms.

Wood floors and tiles, built-in wardrobes, security door, dishwasher, microwave, audio entry phone. Cellar, chip entry to the building. Parking space available for CZK 2,500/month. Monthly deposit for services CZK 6,300. Electricity is billed separately. The photos are taken from a similar apartment.



* Area of the unit according to the Civil Code. The area consists of the sum total area of the entire unit bounded by perimeter walls.



Apartment One-bedroom (2+kk)

Rented

66 m², Prague 4, Michle, Baarova



1 2 3 4 5 6 7 8