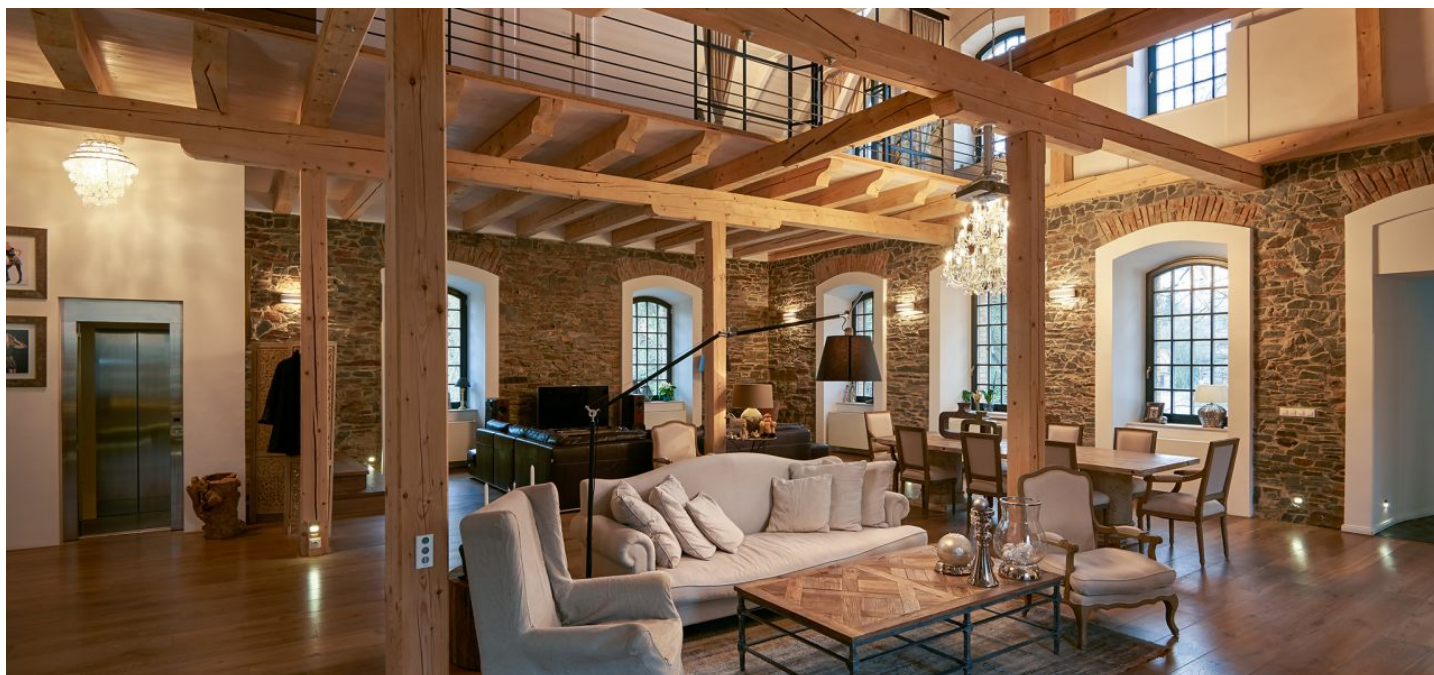




House Seven-bedroom (8+1)

Ask for price

1197 m², Praha-západ, Okoř, Okoř





House Seven-bedroom (8+1)

[Ask for price](#)1 197 m², Praha-západ, Okoř, Okoř

Plot	6 049 m ²
Foot print	1 962 m ²
Garden	4 087 m ²
Parking	Yes
Cellar	-
PENB	G
Reference number	24474

Unique opportunity to purchase a historic mill, directly adjacent to the ruins of Okoř Castle - dating back to the 15th century. The whole property was completely reconstructed in 2012, keeping plenty of the original features combined with modern materials and technologies, which created a stunning, exceptional atmosphere.

The border of the 6 049 m² plot is formed by a forest, castle wall, and a creek, separating the property from the road. There are **two main buildings and a lovely fruit garden, partially terraced**. Everything is positioned around the central courtyard which opens toward the original entrance gate from the 19th century.

The first structure has 2 units boasting a **large terrace with stunning views** and an **elevator** connecting the upper flat with the ground floor. There is a total of 3 lounges, 2 kitchens and 5 bedrooms. The other building features two floors and is suitable to be used for accommodation, generous family living, or as a private art gallery. In the garden you can find a **summer gazebo**.

The facade of the property is insulated by a Baumit open system which provides a perfectly natural look **preserving all the original exterior features**. There is a **Jacuzzi**, underfloor and gas heating, hardwood floors, wooden double or triple-glass windows, glass entrance door, alarm and CCTV, gas boiler for each unit (Vaillant, Buderus), fully fitted Hanák kitchen, Villeroy & Boch sanitary ware and fixtures. The purchase price includes the Snel Furniture shown in photographs.

The house is located in a romantic setting near the ruins of the Okoř Castle, boasting absolute peace and privacy. Nearby you can find bus stops with connections to the Nádraží Veveslavín and Dejvická metro stations. All civic amenities are located in nearby Velké Přílepy, about 7 minutes away by car.

Interior 1 197 m², built-up area 1 962 m², garden 4 087 m², plot 6 049 m².

