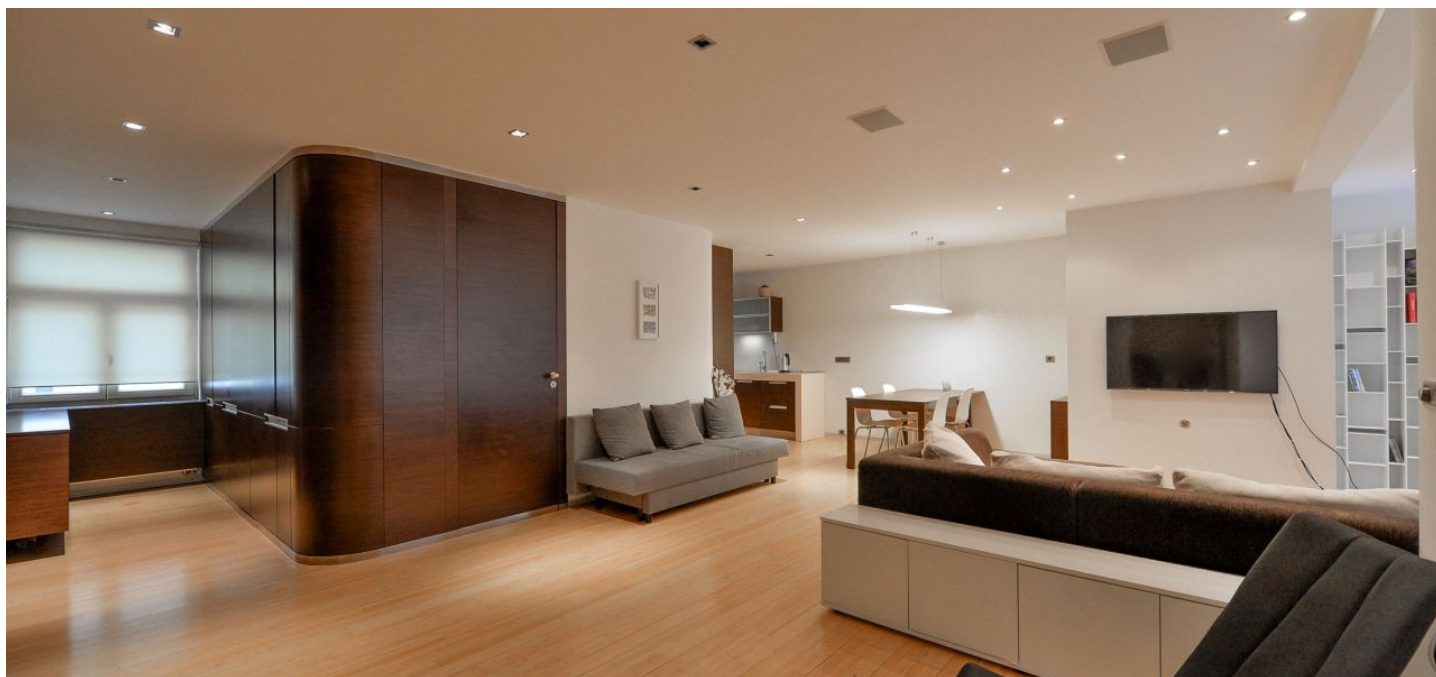




Apartment Two-bedroom (3+kk)

Sold

92 m², Prague 6, Břevnov, Šlikova





Apartment Two-bedroom (3+kk)

Sold92 m², Prague 6, Břevnov, Šlikova

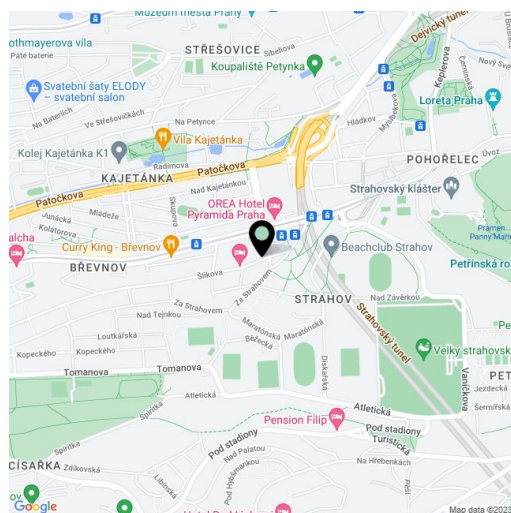
Total area	120 m ²
Floor area*	92 m ²
Terrace	28 m ²
Parking	Garage parking space at extra cost.
Garage	Yes
Cellar	Yes
Service price	5 200 CZK monthly
PENB	G
Reference number	24546

Bright and quiet apartment after a complete reconstruction boasting a lovely large, south-facing terrace, on the 3rd floor of a renovated residential building with a lift. Located within walking distance of Prague Castle and Kajetánka and Ladronka parks, in a sought-after area with excellent amenities and easy access to the metro, to the center and to Václav Havel Airport.

The layout offers a living room with a fully equipped kitchen and terrace, 2 bedrooms and a bathroom with bathtub, shower and toilet. Facilities include **bamboo floors**, large-format tiles, **new wooden windows**, interior blinds, fully equipped kitchen with **Miele** appliances, security door, plenty of built-in storage space, suspended ceilings with spotlights, central heating provided by a boiler room in the house. The purchase price includes a **cellar**. Option to buy an onsite garage parking space.

Nearby you can find the Kajetánka Park, nursery and primary schools (including international school), supermarket, cafes, restaurants, Dlabáčův cinema, sports facilities at Strahov, Petynka swimming pool.

Common building charges CZK 5 200 / month.
Interior 91.9 m², terrace 28.3 m², cellar.



* Area of the unit according to the Civil Code. The area consists of the sum total area of the entire unit bounded by perimeter walls.