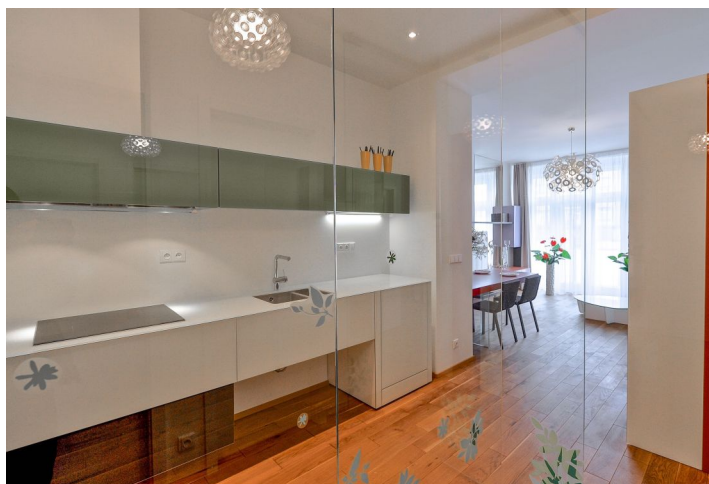




## Apartment One-bedroom (2+kk)

Rented

56 m<sup>2</sup>, Prague 6, Dejvice, Wucherlova





## Apartment One-bedroom (2+kk)

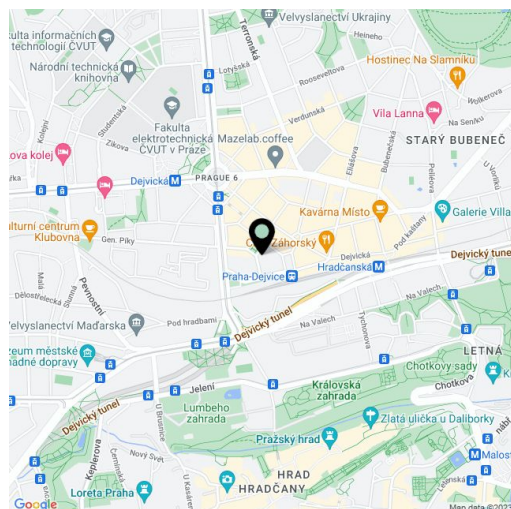
**Rented**56 m<sup>2</sup>, Prague 6, Dejvice, Wucherlova

Total area	59 m <sup>2</sup>
Floor area*	56 m <sup>2</sup>
Balcony	3 m <sup>2</sup>
Parking	Parking can be arranged nearby.
Garage	Yes
Cellar	Yes
PENB	E
Reference number	24563
Available from	Immediately

**Brand new renovated fully furnished 1-bedroom flat with a balcony and lovely views of the adjacent square, on the first floor of completely newly reconstructed 1932 corner building with lift. Located in an attractive part of Prague 6, with full amenities in the area and quick access to the city center - just steps from Dejvická metro and trams. Convenient to the airport and international schools, within walking distance of the Prague Castle and Stromovka Park.**

The interior features a fully fitted kitchen opening into the living room with dining area and balcony access, one bedroom, shower bathroom, a separate toilet, and a glassed in entrance hall.

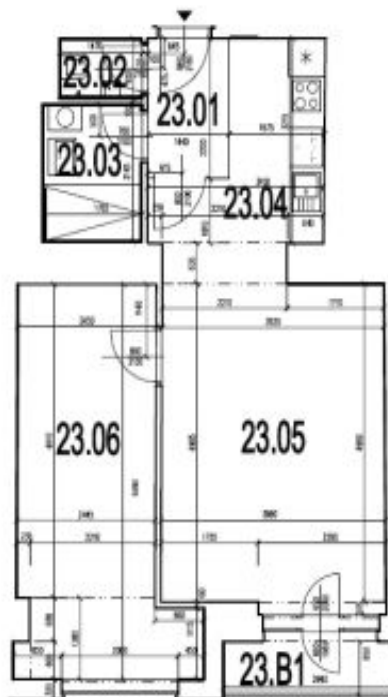
Design furniture and equipment, high ceilings, wooden floors, security entry door, central heating, induction cooktop, dishwasher, basic dishes and kitchenware, video entry phone, cellar. Underground garage parking available in the adjacent square at CZK 4000/month. Deposit for common building charges, water and heating around CZK 2000/month. Electricity is billed separately.



\* Area of the unit according to the Civil Code. The area consists of the sum total area of the entire unit bounded by perimeter walls.



## Apartment One-bedroom (2+kk)

**Rented**56 m<sup>2</sup>, Prague 6, Dejvice, Wuchterlova**Tabulka ploch**

Číslo	Účel místnosti	Plocha(m <sup>2</sup> )
23.01	chodba	3,1
23.02	WC	1,4
23.03	koupelna	3,8
23.04	kuchyně	8,3
23.05	pokoj	20,1
23.06	pokoj	16,0
	svislé nosné a nenosné konstrukce uvnitř jednotky	3,0
<b>Podlahová plocha</b>		<b>55,7</b>
23.B1	balkon	2,9
SK.15	sklepní kóje	1,8
<b>Celková plocha</b>		<b>60,4</b>