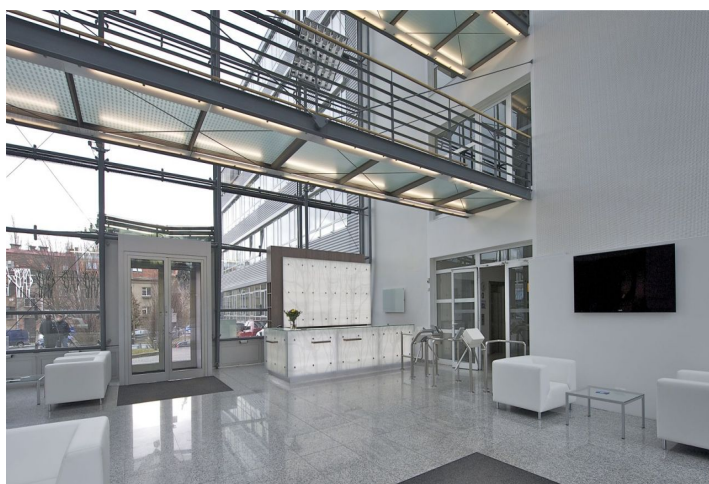




## Office space

Prague 6, Dejvice, Evropská

Rented





## Office space

**Rented**

Prague 6, Dejvice, Evropská

<b>Service price</b>	190 CZK monthly per m <sup>2</sup>
<b>Available area</b>	773 m <sup>2</sup>
<b>Cellar</b>	-
<b>Parking</b>	EUR 80 / ps / month
<b>PENB</b>	G
<b>Reference number</b>	24566

Office space for lease on the 4th floor in an administrative complex which consists of two buildings with four entrances. Building is located near a major summer house and offers a range of services, such as a restaurant, cafe and fitness. There is also a shared terrace for relaxing.

**Location:**

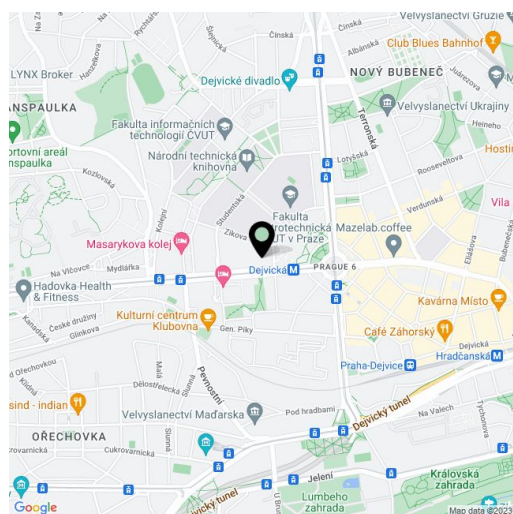
The complex is located on Evropská Street in Prague 6 and is very easy accessible by car and public transport – the Dejvická metro station (line A) is only two tram stops away. There is a tram stop directly outside the building. Easy access to Vaclav Havel Airport Prague and to the city center.

**Features and Services:**

- Main reception lobby with a coffee shop
- 24-hour security/CCTV
- Full-time on-site property management team
- Air conditioning
- Openable windows
- Raised floors/floor boxes
- Suspended ceilings
- Kitchenette and toilets
- Restaurant
- Common garden terrace adjacent to food services
- Full service fitness center (sauna, personal training, group exercise classes, corporate challenge programs)
- Underground parking and parking for visitors

**Available from July, 2023.**

Rental and service charges listed without VAT. Lessee pays no commission.





## Office space

Prague 6, Dejvice, Evropská

Rented

