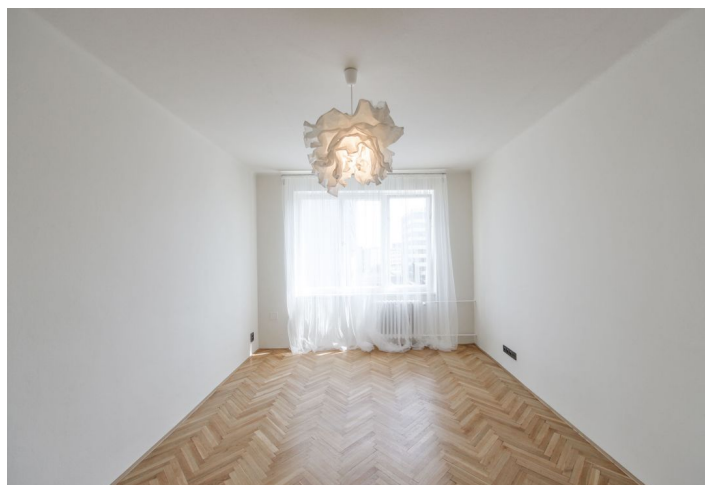




Apartment One-bedroom (2+1)

Rented

55 m², Prague 10, Vršovice, Moldavská





Apartment One-bedroom (2+1)

Rented

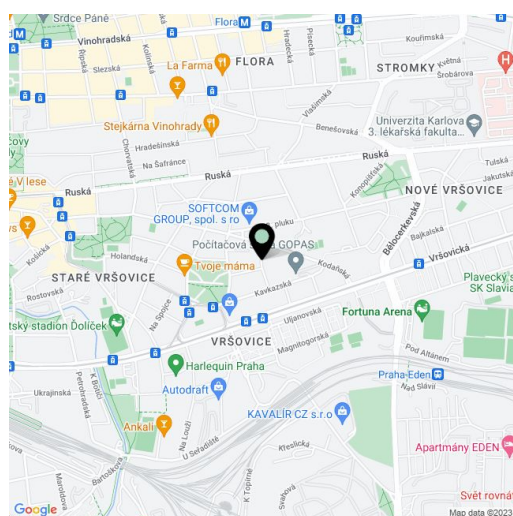
55 m², Prague 10, Vršovice, Moldavská

Total area	55 m ²
Parking	-
Cellar	-
PENB	G
Reference number	24608
Available from	Immediately

Brand new fully reconstructed 1-bedroom flat situated on the fifth floor of a residential building with lift and a green courtyard with a children's playground. Location with full amenities in close vicinity and quick access to the city center, bus and tram connections, a short ride to Náměstí Míru metro station.

The interior features one bedroom with windows facing the green courtyard, a spacious living room, a fully fitted kitchen, shower bathroom, a separate toilet, and entry hall.

Large windows, solid wood parquet floors, tiles, security entry door, central heating, washing machine, dishwasher, balcony in the mezzanine of the building. East / West orientation. Deposit for common building charges, water and heating around CZK 2700 per month. Electricity is billed separately.



* Area of the unit according to the Civil Code. The area consists of the sum total area of the entire unit bounded by perimeter walls.