



## Apartment One-bedroom (2+kk)

Rented

66 m<sup>2</sup>, Prague 1, Nové Město, Soukenická





## Apartment One-bedroom (2+kk)

Rented

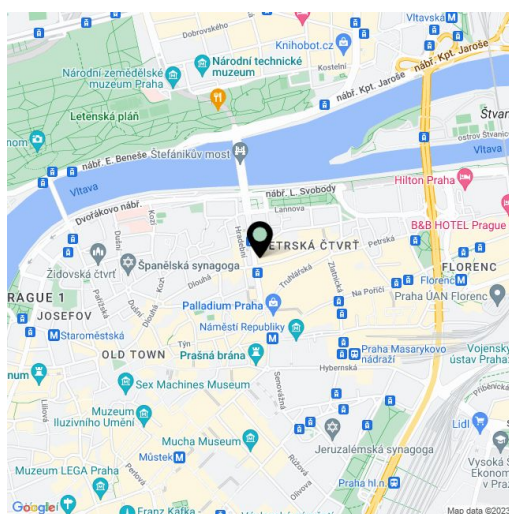
66 m<sup>2</sup>, Prague 1, Nové Město, Soukenická

Total area	66 m <sup>2</sup>
Parking	Courtyard parking available at CZK 5000/month.
Cellar	-
PENB	G
Reference number	24666
Available from	Immediately

**Fully renovated furnished 1-bedroom flat on the first floor of a completely refurbished historic building with a new lift and parking. Situated just moments from Náměstí Republiky Square with metro, trams and the Palladium and Kotva shopping malls, in the very heart of Prague. The central location boasts rich cultural and social venues and full amenities.**

The interior features a comfortable living room with dining area and a fully fitted open kitchen, one bedroom with an en-suite bathroom (sink, bathtub with a shower screen, toilet), guest toilet, and entry hall with built-in storage.

Preserved original details, high ceilings, stucco ornaments, hardwood parquet flooring and tiles, security entry door, blackout blinds in the bedroom, independent gas boiler, washer, dishwasher, microwave oven, basic kitchenware, bed linen, TV. One secure parking space in the courtyard available at CZK 5000/month. Deposit for common building charges and water CZK 1500/month. Gas and electricity will be transferred to the tenant. Short term rent possible.



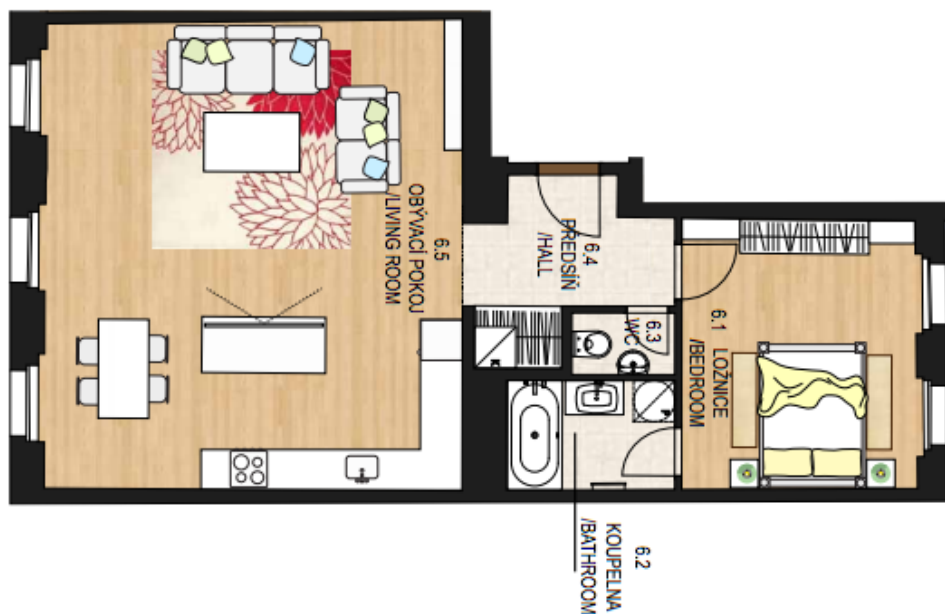
\* Area of the unit according to the Civil Code. The area consists of the sum total area of the entire unit bounded by perimeter walls.



# Apartment One-bedroom (2+kk)

66 m<sup>2</sup>, Prague 1, Nové Město, Soukenická

Rented



JEDNOTKA Č. / UNIT NO. **6** | **2 + KK**

6.1	LOŽNICE / BEDROOM	12,9 m <sup>2</sup>
6.2	KOUPELNA / BATHROOM	3,9 m <sup>2</sup>
6.3	WC	1,4 m <sup>2</sup>
6.4	PŘEDSÍŇ / HALL	6,2 m <sup>2</sup>
6.5	OBÝVACÍ POKOJ / LIVING ROOM	41,4 m <sup>2</sup>
celková užítná plocha / total area of flat		<b>65,8 m<sup>2</sup></b>

SCHEMATICKÝ ŘEZ / SITUAČNÍ SCHÉMA /  
SCHEMATIC SECTION | SITE LAYOUT SCHEME

