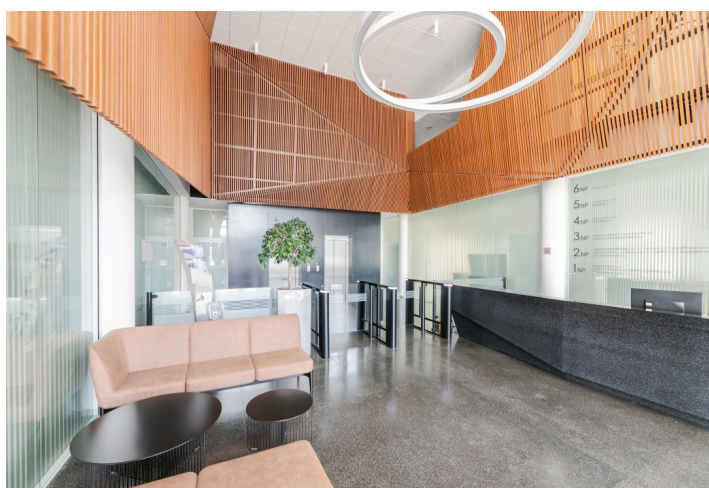




# Office space

Prague 4, Michle, Jemnická

Rented



**Office space**

Prague 4, Michle, Jemnická

**Rented**

<b>Service price</b>	213 CZK monthly per m <sup>2</sup>
<b>Available area</b>	254 m <sup>2</sup>
<b>Cellar</b>	-
<b>Parking</b>	Yes
<b>PENB</b>	G
<b>Reference number</b>	24701

Office space for lease on the 2nd floor in a modern office building from Kordovsky's architectural studio located on the corner of Jemnická and Želetavská streets in Prague 4.

**Location:**

Very good accessibility by car and public transport – the Budějovická and Kačerov metro stations (line C) are just 2 minutes by bus or 8 minutes on foot. A shuttle bus connects the building with the Budějovická metro station. Easy access to Prague's Ring Road and to the D1 highway leading to Brno.

**Features and Services:**

- Central reception
- 24/7 security service
- 24/7 access
- Green rooftop terrace for tenants
- Openable windows with external sunblinds
- Air-conditioning
- Raised floors
- Kitchenette and toilets on each floor
- Warehouse space
- Underground parking
- Wide selection of services available in BB Centrum

Rental and service charges listed without VAT. Lessee pays no commission.

