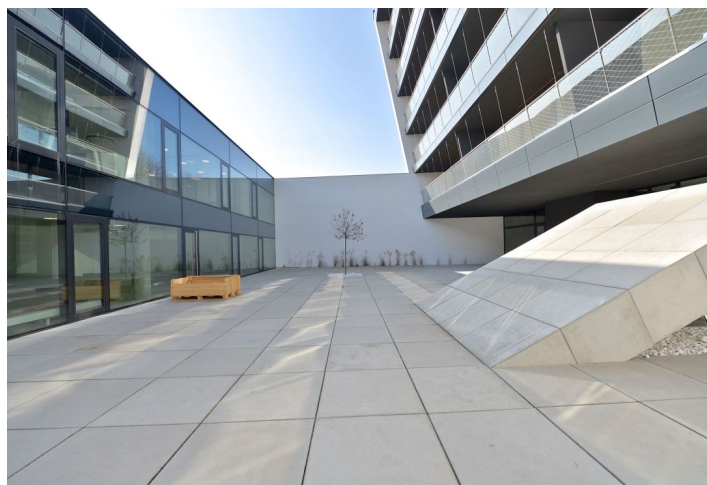
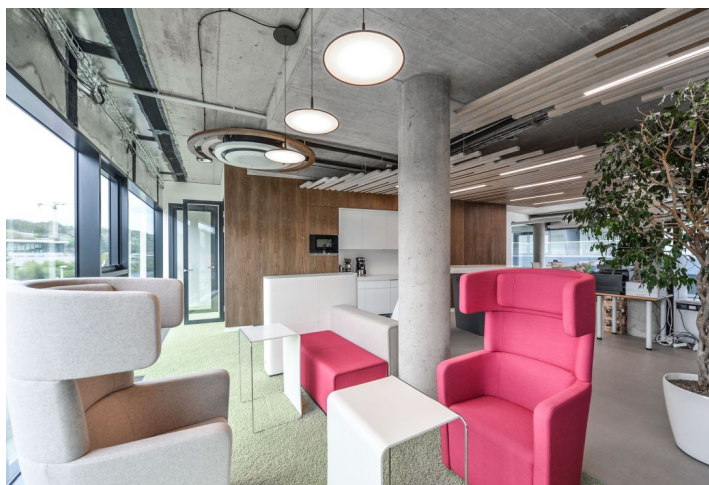




Office building

Prague 5, Radlice, Radlická

Rented



**Office building**

Prague 5, Radlice, Radlická

Rented

| | |
|-------------------------|----------------------------------|
| Service price | 3 EUR monthly per m ² |
| Total building area | 1 014 m ² |
| Tenant consumption | — |
| Parking | 130 EUR |
| Parking service charges | — |
| Parking ratio | — |
| Certification | — |
| PENB | G |
| Reference number | 24804 |

New building with unique architectural design offering high standard office space to lease in Prague 5. The building boasts an indoor atrium, which can be used as a relaxation zone.

Location:

The building is situated on a hill between Malvazinky and Radlická streets and is easily accessible by car and public transport. Within walking distance of the Radlická metro station (line B) and tram stops. Easy connection to the Prague ring road, highway D5 (direction Rozvadov), and also to the city center. Sports hall with swimming pool and tennis court, shops and restaurants are in the vicinity of the building.

Features and Services:

Shared meeting rooms equipped with furniture and quality audio and video technology
 Reception service
 Inner atrium with possibility to establish a relaxation zone
 Internet available
 Air-conditioning and heating
 Intelligent light control
 Possibility of indoor blinds
 Suspended ceilings
 Raised floors
 Kitchenette and toilets
 Parking for bikes
 Underground parking

Rental and service charges listed without VAT. Lessee pays no commission.



