



## Apartment Two-bedroom (3+kk)

Rented

71 m<sup>2</sup>, Praha 2, Vinohrady, Na Švihance





## Apartment Two-bedroom (3+kk)

Rented

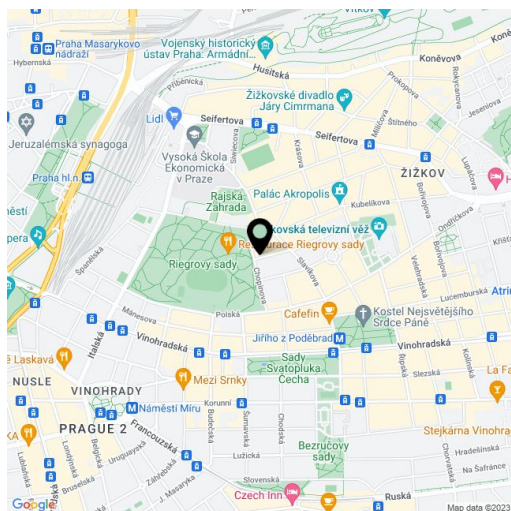
71 m<sup>2</sup>, Praha 2, Vinohrady, Na Švihance

Total area	71 m <sup>2</sup>
Parking	-
Cellar	-
PENB	G
Reference number	24815
Available from	Immediately

Benefiting from a wonderful location next to the Riegrovy sady park, this is a fully refurbished unfurnished 2-bedroom flat on the third floor of a renovated residential building with lift. Very quick access to the city center, located just a short walk from Jiřího z Poděbrad Square with metro station, rich amenities and a very popular regular produce market.

The interior includes living room with a fully fitted open kitchen, two bedrooms, bathroom with bath, sink and toilet, pantry / storage room, and entry hall.

Preserved original details, **high ceilings**, solid wood **parquet** and vinyl **floors**, tiles, security entry door, gas heating, dishwasher, camera system. Monthly deposit for common building charges, water and heating CZK 3000/month. Electricity is billed separately (transfer to the tenant). **UNFURNISHED** despite the photos.



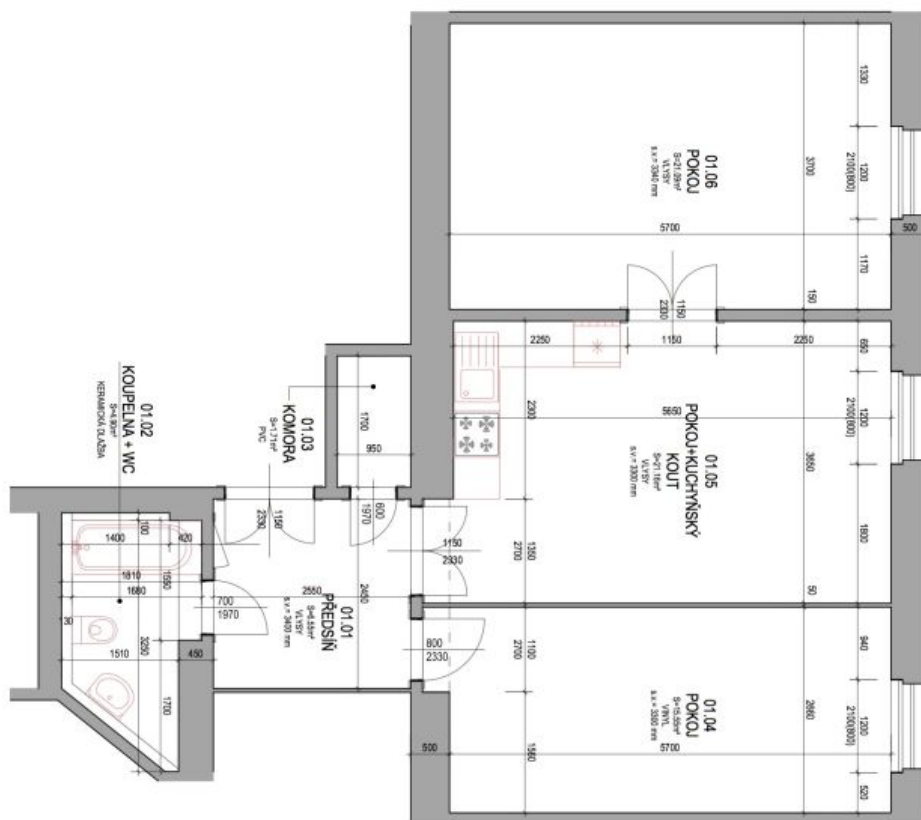
\* Area of the unit according to the Civil Code. The area consists of the sum total area of the entire unit bounded by perimeter walls.



# Apartment Two-bedroom (3+kk)

71 m<sup>2</sup>, Praha 2, Vinohrady, Na Švihance

Rented



TABULKA MÍSTNOSTI - MAVRH			
ČÍSLO	NÁZEV	PLOCHA [m <sup>2</sup> ]	PODLAHA
1.01	PŘEDSÍŇ	6,55	V.L.V.S.Y
1.02	KOUPELNA + WC	4,90	V.L.V.S.Y
1.03	KOKORNA	1,71	V.MALBA
1.04	POKOJ	16,55	V.MALBA
1.05	POKOJ + KUCHYNSKY KOUT	21,16	V.L.V.S.Y
1.06	POKOJ	21,09	V.L.V.S.Y
	CELKEM	70,95	V.MALBA