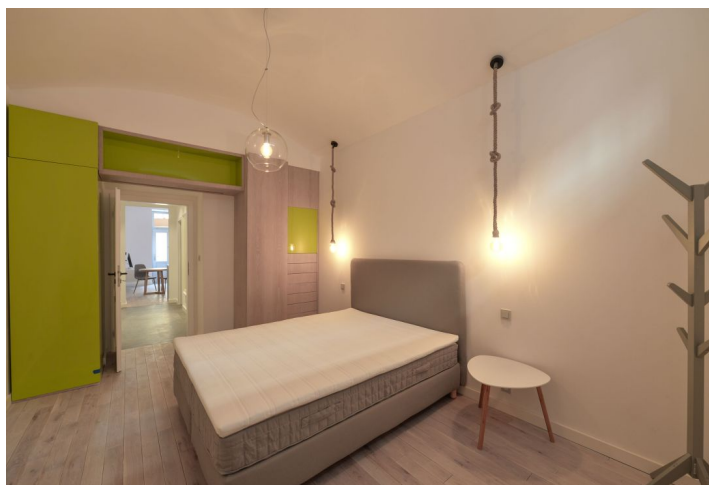
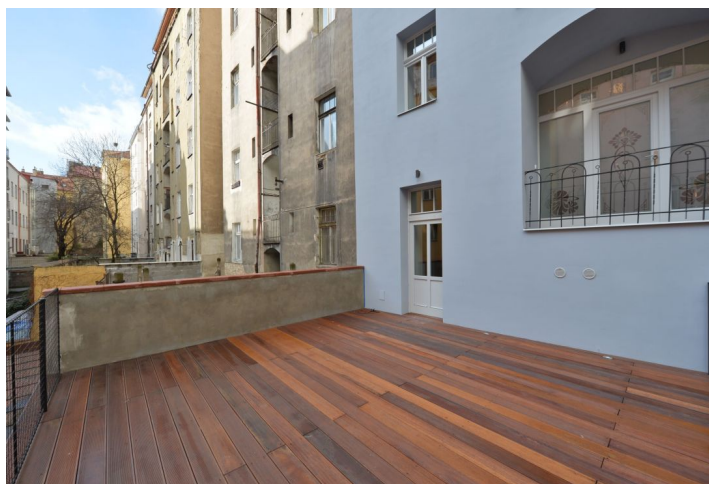




Apartment One-bedroom (2+kk)

Rented

42 m², Prague 5, Smíchov, Grafická





Apartment One-bedroom (2+kk)

Rented

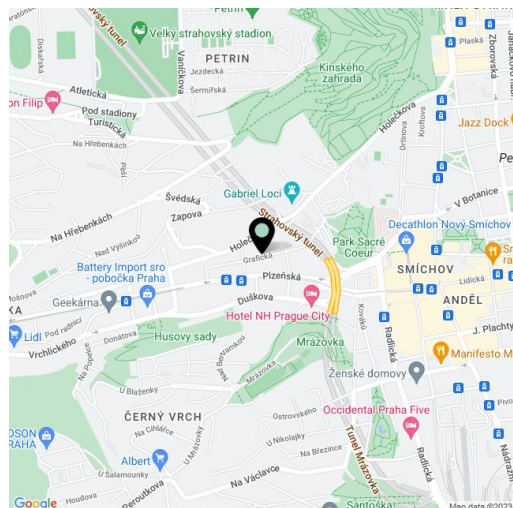
42 m², Prague 5, Smíchov, Grafická

Total area	70 m ²
Floor area*	42 m ²
Terrace	28 m ²
Parking	-
Cellar	-
PENB	C
Reference number	24838
Available from	Immediately

Boasting a 28 m² south facing terrace, this brand new fully reconstructed 1-bedroom flat furnished with design furniture is on the basement / lower ground floor of a completely newly refurbished residential building with no lift. Situated in a quiet street close to Sacre Coeur Park, one short tram stop from Nový Smíchov shopping and entertainment center and Anděl metro station with full amenities in the area. Location with very quick access to the city center, in close vicinity of the Kinského Garden and the French School.

The interior features living room with a fully fitted open kitchen and access to the terrace facing the courtyard, one bedroom, shower bathroom, a separate toilet, and entry hall.

Solid wood parquet floors, large format tiles, high vaulted ceilings, security entry door, built-in wardrobes / storage, gas heating, washer, dishwasher, TV, video entry phone. Deposit for common building charges, heating and water CZK 2100/ month for one person. Electricity is billed separately (transfer to the tenant). Interior 42 m², terrace 28 m².



* Area of the unit according to the Civil Code. The area consists of the sum total area of the entire unit bounded by perimeter walls.



Apartment One-bedroom (2+kk)

42 m², Prague 5, Smíchov, Grafická

Rented

 BYT 01	42 m ²	+ terasa 28 m ²
 BYT 02	70 m ²	+ terasa 32 m ²

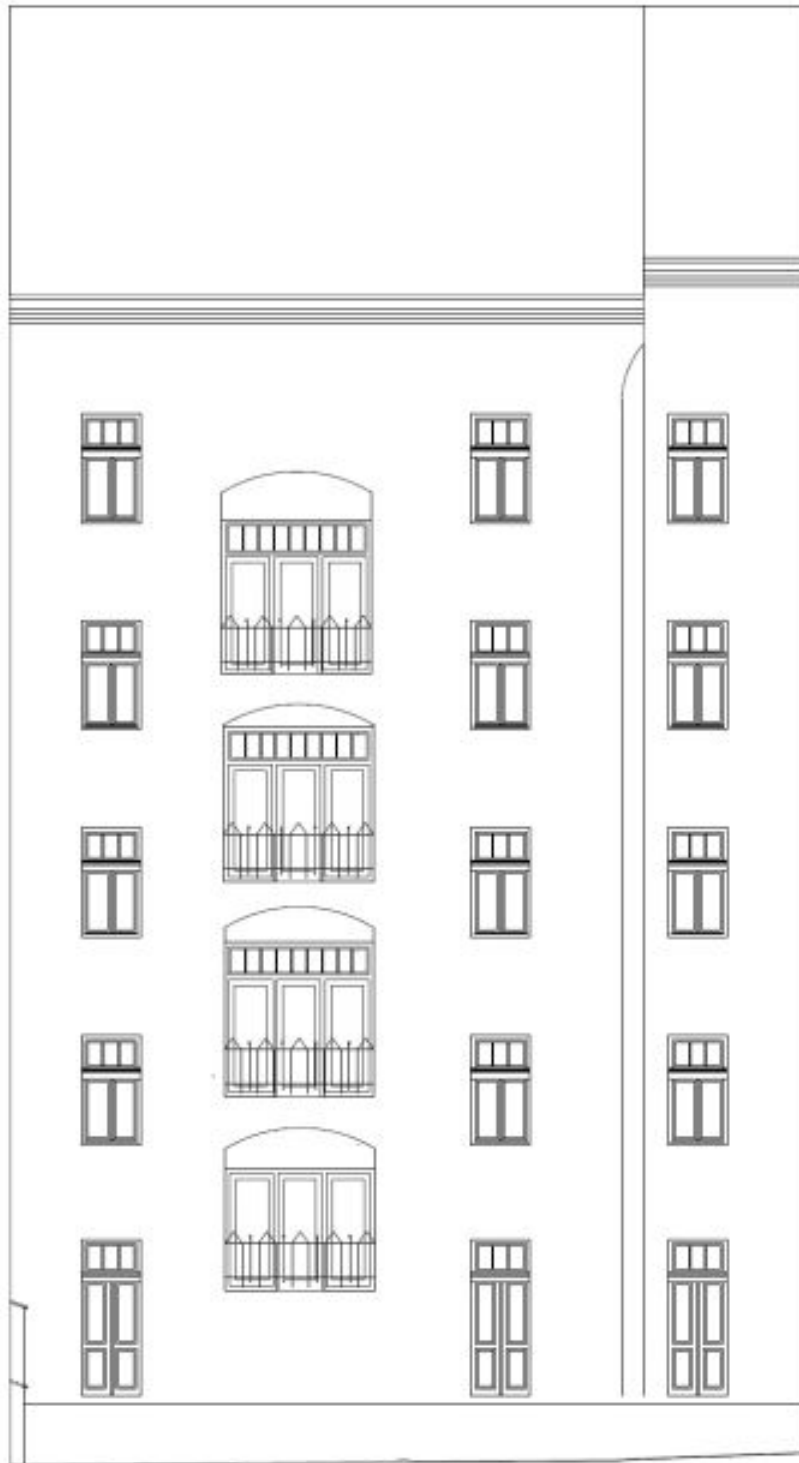




Apartment One-bedroom (2+kk)

42 m², Prague 5, Smíchov, Grafická

Rented





Apartment One-bedroom (2+kk)

42 m², Prague 5, Smíchov, Grafická

Rented

