



## Apartment One-bedroom (2+kk)

Rented

45 m<sup>2</sup>, Prague 5, Smíchov, Grafická





## Apartment One-bedroom (2+kk)

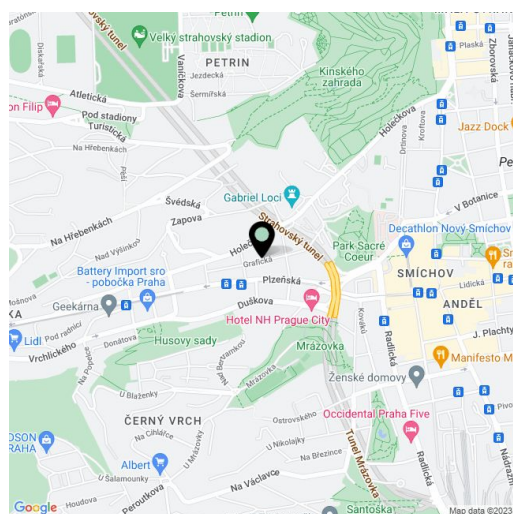
**Rented**45 m<sup>2</sup>, Prague 5, Smíchov, Grafická

Total area	45 m <sup>2</sup>
Parking	-
Cellar	-
PENB	C
Reference number	24865
Available from	Immediately

Brand new fully reconstructed 1-bedroom flat furnished with design furniture, on the ground floor of a completely newly refurbished residential building with no lift. Situated in a quiet street close to Sacre Coeur Park, one short tram stop from Nový Smíchov shopping and entertainment center and Anděl metro station with full amenities in the area. Location with very quick access to the city center, in close vicinity of the Kinského Garden and the French School.

The interior features living room with a fully fitted open kitchen, one bedroom, shower bathroom with sink and toilet, and entry hall.

Solid wood parquet floors, large format tiles, high ceilings, security entry door, built-in wardrobes / storage, gas heating, washer, dishwasher, TV, video entry phone, common balconies in the mezzanines of the building. Deposit for common building charges, heating and water CZK 2900/ month for one person. Electricity is billed separately (transfer to the tenant).



\* Area of the unit according to the Civil Code. The area consists of the sum total area of the entire unit bounded by perimeter walls.



# Apartment One-bedroom (2+kk)

Rented

45 m<sup>2</sup>, Prague 5, Smíchov, Grafická

BYT 03	45 m <sup>2</sup>
BYT 04	45 m <sup>2</sup>
BYT 05	45 m <sup>2</sup>

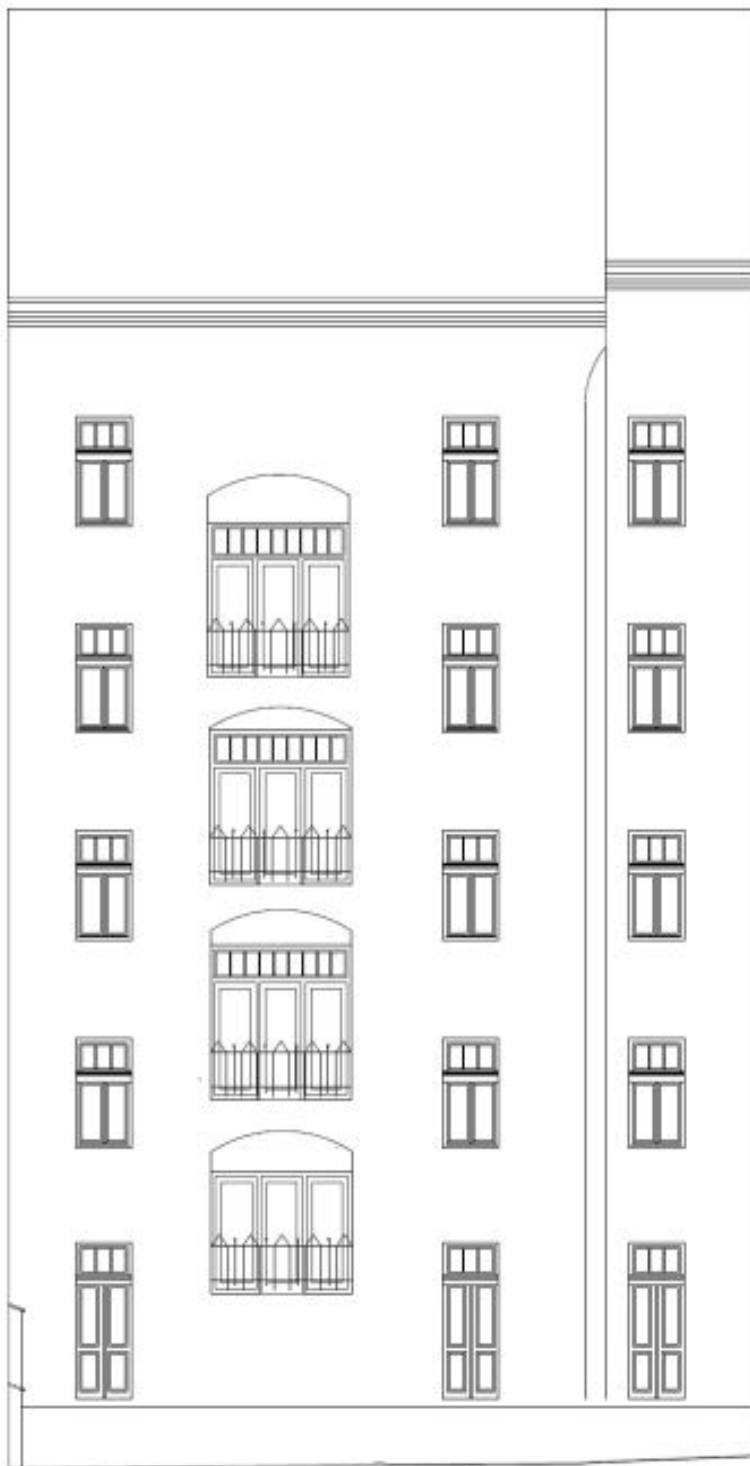




## Apartment One-bedroom (2+kk)

45 m<sup>2</sup>, Prague 5, Smíchov, Grafická

Rented





## Apartment One-bedroom (2+kk)

45 m<sup>2</sup>, Prague 5, Smíchov, Grafická

Rented

