



Apartment Two-bedroom (3+kk)

Rented

59 m², Prague 5, Smíchov, Grafická





Apartment Two-bedroom (3+kk)

Rented

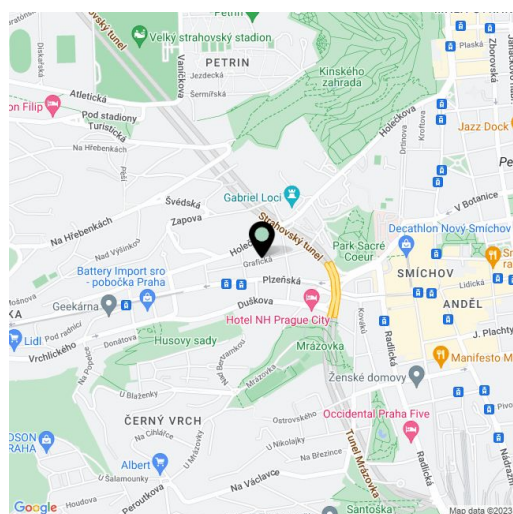
59 m², Prague 5, Smíchov, Grafická

Total area	59 m ²
Parking	-
Cellar	-
PENB	C
Reference number	24867
Available from	Immediately

Fully reconstructed 2-bedroom flat furnished with design furniture, on the first floor of a completely newly refurbished residential building with no lift. Situated on a quiet street close to Sacre Coeur park, one short tram stop from the Nový Smíchov shopping and entertainment center and Anděl metro station, with full amenities in the area. Location with very quick access to the city center, in close vicinity of the Kinského Garden and the French School.

The interior features a living room with a fully fitted open kitchen and dining area, two bedrooms, shower bathroom, a separate toilet, and entry hall.

Solid wood parquet floors, large format tiles, high ceilings, security entry door, built-in wardrobes / storage, gas heating, washer, dishwasher, TV, video entry phone, common balconies in the mezzanine of the building. Deposit for common building charges, heating and water CZK 3600/ month for two persons. Electricity is billed separately (transfer to the tenant).



* Area of the unit according to the Civil Code. The area consists of the sum total area of the entire unit bounded by perimeter walls.

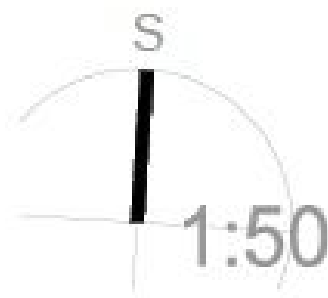


Apartment Two-bedroom (3+kk)

Rented

59 m², Prague 5, Smíchov, Grafická

	BYT 06	59	m ²
	BYT 07	44	m ²
	BYT 08	45	m ²

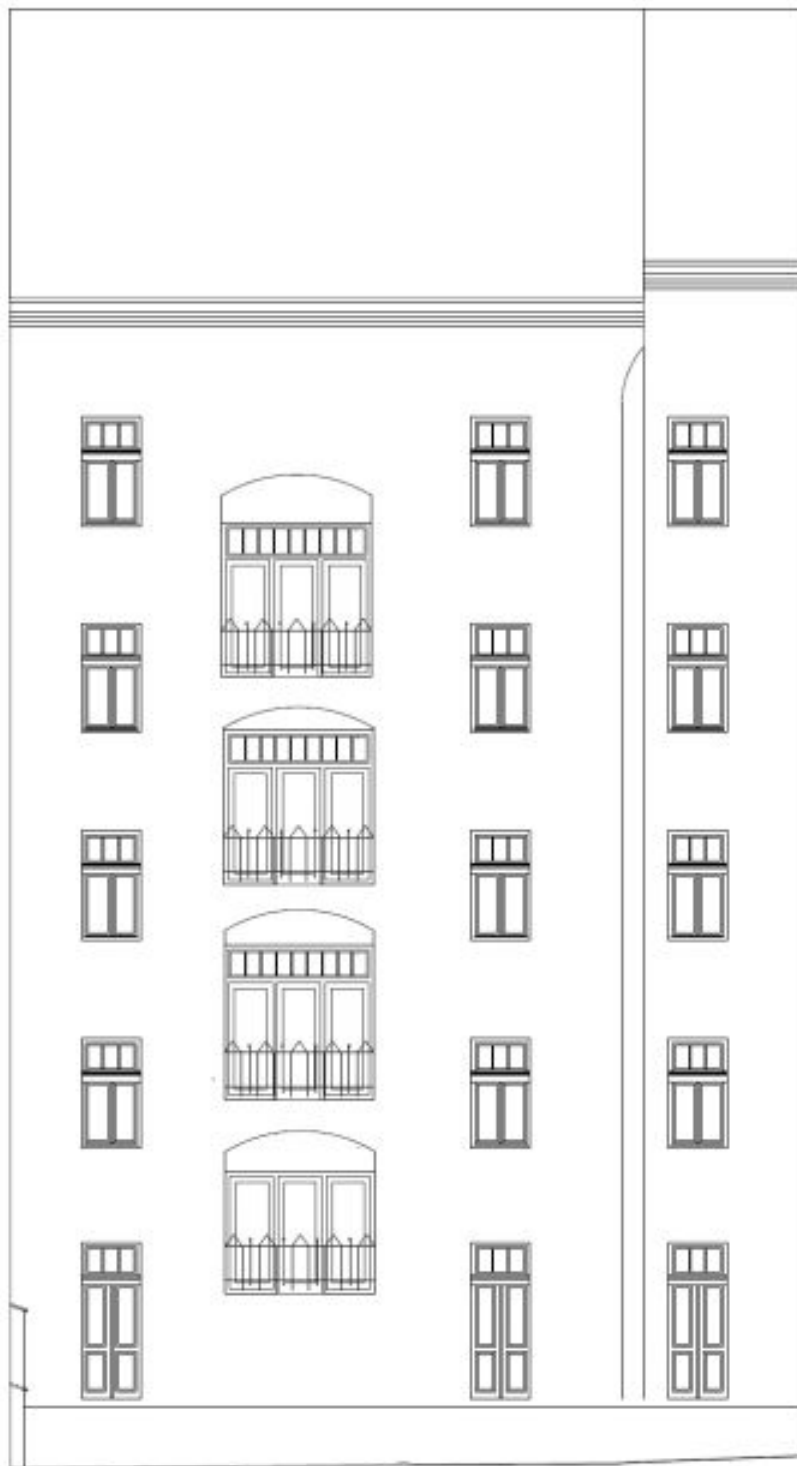




Apartment Two-bedroom (3+kk)

59 m², Prague 5, Smíchov, Grafická

Rented





Apartment Two-bedroom (3+kk)

59 m², Prague 5, Smíchov, Grafická

Rented

