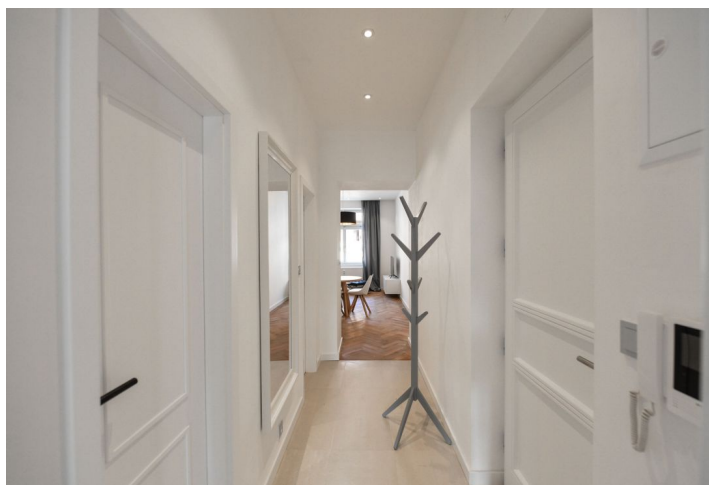




Apartment Two-bedroom (3+kk)

Rented

59 m², Praha 5, Smíchov, Grafická





Apartment Two-bedroom (3+kk)

Rented

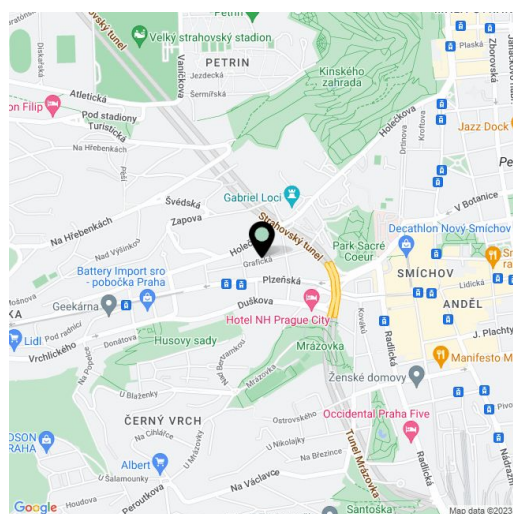
59 m², Praha 5, Smíchov, Grafická

Total area	59 m ²
Parking	-
Cellar	-
PENB	C
Reference number	24869
Available from	Immediately

Fully reconstructed unfurnished 2-bedroom flat on the third floor of a completely newly refurbished residential building with no lift. Situated in a quiet street close to Sacre Coeur Park, one short tram stop from Nový Smíchov shopping and entertainment center and Anděl metro station with full amenities in the area. Location with very quick access to the city center, in close vicinity of the Kinského Garden and the French School.

The bright interior features living room with a fully fitted open kitchen and dining area, two bedrooms, shower bathroom, a separate toilet, and entry hall.

High standard equipment and finishes, solid wood parquet floors, large format tiles, high ceilings, security entry door, built-in wardrobes / storage, gas heating, washer, dishwasher, TV, video entry phone, common balconies in the mezzanines of the building. Deposit for common building charges, heating and water CZK 3000/ month for one person, CZK 3400 for two persons. Electricity is billed separately (transfer to the tenant).



* Area of the unit according to the Civil Code. The area consists of the sum total area of the entire unit bounded by perimeter walls.



Apartment Two-bedroom (3+kk)

Rented

59 m², Praha 5, Smíchov, Grafická

BYT 12	59 m ²
BYT 13	45 m ²
BYT 14	45 m ²

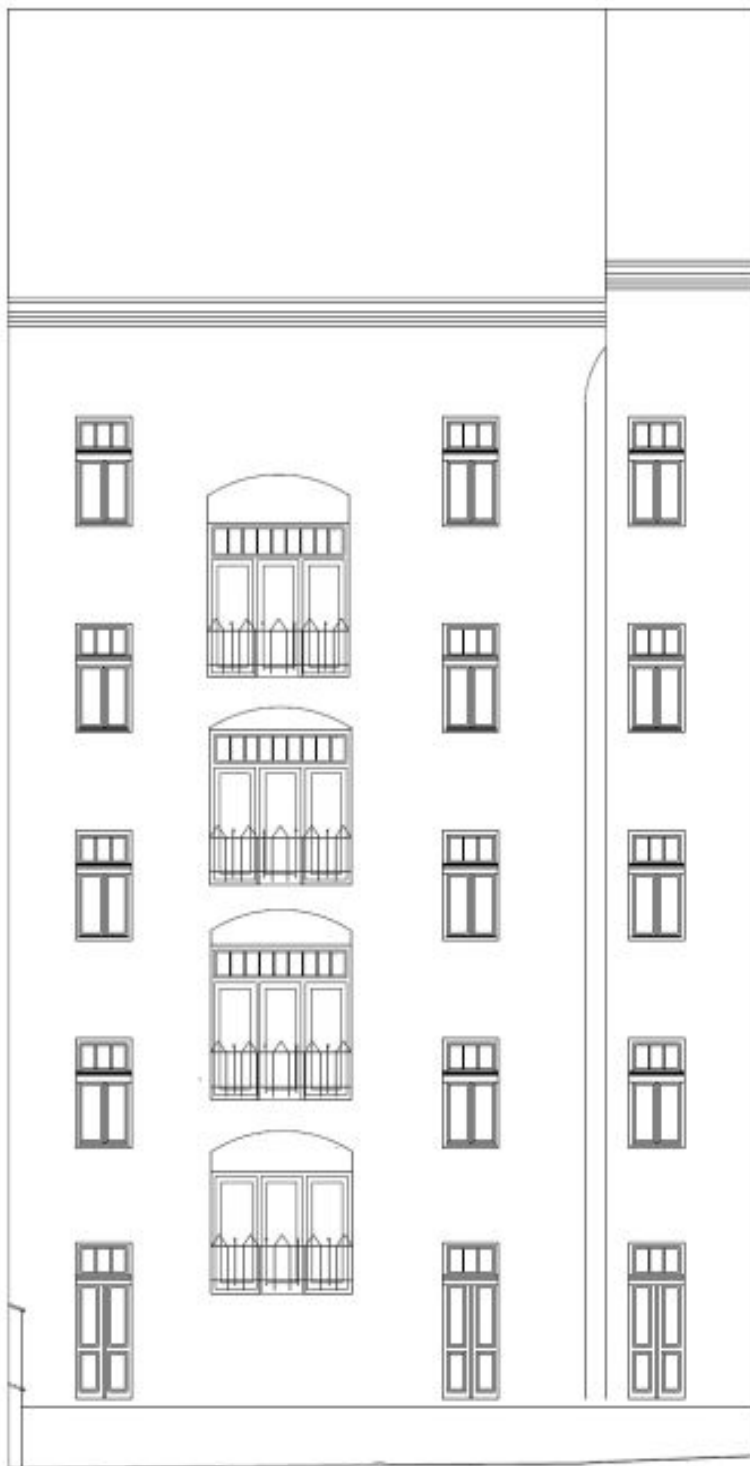




Apartment Two-bedroom (3+kk)

59 m², Praha 5, Smíchov, Grafická

Rented





Apartment Two-bedroom (3+kk)

59 m², Praha 5, Smíchov, Grafická

Rented

