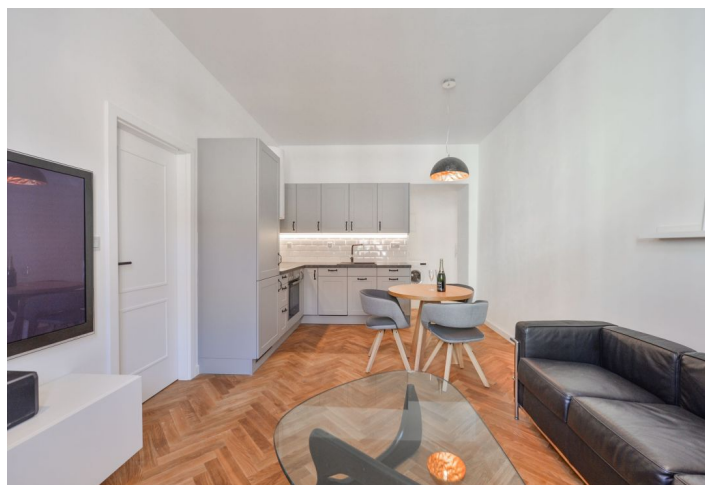
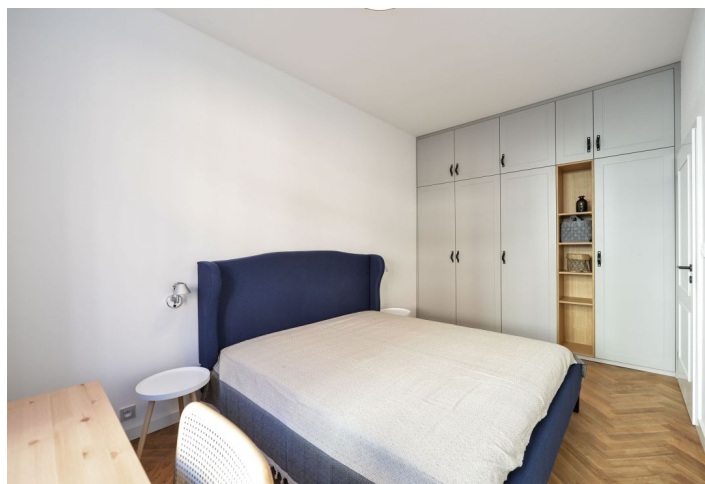




## Apartment One-bedroom (2+kk)

Rented

45 m<sup>2</sup>, Praha 5, Smíchov, Grafická





## Apartment One-bedroom (2+kk)

Rented

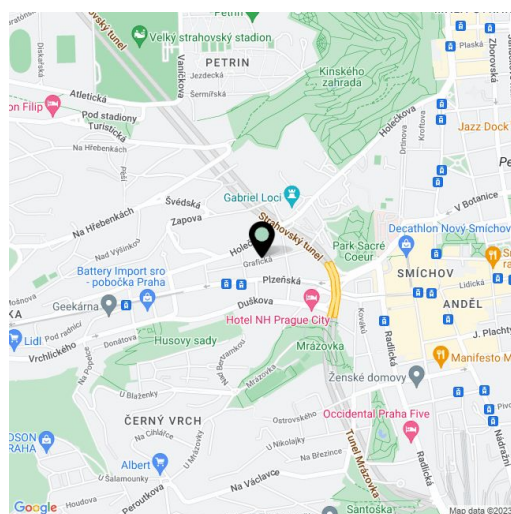
45 m<sup>2</sup>, Praha 5, Smíchov, Grafická

|                  |                   |
|------------------|-------------------|
| Total area       | 45 m <sup>2</sup> |
| Parking          | -                 |
| Cellar           | -                 |
| PENB             | C                 |
| Reference number | 24872             |
| Available from   | Immediately       |

Fully reconstructed 1-bedroom flat furnished with design furniture, on the third floor of a completely newly refurbished residential building with no lift. Situated in a quiet street close to Sacre Coeur Park, one short tram stop from Nový Smíchov shopping and entertainment center and Anděl metro station with full amenities in the area. Location with very quick access to the city center, in close vicinity of the Kinského Garden and the French School.

The bright interior features living room with a fully fitted open kitchen, one bedroom, shower bathroom with sink and toilet, and entry hall.

Solid wood parquet floors, large format tiles, high ceilings, security entry door, built-in wardrobes / storage, gas heating, washer, dishwasher, TV, video entry phone, common balconies in the mezzanines of the building. Deposit for common building charges, heating and water CZK 3000/ month for one person, CZK 3400/month for two persons. Electricity is billed separately (transfer to the tenant).



\* Area of the unit according to the Civil Code. The area consists of the sum total area of the entire unit bounded by perimeter walls.