



## Apartment One-bedroom (2+kk)

Rented

46 m<sup>2</sup>, Prague 5, Smíchov, Grafická





## Apartment One-bedroom (2+kk)

Rented

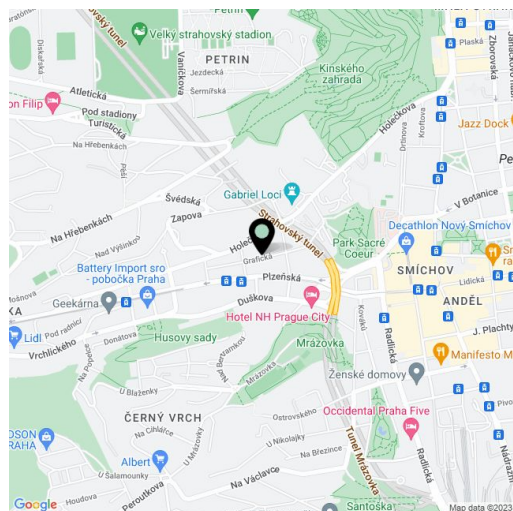
46 m<sup>2</sup>, Prague 5, Smíchov, Grafická

Total area	46 m <sup>2</sup>
Parking	-
Cellar	-
PENB	C
Reference number	24874
Available from	Immediately

Fully reconstructed 1-bedroom flat complete with design furniture, on the second floor of a completely refurbished residential building with no lift. Situated in a quiet street close to Sacre Coeur Park, one short tram stop from Nový Smíchov shopping and entertainment center and Anděl metro station with full amenities in the area. Location with very quick access to the city center, in close vicinity of the Kinského Garden and the French School.

The interior features living room with a fully fitted open kitchen, one bedroom, bathroom with bathtub and toilet, utility room, and entry hall. South oriented towards the quiet courtyard.

Solid wood parquet floors, large format tiles, high ceilings, security entry door, built-in wardrobes / storage, gas heating, washer, dishwasher, TV, video entry phone, common balconies in the mezzanines of the building. Deposit for common building charges, heating and water CZK 3000/ month for one person, CZK 3400/month for 2 persons. Electricity is billed separately (transfer to the tenant). Available from January 2020.



\* Area of the unit according to the Civil Code. The area consists of the sum total area of the entire unit bounded by perimeter walls.



# Apartment One-bedroom (2+kk)

Rented

46 m<sup>2</sup>, Prague 5, Smíchov, Grafická

BYT 09	59 m <sup>2</sup>
BYT 10	45 m <sup>2</sup>
BYT 11	46 m <sup>2</sup>

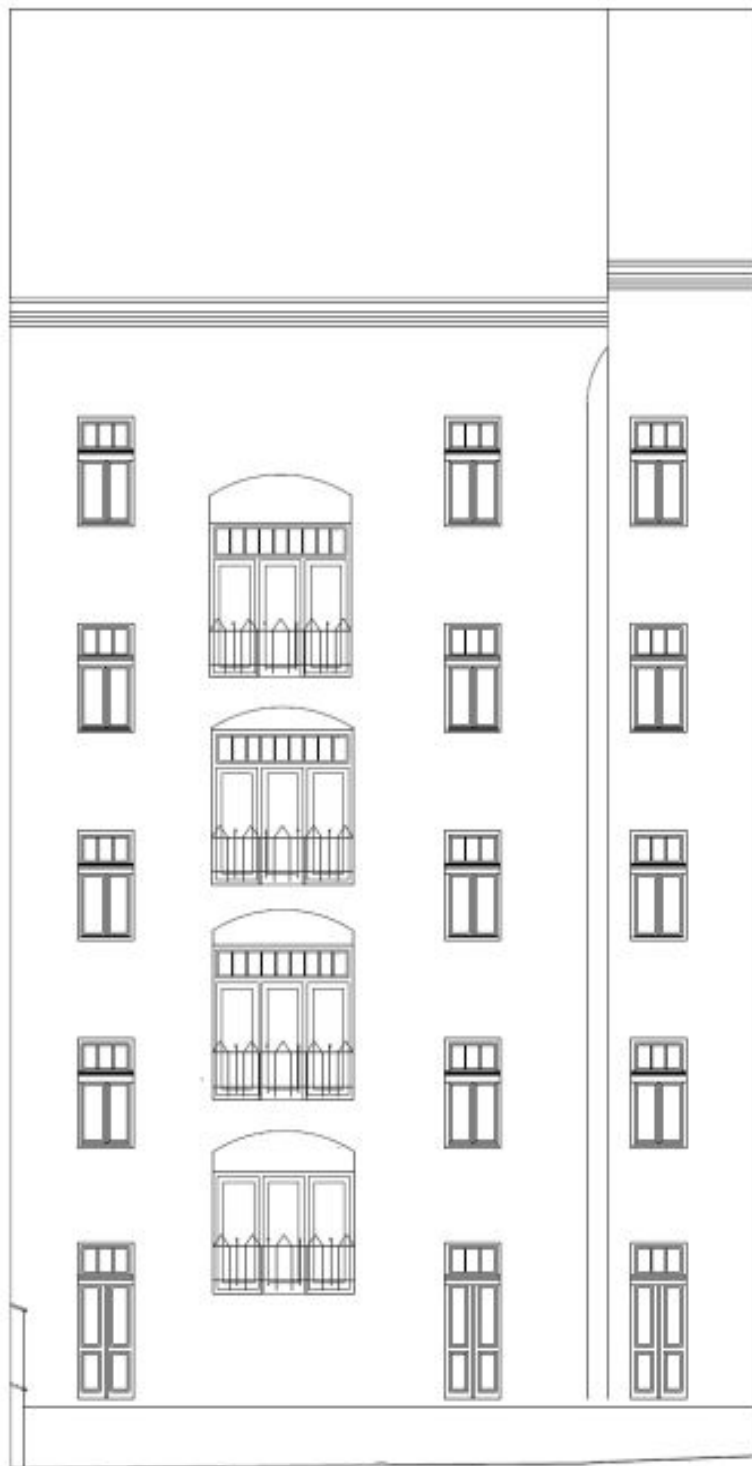




## Apartment One-bedroom (2+kk)

46 m<sup>2</sup>, Prague 5, Smíchov, Grafická

Rented





## Apartment One-bedroom (2+kk)

46 m<sup>2</sup>, Prague 5, Smíchov, Grafická

Rented

