



## Apartment One-bedroom (2+kk)

Rented

45 m<sup>2</sup>, Praha 5, Smíchov, Grafická





## Apartment One-bedroom (2+kk)

Rented

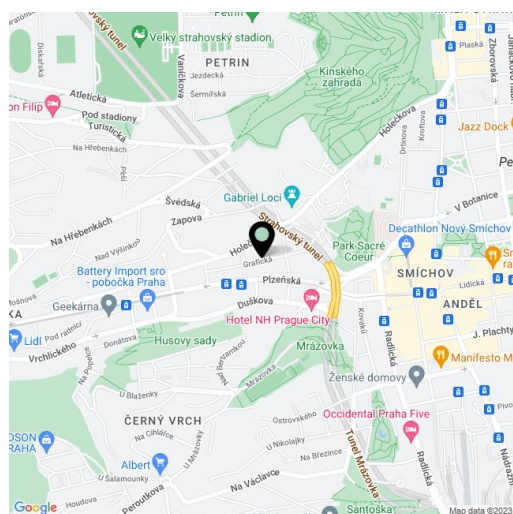
45 m<sup>2</sup>, Praha 5, Smíchov, Grafická

Total area	45 m <sup>2</sup>
Parking	-
Cellar	-
PENB	C
Reference number	24875
Available from	Immediately

Fully renovated 1-bedroom flat furnished with design furniture, on the third floor of a completely newly refurbished residential building without a lift. Situated on a quiet street close to the Sacre Coeur park, one short tram stop from the Nový Smíchov shopping and entertainment center and Anděl metro station with full amenities in the area. Location with very quick access to the city center, in the vicinity of the Kinského Garden and the French School.

The sunny interior features a living room with a fully fitted open kitchen, one bedroom, bathroom with bathtub and toilet, utility room, and entry hall. South-oriented, facing a quiet courtyard.

Solid wood parquet floors, large format tiles, high ceilings, security entry door, built-in wardrobes / storage, gas heating, washer, dishwasher, TV, video entry phone, common balconies in the mezzanines of the building. Deposit for common building charges, heating and water CZK 3000/month for one person, CZK 3400 for two persons. Electricity is billed separately (transfer to the tenant).



\* Area of the unit according to the Civil Code. The area consists of the sum total area of the entire unit bounded by perimeter walls.



# Apartment One-bedroom (2+kk)

Rented

45 m<sup>2</sup>, Praha 5, Smíchov, Grafická

BYT 12	59 m <sup>2</sup>
BYT 13	45 m <sup>2</sup>
BYT 14	45 m <sup>2</sup>

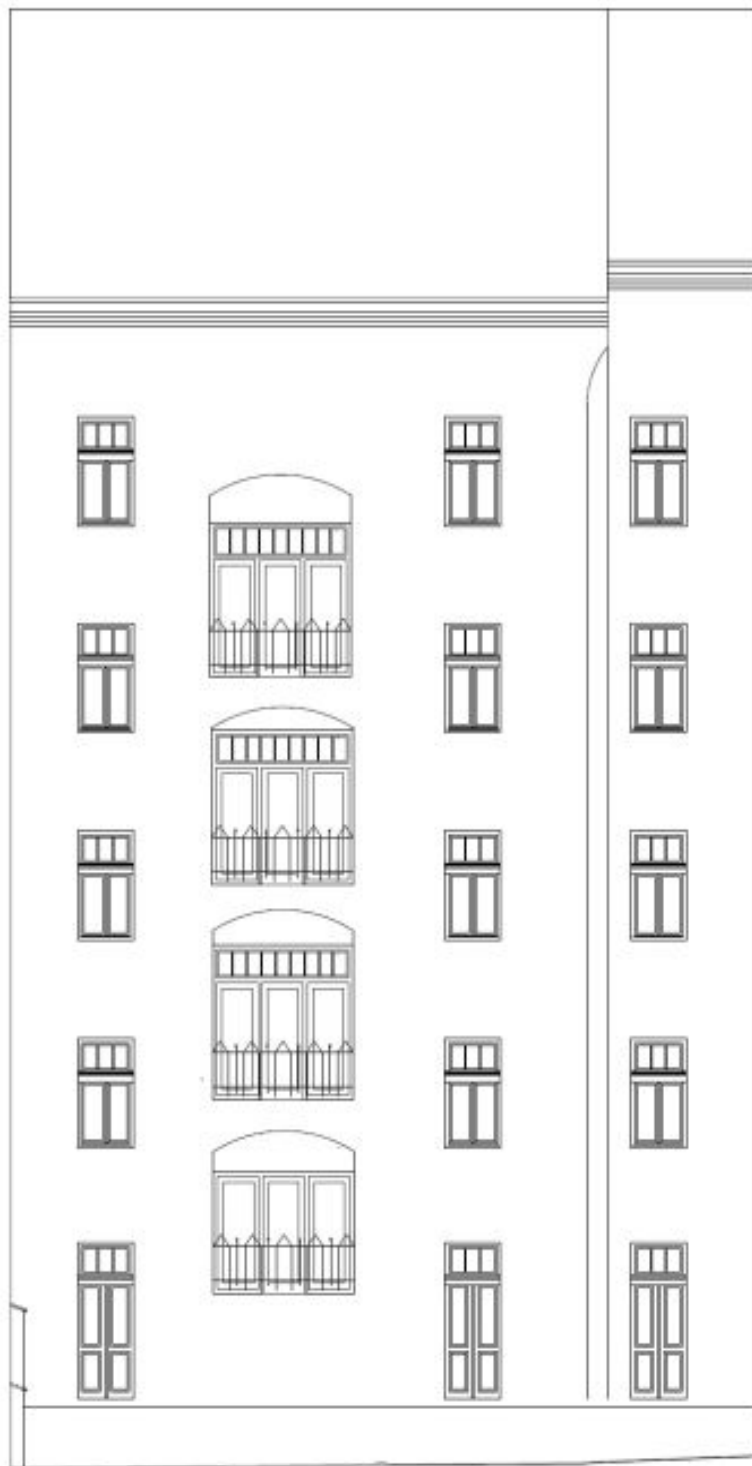




## Apartment One-bedroom (2+kk)

45 m<sup>2</sup>, Praha 5, Smíchov, Grafická

Rented





## Apartment One-bedroom (2+kk)

45 m<sup>2</sup>, Praha 5, Smíchov, Grafická

Rented

