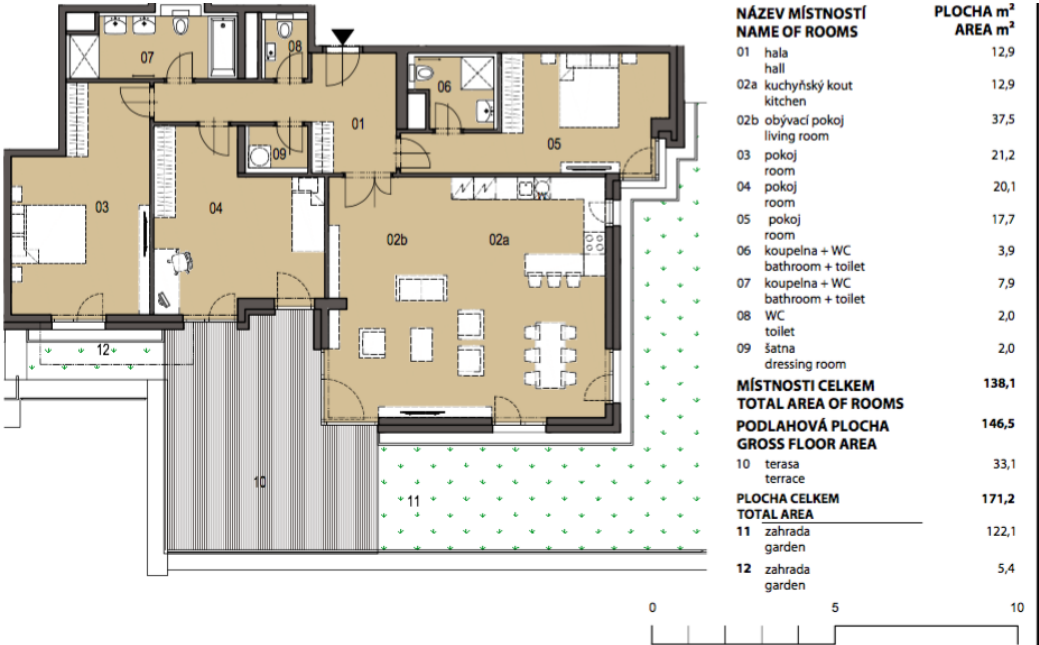




Apartment Three-bedroom (4+kk)

138 m², Prague 7, Holešovice

€ 560 277 | CZK 13 844 450



Upozornění: Plochy jednotlivých místností jsou pouze orientační. Vyobrazené zařízení v plánech bytů (nábytek, kuch. linka, el. spotřebiče atd.) není součástí dodávky. Rozsah



Apartment Three-bedroom (4+kk)

€ 560 277 | CZK 13 844 450

138 m², Prague 7, Holešovice

Total area	171 m²
Floor area*	138 m²
Terrace	33 m²
Garden	128 m²
Parking	2 Garage parking space
Garage	Yes
Cellar	Yes
PENB	B
Reference number	24962

* Area of the unit according to the Civil Code. The area consists of the sum total area of the entire unit bounded by perimeter walls.

This attractive 3-bedroom apartment with terrace and views of the river lined with mature trees, is part of a newly emerging residential project in a dynamically developing area of Holešovice, Prague 7. Quality-equipped, modern apartments with an ideal orientation to the east and west will offer comfortable living near the city center, with excellent transport accessibility and a wide selection of cultural, social and sports activities. Completion is scheduled for spring 2018.

The layout of this apartment on the ground floor includes a living room with preparation for the kitchen, dining area and access to the terrace, master bedroom with en-suite bathroom (shower, toilet), 2 children's bedrooms, shared bathroom with bathtub, shower and toilet, separate toilet, utility room and hallway.

High-standard equipment will include **triple-layer Magnum oak floors**, Technoart or Impronta large format tiles, **Hanák interior doors with concealed hinges and magnetic locks**, windows with triple glass and outdoor electrically controlled blinds, Hansgrohe, Laufen, Hüppe and Riho bathroom sanitary ware and fittings, preparation for air-conditioning and smart home system. **A cellar and two parking spaces in a guarded underground garage are included in the purchase price.**

The complex will also offer a private landscaped park, fitness facilities with river views and representative social premises suitable for celebrations, BBQs and other events. The high level of security will be complete with a guarded central entrance to the building, concierge service, 24/7 security and CCTV system.

In the vicinity of the project you can find full services and amenities - kindergartens, schools, several cafes and restaurants, shops, a fitness center, golf course and other opportunities for relaxation and for active recreation. 3-minute walk away from a tram stop providing direct connections to the nearby Vltavská and Palmovka metro stations, and to the center.

The project includes 1 to 6-bedroom units on various floors. For more information and a list of units available, please contact our office.

The purchase price includes VAT therefore it is not subject to the property transfer tax.

Interior 138.1 m², terrace 33.1 m² and garden 127.5 m².