



Land

1 211 m², Praha-západ, Vrané nad Vltavou

Sold





Land

1 211 m², Praha-západ, Vrané nad Vltavou

Sold

Price per sq. m.	4 046 CZK
Total area	1 211 m ²
Land type	Housing
Reference number	24991

Sale of a building plot with a total area of 1 211 m², in a very quiet and nice area of Vrané nad Vltavou. The land is located just a few steps from the forest, on a gentle slope lined with mature trees and bushes, and enjoys lovely views of the lush greenery.

The plot features complete utilities, fencing on three sides, and access by a driveway. There is an opportunity to buy the project designed by architect Ivan Kroupa (currently under preparation) to construct a house with a roof terrace, balcony and double garage. The architectural quality of the two neighboring houses realized by the same person is another benefit worth mentioning.

This is a popular residential and recreational area, with accessibility to Prague within 16 minutes (outside of rush hour). The property is located less than 5 minutes from the train station, nearby you can find a primary school, kindergarten, playground and BMX park.

Land 1 211 m².

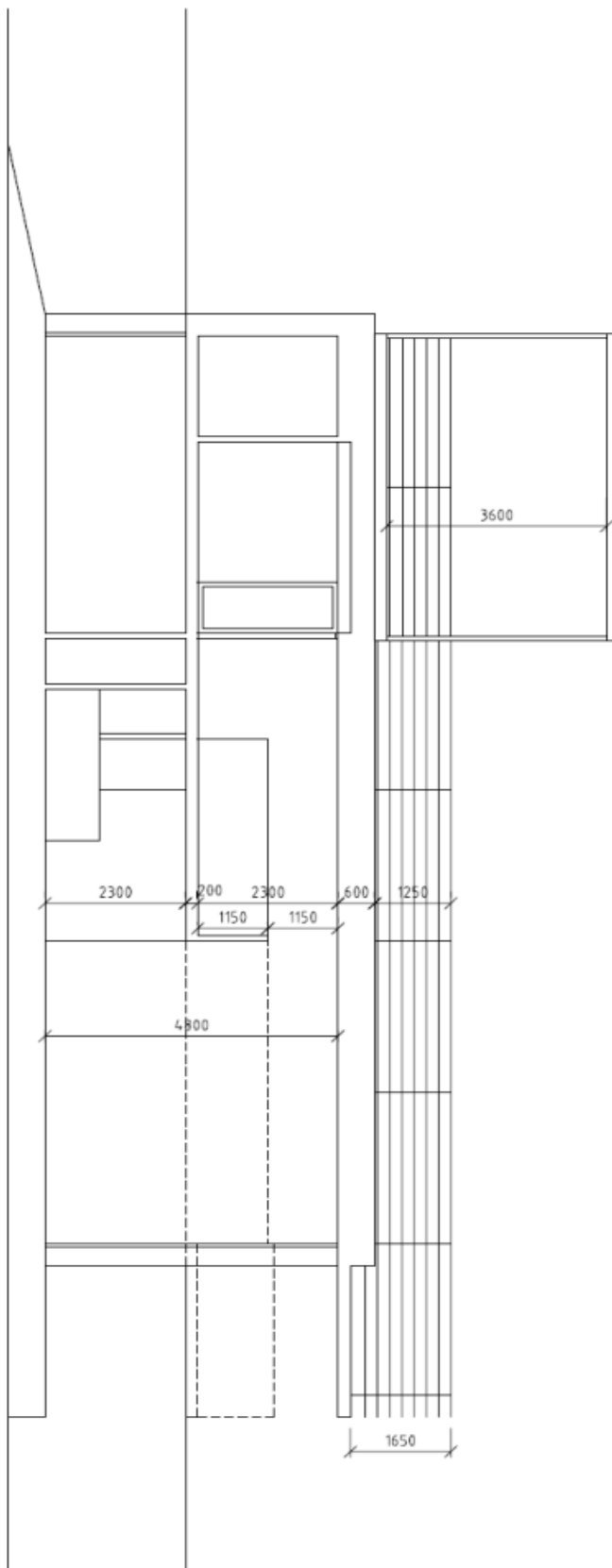


Land

1 211 m², Praha-západ, Vrané nad Vltavou

Sold

Atelier Mařín, Vrané nad Vltavou, Ivan Kroupa architekti, Řez podélný 1:100, 26.2.2003

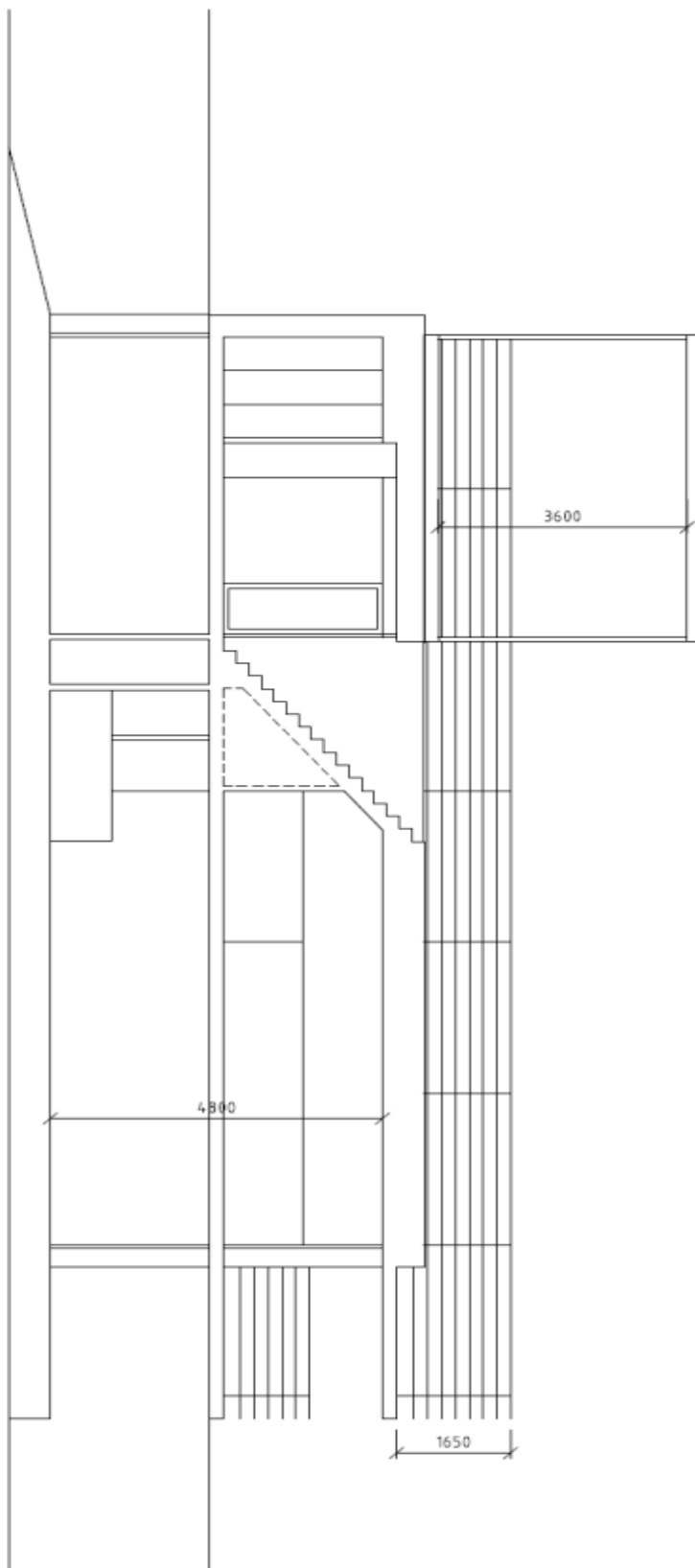




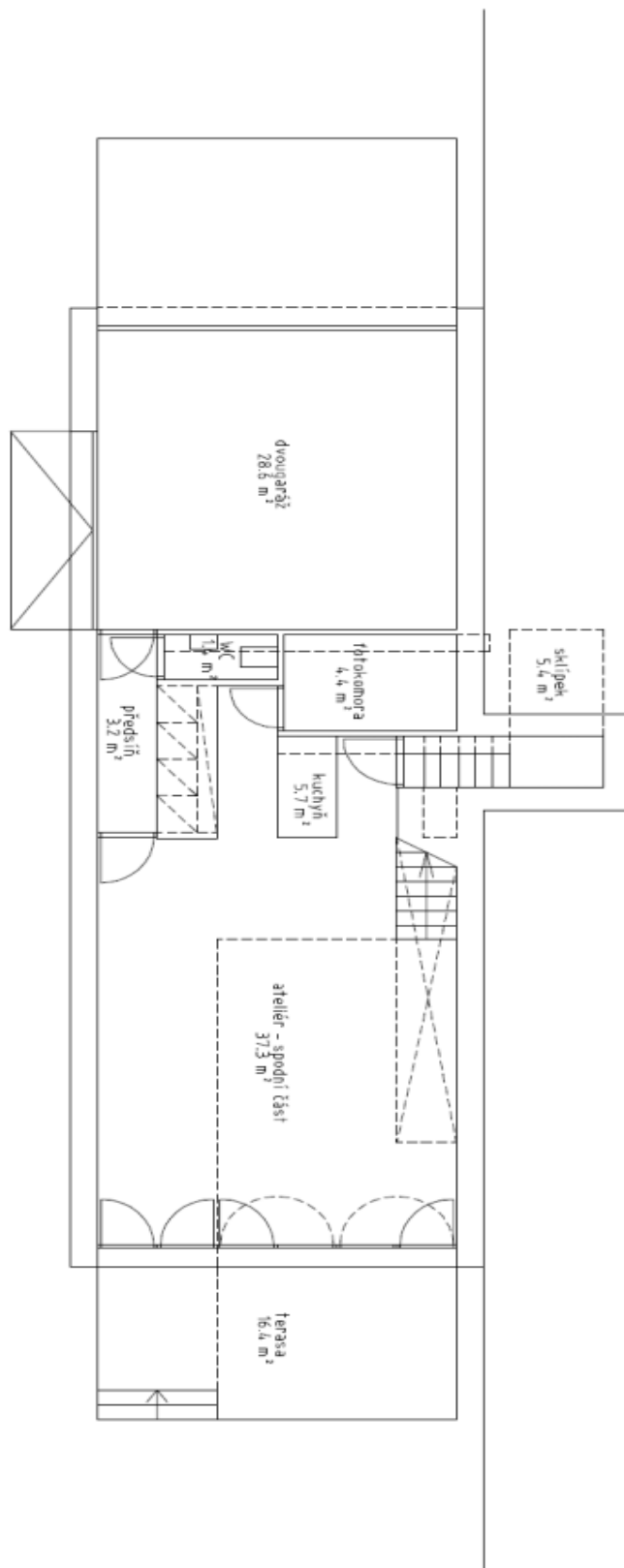
Land

1211 m², Praha-západ, Vrané nad Vltavou

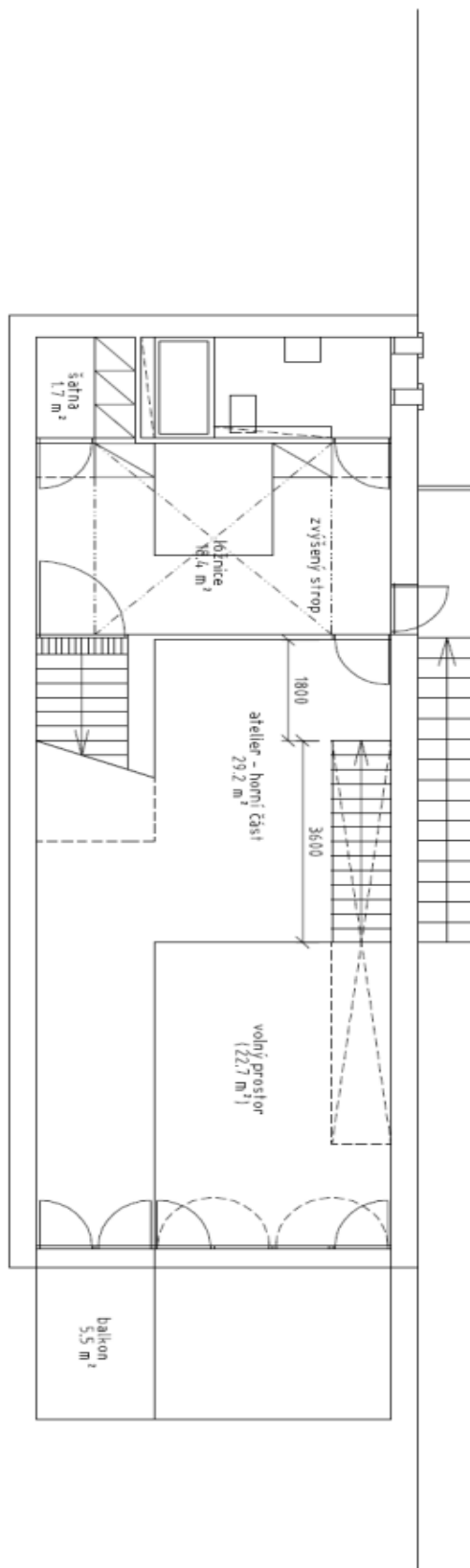
Sold



Atelier Mašín, Vrané nad Vltavou, Ivan Kroupa architekti, Fez podláhý B 1:100, 26.2.2003



Ateliér Mašín, Vrané nad Vltavou, Ivan Kroupa architekti, půdorys 1.N.P., 26.2.2003



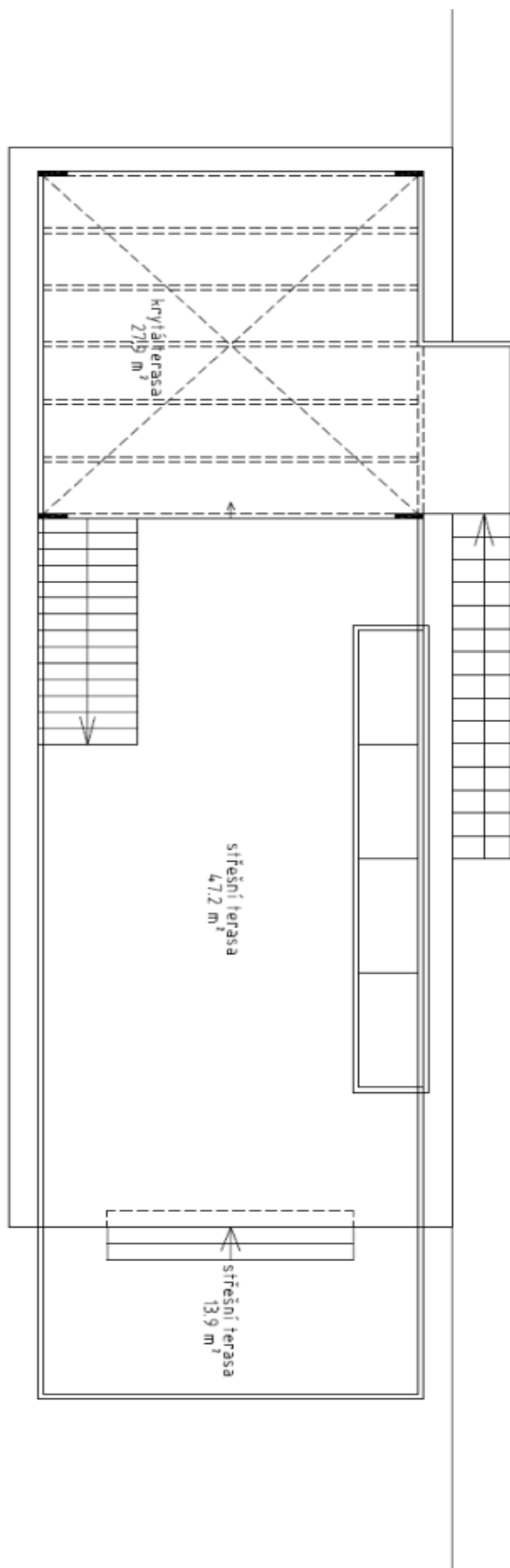
Atelier Měřín, Vrané nad Vltavou, Ivan Kroupa architekti, půdorys ZAP, 26.2.2003



Land

1211 m², Praha-západ, Vrané nad Vltavou

Sold



Ateliér Mašín, Vrané nad Vltavou, Ivan Kroupa architekti, půdorys střechy, 26.2.2003